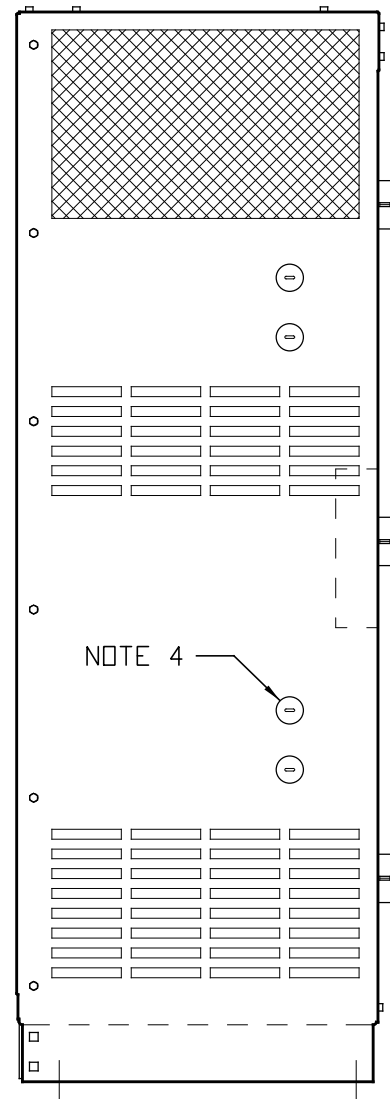
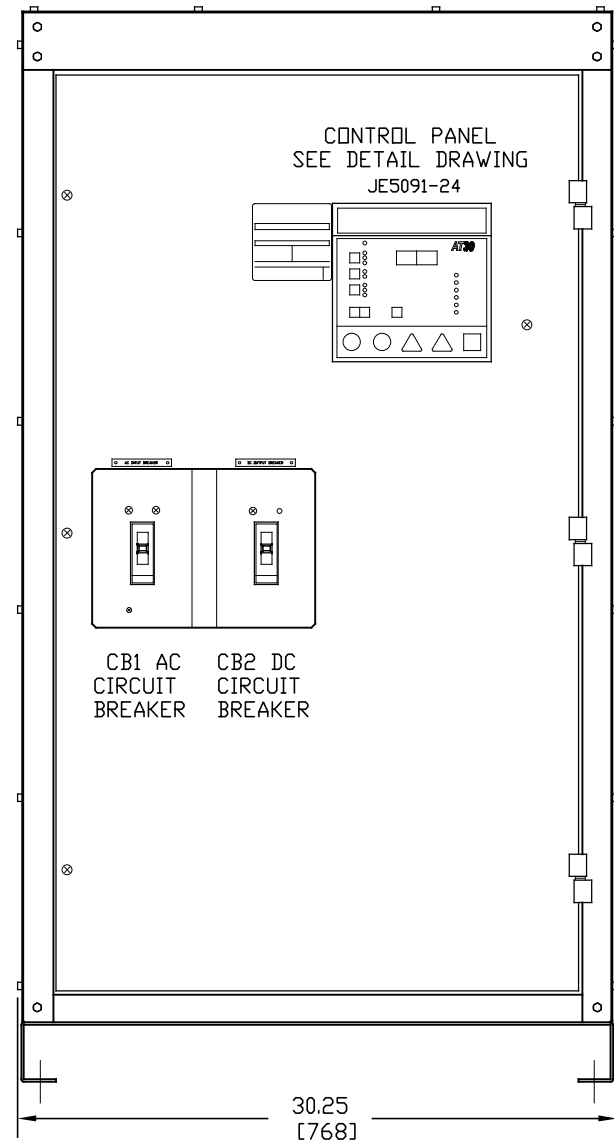


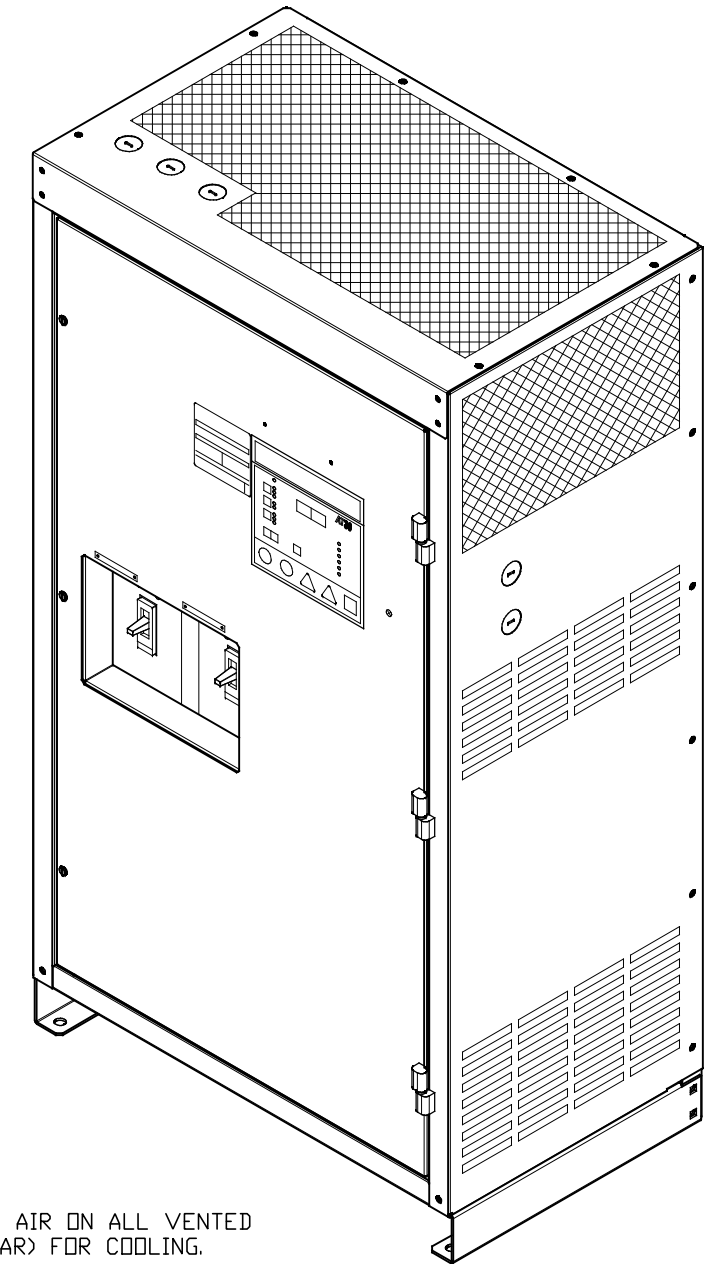
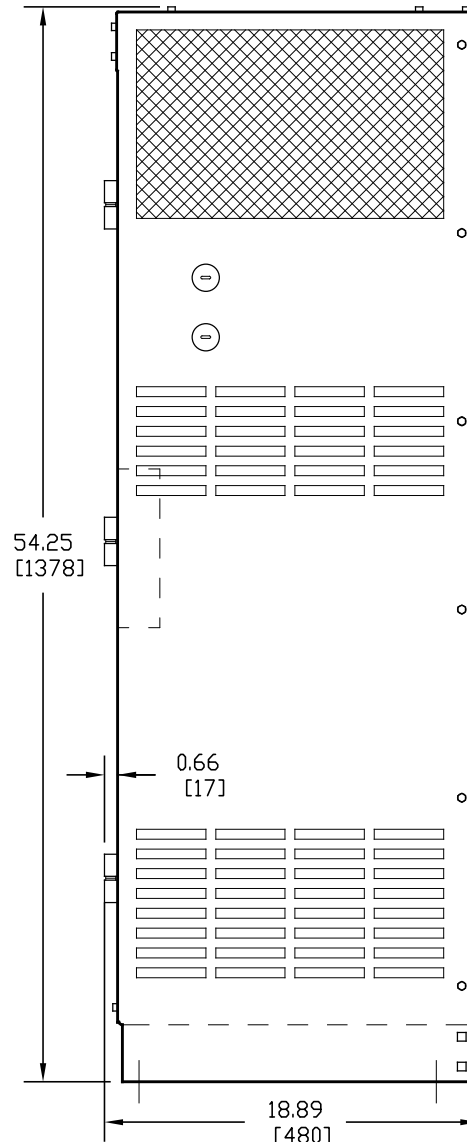
SIDE VIEW



FRONT VIEW

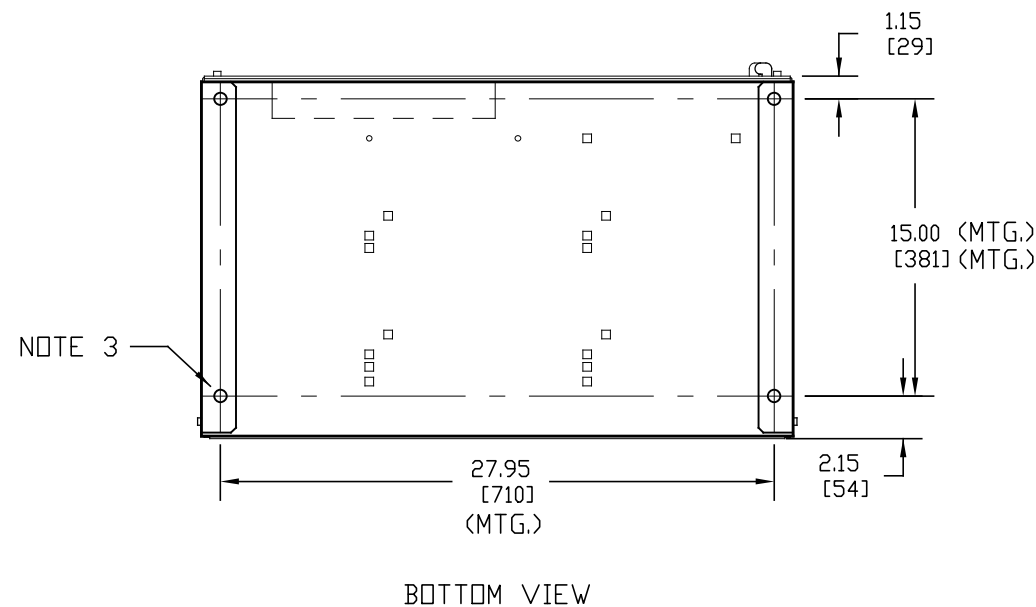


SIDE VIEW



NOTES:

- 2) ALLOW 6in / 152mm OF FREE AIR ON ALL VENTED SURFACES (TOP, SIDES & REAR) FOR COOLING.
- 3) FOUR (4) 0.625in / 16mm FLOOR-MOUNTING HOLES ARE PROVIDED ON BOTTOM OF ENCLOSURE AS SHOWN.
- 4) NINE (9) 1.31in / 33mm DIA STANDARD PRE-FAB KEY-SLOT KNOCKOUTS ARE PROVIDED AS SHOWN FOR 1in / 25mm CONDUIT ENTRY. IF ADDITIONAL CONDUIT ENTRANCES ARE REQUIRED, ENCLOSURE SHOULD BE FIELD-MODIFIED BY INSTALLER.
- 5) BATTERY CHARGER SHIPPING WEIGHT: SEE PRODUCT LITERATURE



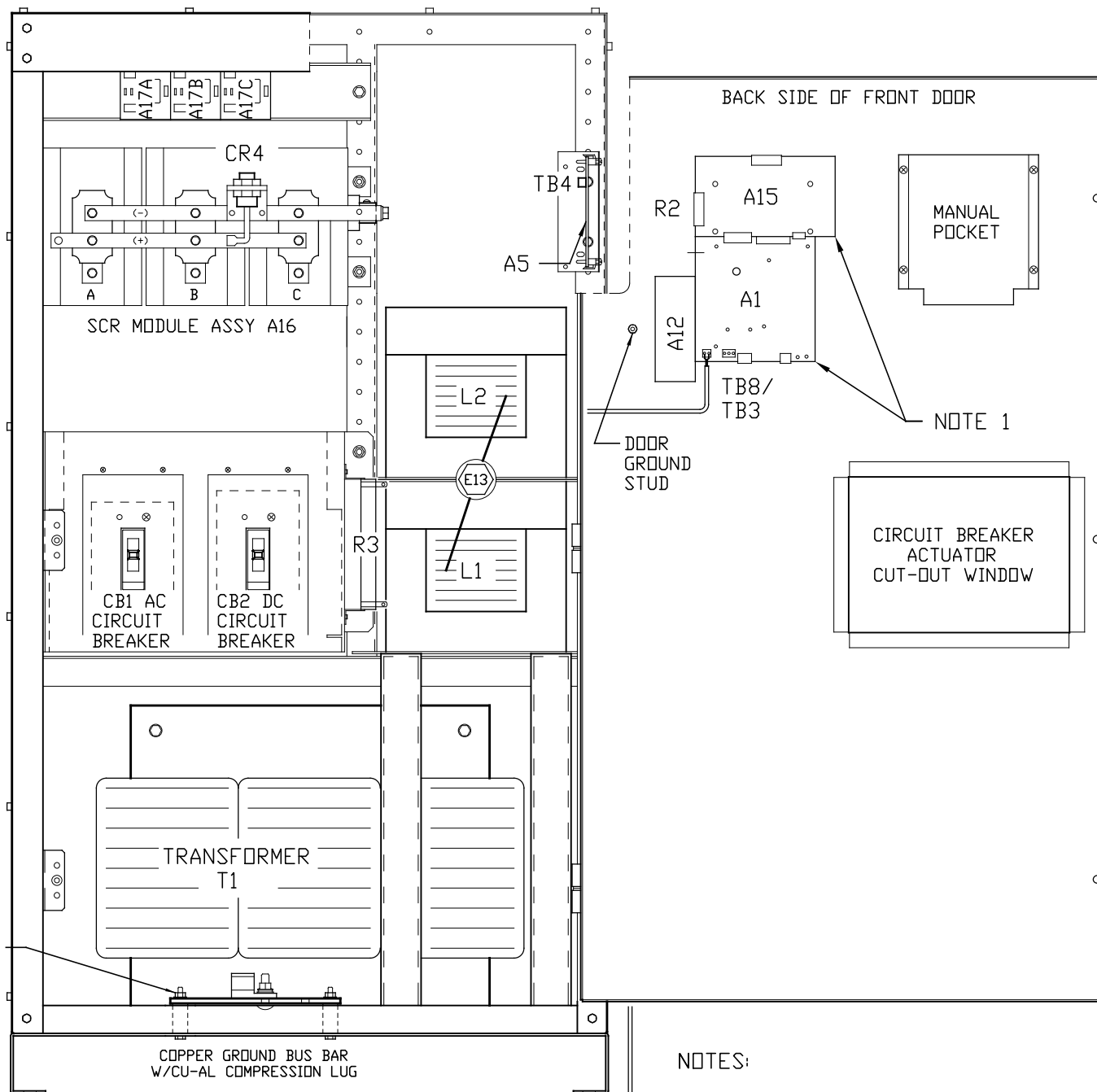
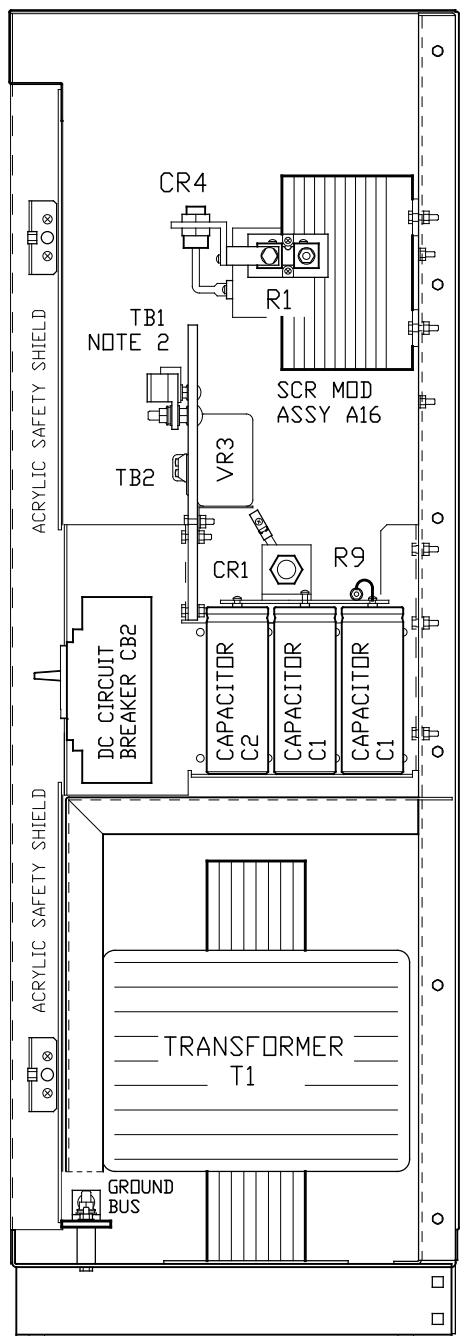
DUAL DIMENSIONS in mm

125-300ADC W/ COMMON OPTIONS

			THIRD ANGLE PROJECTION		1075 Saint John Street Easton, PA 18042-6661 PH 610-330-9000 FAX 610-330-8510 www.hindlepowerinc.com	
			DRAWN BY <b>KMW</b>	<b>111021</b>	TITLE <b>AT30 SERIES BATTERY CHARGER OUTLINE:          NEMA-1 STYLE-5030 ENCLOSURE</b>	
			ELECTRONIC APPROVAL SIGNATURES MAINTAINED BY MFG ECN LOG		DRAWING No <b>JE5086-24</b>	
			UNLESS OTHERWISE NOTED DIMENSIONS ARE IN INCHES. TOLERANCES ARE:		REV <b>0</b>	<b>B</b>
0	N/A	111021			SCALE <b>NTS</b>	SHEET <b>1</b> OF <b>1</b>
REV	ECN No	DATE			SALES No	SHEET <b>1</b> OF <b>1</b>

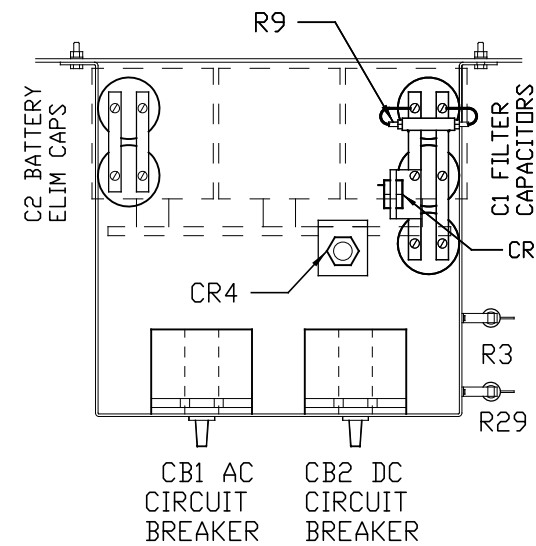
SIDE SECTION

FRONT VIEW



A10 25ft / 7.6m CABLE

TOP VIEW OF CIRCUIT BREAKER MOUNTING BRACKET

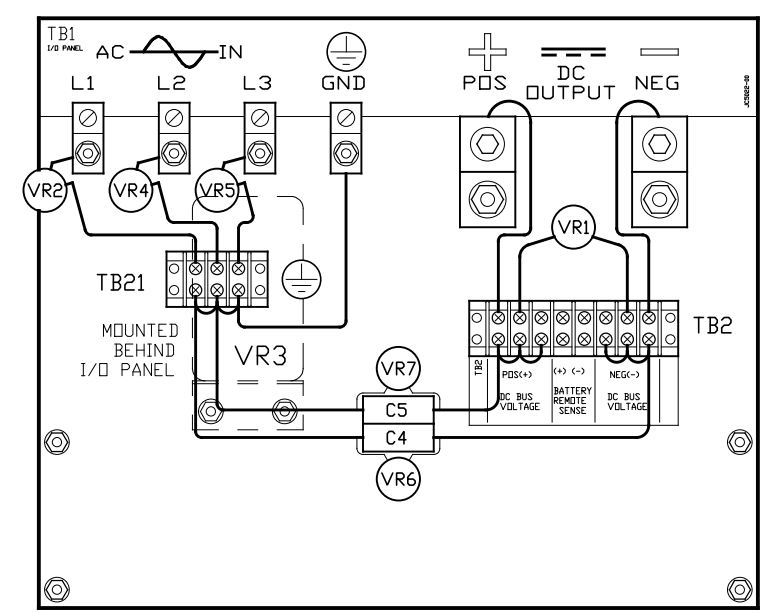


SYM	STANDARD COMPONENT DESCRIPTION
A1	MAIN CONTROL PC BOARD
A15	THREE PHASE GATE DRIVER PCB
A16	6-PULSE SCR MODULE HEATSINK ASSY
A17x	SCR SNUBBER PC BOARD - QTY. (3)
C4	EMI OUTPUT FILTER CAP (NEG-GND)
C5	EMI OUTPUT FILTER CAP (POS-GND)
CB1	AC INPUT CIRCUIT BREAKER (Hx3)
CB2	DC OUTPUT CIRCUIT BREAKER (Hx2)
CR4	FREE-WHEELING DIODE
L1	MAIN INDUCTOR
R1	MAIN DC SHUNT, NEG(-) BUS
R2	CURRENT RATING RESISTOR
R3	PWR SUPPLY BALLAST RES (130VDC)
T1	POWER ISOLATION TRANSFORMER
TB1	I/O TERMINAL BOARD
TB2	INT DC VOLTAGE (+/-) CONTACTS
TB3	SUMMARY ALARM CONTACTS
TB8	TEMPCD PROBE TERMINAL BLOCK
TB21	INTERNAL GROUND (≡) CONTACTS
VR1	OUTPUT SURGE SUPPRESSOR (+TO-)
VR2	INPUT SURGE SUPPRESSOR (LINE 1)
VR4	INPUT SURGE SUPPRESSOR (LINE 2)
VR5	INPUT SURGE SUPPRESSOR (LINE 3)
VR6	OUTPUT SURGE SUPPRESSOR (-)
VR7	OUTPUT SURGE SUPPRESSOR (+)

SYM	FEATURED OPTION COMP DESCRIPTION
A5	AUXILIARY ALARM RELAY PC BOARD
A10	TEMPERATURE COMPENSATION PROBE
A12	COMMUNICATIONS MODULE PC BOARD
C1x	DC OUTPUT FILTER CAPACITOR
C2	BATTERY ELIMINATOR CAPACITOR
CR1	POLARITY DIODE
E13	INDUCTOR INTER-CONNECT POINT
L2	FILTER INDUCTOR
R9	FILTER CAP (C1) BLEED RESISTOR
R29	COMM MOD BALLAST RES (130VDC)
TB4	AUX ALARM PCB (A5) TERM BLOCK
VR3	AC INPUT LIGHTNING ARRESTOR

I/O TERMINAL BOARD (TB1) DETAIL



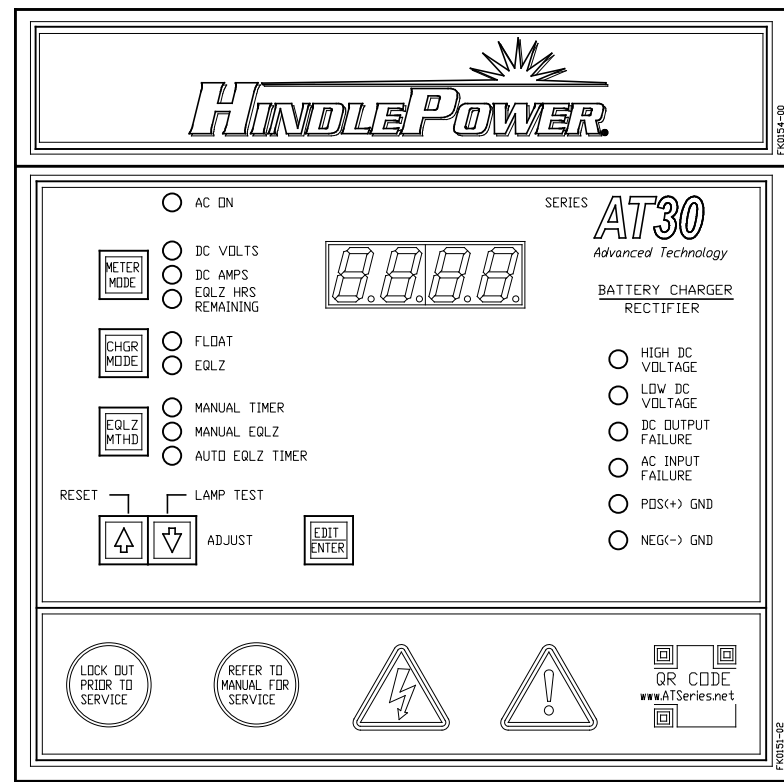
- NOTES:
- 1) FOR DETAIL VIEWS OF ALL PC BOARDS (A1, A5, A15, A17, etc.) SEE DRAWING JE5091-24.
  - 2) I/O PANEL TERMINAL BOARD (TB1) NOT SHOWN FOR CLARITY OF VIEW. SEE DETAIL TO RIGHT.

I/O TERMINAL	DESCRIPTION - TYPE	CONNECTION
TB1(+/-)	POS/NEG DC OUTPUT TERMS - CU-ALUMINUM COMPRESSION LUG	#6 AWG-350 MCM
REM SENSE(+/-)	POS/NEG REMOTE SENSE TERMINALS - 6-32 COMP SCREW	#16-14 AWG
(2) TB1-GND	USER GROUND TERMINAL - CU-ALUMINUM COMPRESSION LUG	#14 AWG-350 MCM
TB1-L1/L2/L3	AC INPUT TERMINALS - CU-ALUMINUM COMPRESSION LUG	#14-1/0 AWG
TB3	SUMMARY ALARM TERMINAL BLOCK - SOLDERLESS COMP SCREW	#22-14 AWG
TB4	AUXILIARY ALARM TERM BLOCK - SOLDERLESS COMPRESSION	#22-14 AWG
TB8	TEMPCD PROBE (A10) INTERCONNECTION TERMINAL BLOCK	#22-14 AWG

125-300ADC W/ COMMON OPTIONS

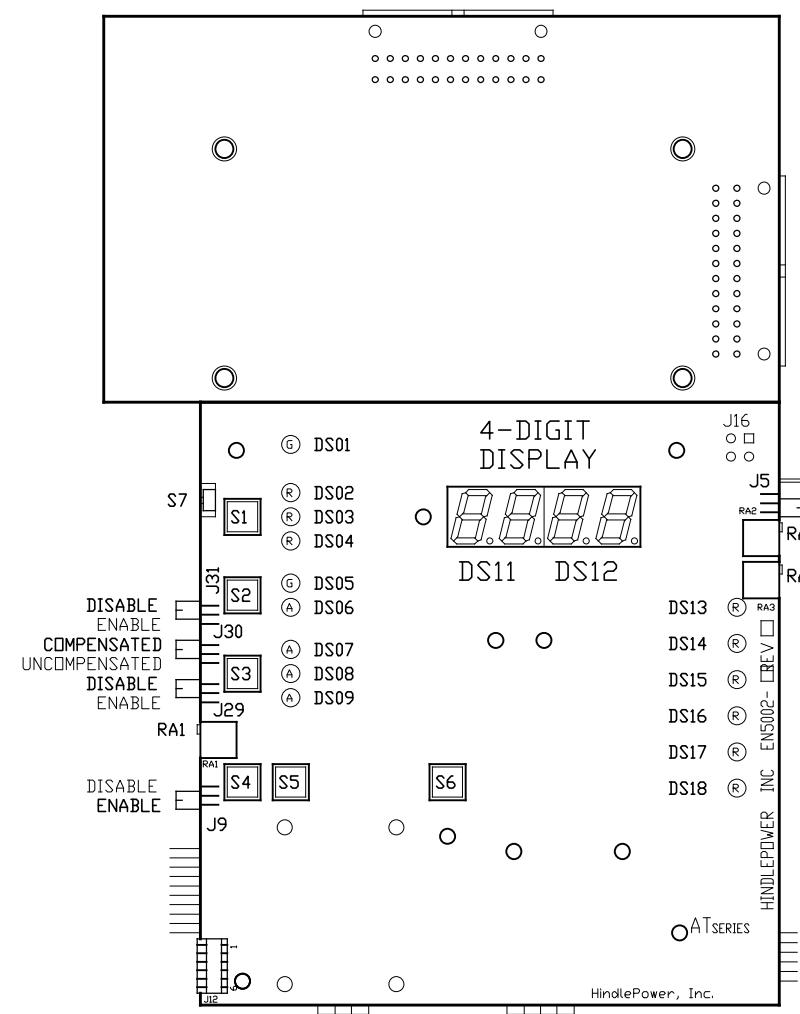
			THIRD ANGLE PROJECTION		 1075 Saint John Street Easton, PA 18042-6661 PH 610-330-9000 FAX 610-330-8510 www.hindlepowerinc.com				
			DRAWN BY	KMW			111021		
			ELECTRONIC APPROVAL SIGNATURES MAINTAINED BY MFG ECN LOG			TITLE	AT30 SERIES BATTERY CHARGER INTERNAL COMPONENT LAYOUT: STYLE-5030		
			0	N/A	111021	DRAWING No	JE5089-24		
REV	ECN No	DATE				SCALE	NTS	SALES No	SHEET 1 OF 1

- INDICATOR LIGHTS (LEDs):
- DS01 - GREEN - AC ON
  - DS02 - RED - DC VOLTS
  - DS03 - RED - DC AMPERES
  - DS04 - RED - EQUALIZE HRS REMAINING
  - DS05 - GREEN - FLOAT
  - DS06 - AMBER - EQUALIZE
  - DS07 - AMBER - MANUAL TIMER
  - DS08 - AMBER - MANUAL EQUALIZE
  - DS09 - AMBER - AUTO EQUALIZE TIMER
  - DS10 - RED - LOW LEVEL DETECT
  - DS11 - RED - (METER DISPLAY)
  - DS12 - RED - (METER DISPLAY)
  - DS13 - RED - HIGH DC VOLTAGE
  - DS14 - RED - LOW DC VOLTAGE
  - DS15 - RED - DC OUTPUT FAILURE
  - DS16 - RED - AC INPUT FAILURE
  - DS17 - RED - POS(+) GROUND FAULT
  - DS18 - RED - NEG(-) GROUND FAULT



CONTROL PANEL  
(PART No. FK0151-02)

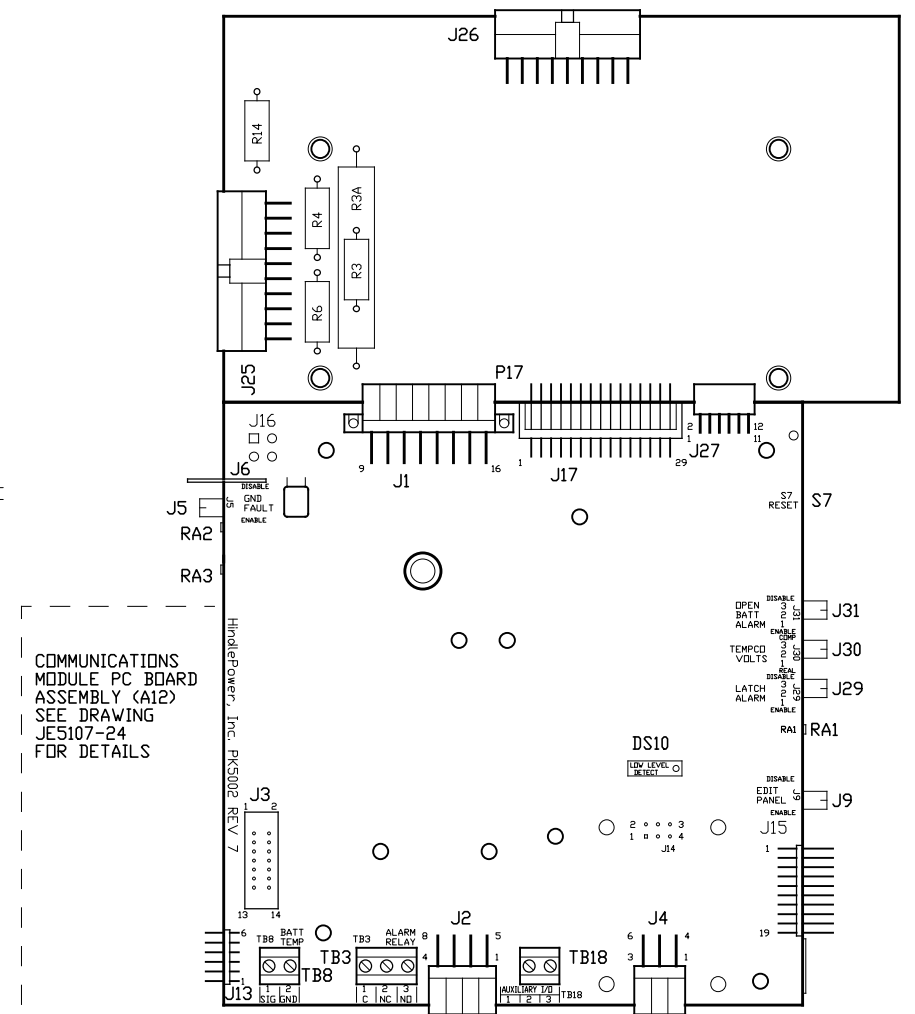
THREE PHASE GATE DRIVER PC BOARD (A15)



MAIN CONTROL PC BOARD (A1)

FRONT VIEW - FACING CHARGER DOOR WHEN INSTALLED

THREE PHASE GATE DRIVER PC BOARD (A15)

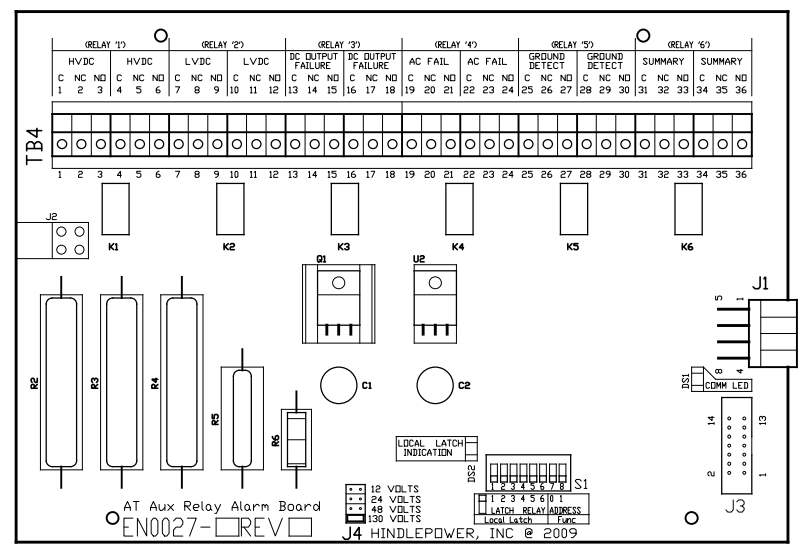


MAIN CONTROL PC BOARD (A1)

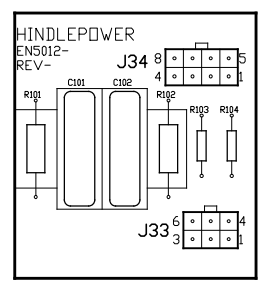
BACK VIEW - FACING CHARGER COMPONENTS WHEN INSTALLED

COMMUNICATIONS  
MODULE PC BOARD  
ASSEMBLY (A12)  
SEE DRAWING  
JE5107-24  
FOR DETAILS

NOTE: UNLESS OTHERWISE SPECIFIED, ALL USER TERMINAL BLOCKS (TB3/TB4/TB8) ARE SOLDERLESS COMPRESSION TERMINALS, ACCEPTING #22-14 AWG WIRE. ALL ALARM CONTACTS SHOWN IN NON-ALARM STATE, WITH CHARGER ENERGIZED AND ALARM RELAYS ENERGIZED (FAIL SAFE). ALL ALARM CONTACTS WILL CHANGE STATE WHEN CHARGER IS POWERED DOWN. CONTACT RATING IS 0.5A @ 125VAC/VDC RESISTIVE.



AUXILIARY ALARM RELAY PC BOARD (A5)



SCR SNUBBER  
PC BOARD (A17x)  
THREE (3) REQ'D  
PER CHARGER

A5-J1 CONNECTED TO  
A1-J2 VIA EHS045-0#  
8-PIN SERIAL CABLE

- OTHER CONTROLS:
- RA1 - LOW LEVEL DETECT ADJUST
  - RA2 - GROUND FAULT BALANCE
  - RA3 - GROUND FAULT SENSITIVITY

- NON-USER ACCESSED JUMPERS:
- J3 - OLD A5 RIBBON CONNECTOR
  - J12 - BOARD PROGRAMMING
  - J14 - OLD FORCED LOAD SHARING
  - J15 - MANUFACTURING TEST
  - J16 - OLD INTERNAL TEMP

USER JUMPERS:

- J1 - not used with 3PH (MAINFRAME SIGNAL HARNESS)
- J2 - AUX ALARM RELAY BOARD (A5) SERIAL CONNECTOR
- J4 - FORCED LOAD SHARING CABLE INTERCONNECTOR
- J5 - GROUND FAULT ENABLE/DISABLE
- J6 - EARTH GROUND CONNECTOR
- J9 - FRONT PANEL ENABLE/DISABLE (LOCKOUT)
- J13 - COMMUNICATIONS PC BOARD (A12) INTERCONNECTOR
- J17 - 3PH GATE DRIVER PC BOARD (A15) INTERCONNECTOR
- J25 - MAINFRAME CONTROL SIGNAL HARNESS
- J26 - SCR FIRING CONTROL HARNESS (3 PHASE/6 PULSE)
- J27 - 3PH GATE DRIVER PC BOARD (A15) INTERCONNECTOR
- J29 - LATCHING ALARMS ENABLE/DISABLE SELECTOR
- J30 - TEMPCO VOLTAGES (COMPENSATED/UNCOMP) SELECTOR
- J31 - BATTERY OPEN ALARM ENABLE/DISABLE SELECTOR

SWITCHES:

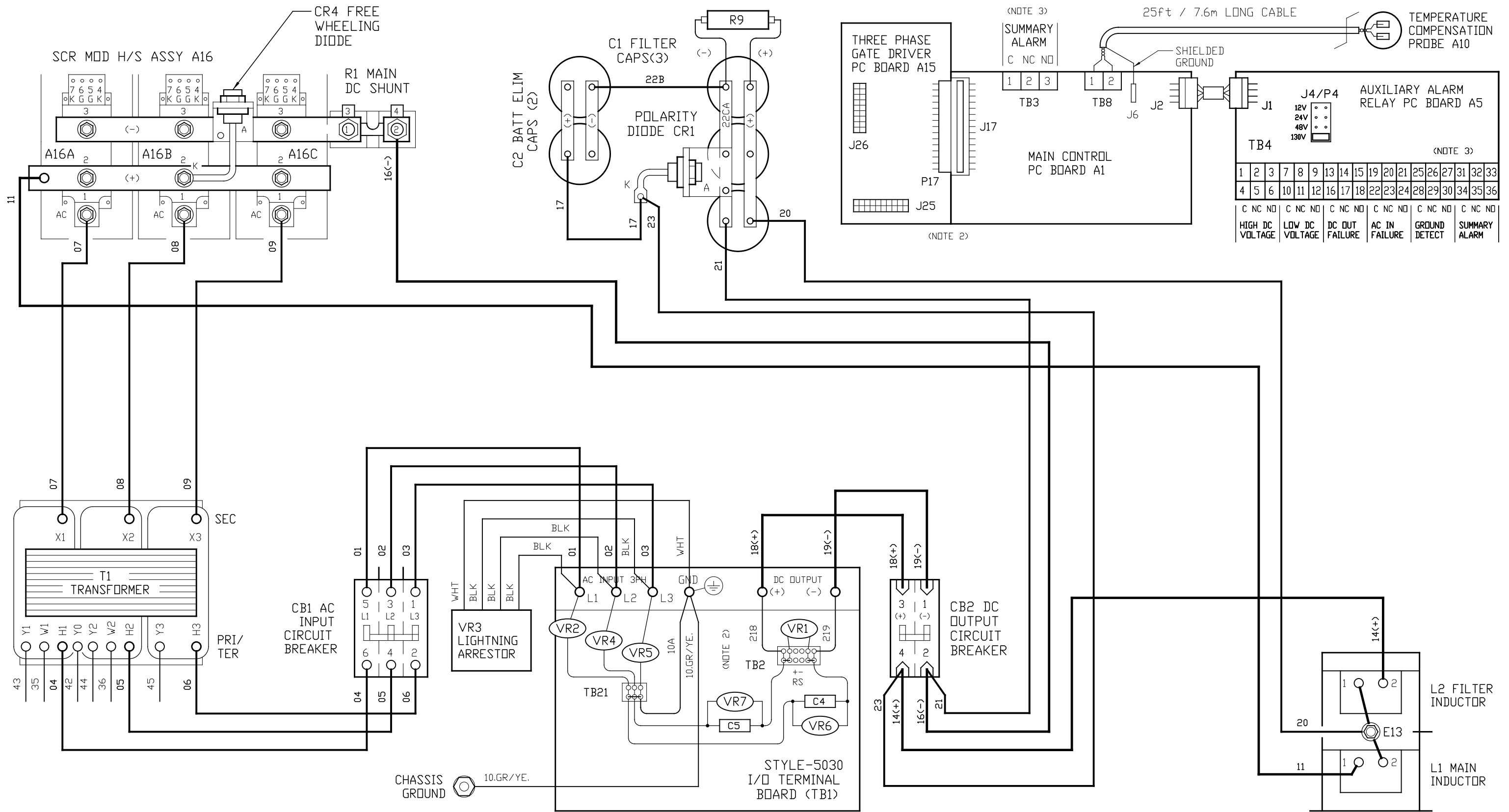
- S1 - METER MODE
- S2 - CHARGER MODE
- S3 - EQUALIZE METHOD
- S4 - ΔADJUST
- S5 - ▽ADJUST
- S6 - EDIT / ENTER
- S7 - PROCESSOR MANUAL RESET

TERMINAL BLOCKS:

- TB3 - SUMMARY ALARM RELAY CONTACTS
- TB4 - AUX ALARM RELAY CONTACTS
- TB8 - DPT TEMPCO PROBE (A10) CONN
- TB18 - REM SHUTDOWN INTERFACE

			THIRD ANGLE PROJECTION		125-300ADC W/ COMMON OPTIONS	
			DRAWN BY <b>KMW</b> 111021		<b>HindlePower</b> 1075 Saint John Street Easton, PA 18042-6661 PH 610-330-9000 FAX 610-330-8510 www.hindlepowerinc.com	
			ELECTRONIC APPROVAL SIGNATURES MAINTAINED BY MFG ECN LOG		TITLE <b>AT30 SERIES BATTERY CHARGER CONTROL PANEL / PC BOARD DETAIL</b>	
0 N/A 111021			UNLESS OTHERWISE NOTED DIMENSIONS ARE IN INCHES. TOLERANCES ARE:		DRAWING No <b>JE5091-24</b>	
REV ECN No DATE			SCALE NTS		SALES No SHEET 1 OF 1	





NOTES:

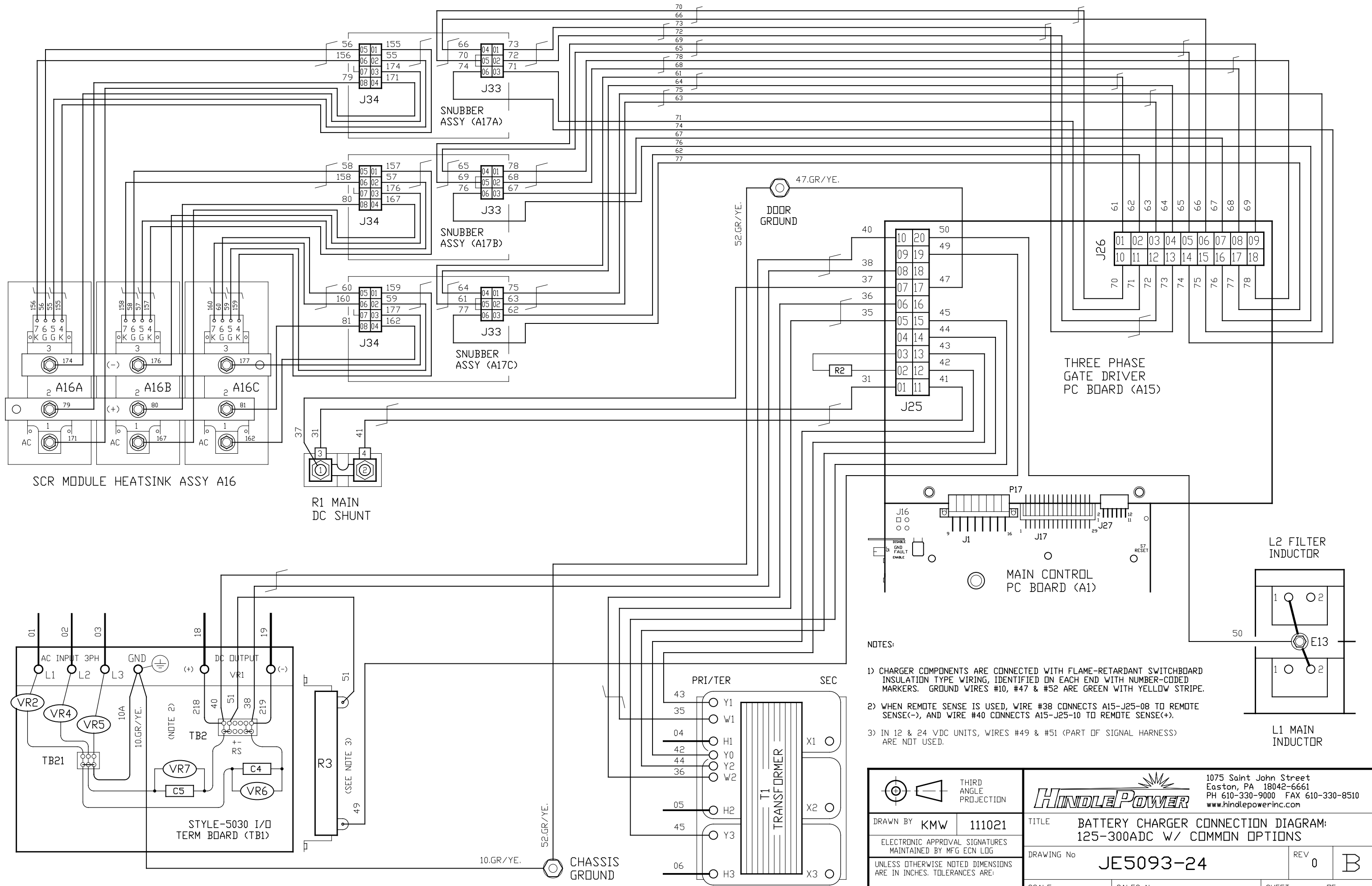
- 1) CHARGER COMPONENTS ARE CONNECTED WITH BLACK FLAME-RETARDANT SWITCHBOARD INSULATION SYSTEM (SIS) TYPE WIRING, IDENTIFIED ON EACH END WITH NUMBER-CODED WIRE MARKERS. GROUND WIRES ARE GREEN WITH YELLOW STRIPE. DIODES (CR1 & CR4) ARE ANODE-MOUNTED TYPE, WIRE TO CATHODE.
- 2) THIS DRAWING (SHEET 1) SHOWS THE MAINFRAME POWER WIRING AND USER CONNECTION CONTACTS TO CONTROL PC BOARDS (A1 & A5). SEE SHEET 2 FOR ALL CONTROL (SIGNAL) WIRING, INCLUDING REMOTE SENSE MODIFICATIONS, IF APPLICABLE.
- 3) STANDARD USER ALARM CONTACTS (TB3, TB4, etc.) ARE SOLDERLESS COMPRESSION SCREW TERMINALS, ACCEPTING #22-14 AWG WIRE.

FEATURED OPTIONS:

- STD DC OUTPUT FILTERING
- BATTERY ELIMINATOR FILTER CAP
- AC INPUT CIRCUIT BREAKER
- DC OUTPUT CIRCUIT BREAKER
- AUXILIARY ALARM RELAY PC BOARD
- AC INPUT LIGHTNING ARRESTOR
- EXTERNAL TEMPCO REMOTE PROBE

		THIRD ANGLE PROJECTION	
DRAWN BY		KMW	111021
ELECTRONIC APPROVAL SIGNATURES MAINTAINED BY MFG ECN LOG			
UNLESS OTHERWISE NOTED DIMENSIONS ARE IN INCHES. TOLERANCES ARE:			
0	N/A	111021	
REV	ECN No	DATE	

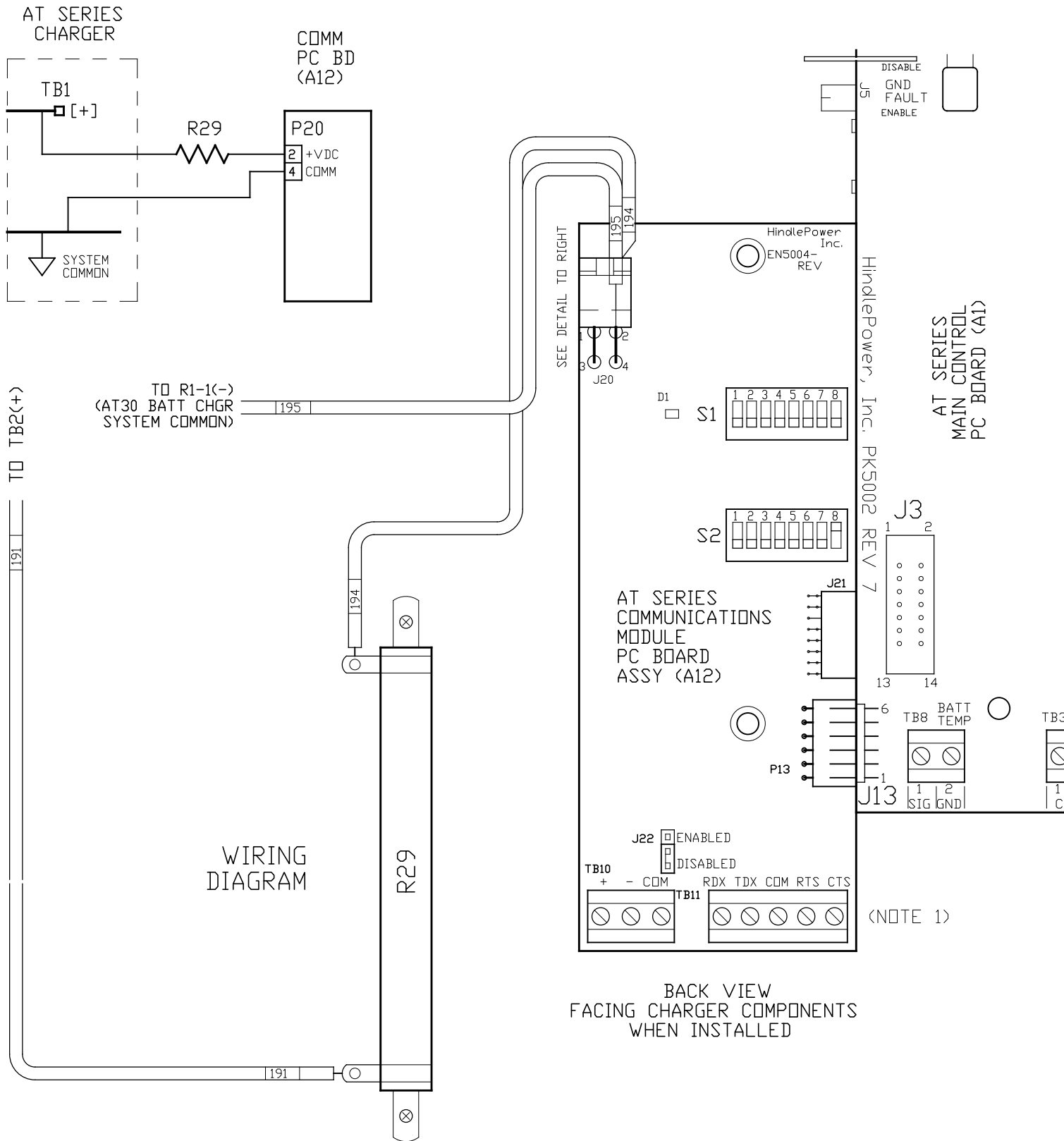
<b>HINDLEPOWER</b>		1075 Saint John Street Easton, PA 18042-6661 PH 610-330-9000 FAX 610-330-8510 www.hindlepowerinc.com	
TITLE BATTERY CHARGER CONNECTION DIAGRAM: 125-300ADC W/ COMMON OPTIONS			
DRAWING No		JE5093-24	REV 0 B
SCALE	NTS	SALES No	SHEET 1 OF 2



- NOTES:
- 1) CHARGER COMPONENTS ARE CONNECTED WITH FLAME-RETARDANT SWITCHBOARD INSULATION TYPE WIRING, IDENTIFIED ON EACH END WITH NUMBER-CODED MARKERS. GROUND WIRES #10, #47 & #52 ARE GREEN WITH YELLOW STRIPE.
  - 2) WHEN REMOTE SENSE IS USED, WIRE #38 CONNECTS A15-J25-08 TO REMOTE SENSE(-), AND WIRE #40 CONNECTS A15-J25-10 TO REMOTE SENSE(+).
  - 3) IN 12 & 24 VDC UNITS, WIRES #49 & #51 (PART OF SIGNAL HARNESS) ARE NOT USED.

THIRD ANGLE PROJECTION				1075 Saint John Street Easton, PA 18042-6661 PH 610-330-9000 FAX 610-330-8510 www.hindlepowerinc.com	
DRAWN BY <b>KMW</b> <b>111021</b>		TITLE <b>BATTERY CHARGER CONNECTION DIAGRAM: 125-300ADC W/ COMMON OPTIONS</b>			
ELECTRONIC APPROVAL SIGNATURES MAINTAINED BY MFG ECN LOG		DRAWING No <b>JE5093-24</b>		REV <b>0</b> <b>B</b>	
UNLESS OTHERWISE NOTED DIMENSIONS ARE IN INCHES. TOLERANCES ARE:		SCALE <b>NTS</b>		SHEET <b>2</b> OF <b>2</b>	

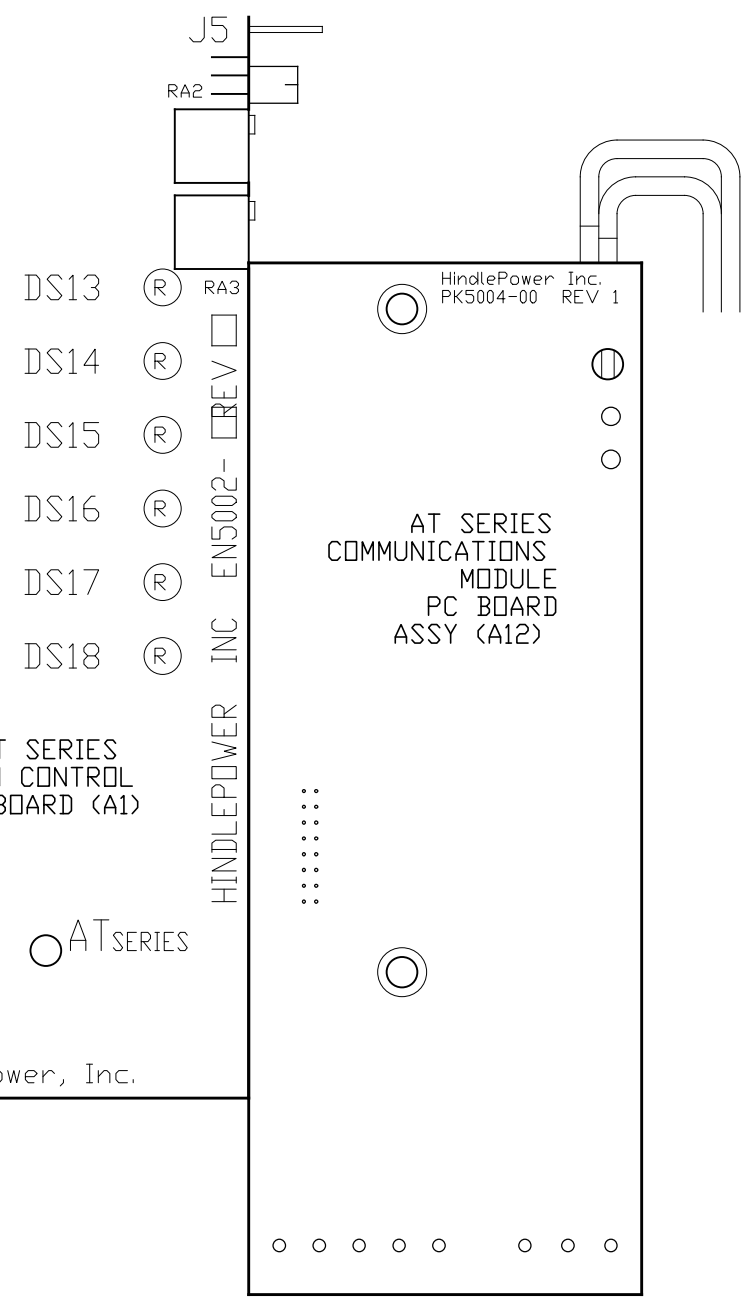
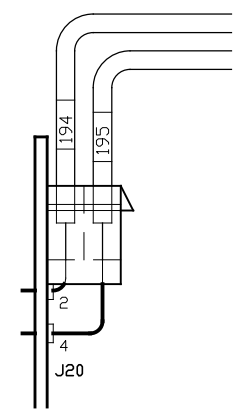
SYSTEM SCHEMATIC



WIRING DIAGRAM

BACK VIEW FACING CHARGER COMPONENTS WHEN INSTALLED

SIDE VIEW OF PC BOARD



FRONT VIEW FACING CHARGER DOOR WHEN INSTALLED

- INDICATOR LIGHTS:  
 D1 - STATUS LED
- JUMPERS:  
 J20 - POWER SUPPLY CONNECTION  
 J21 - FACTORY CONNECTION  
 J22 - RS-485 TERMINATING RESISTOR (ENABLE/DISABLE)
- CONNECTORS:  
 P13 - PLUG FOR MAIN CONTROL PCB (A1) J13 CONNECTION
- SWITCHES:  
 S1 - CONFIGURATION SWITCHES  
 S2 - MODBUS ADDRESS
- TERMINAL BLOCKS:  
 TB10 - RS-485 USER CONNECTION  
 TB11 - RS-232 USER CONNECTION

NOTES:  
 1) UNLESS OTHERWISE SPECIFIED, ALL USER TERMINAL BLOCKS (TB10/TB11) ARE SOLDERLESS COMPRESSION TERMINALS. CONTACT RATING IS 0.5A @ 125VAC/DC, ACCEPTING #22-14 AWG WIRE.  
 2) FOR COMPLETE MANUAL OF AT SERIES COMMUNICATIONS MODULE OPTION, SEE OPERATING INSTRUCTIONS: JA0102-04.pdf

- FEATURED OPTIONS:  
 - AT SERIES COMM MOD PCB (A12)  
 - 130Vdc POWER SUPPLY RESISTOR (R29)

			THIRD ANGLE PROJECTION		1075 Saint John Street Easton, PA 18042-6661 PH 610-330-9000 FAX 610-330-8510 www.hindlepowerinc.com	
			DRAWN BY <b>KMW</b> 111021		TITLE <b>AT SERIES BATTERY CHARGER COMMUNICATIONS MODULE OPTION DETAIL</b>	
			ELECTRONIC APPROVAL SIGNATURES MAINTAINED BY MFG ECN LOG		DRAWING No <b>JE5107-24</b> REV <b>0</b> <b>B</b>	
			UNLESS OTHERWISE NOTED DIMENSIONS ARE IN INCHES. TOLERANCES ARE:		SCALE <b>NTS</b> SALES No SHEET <b>1</b> OF <b>1</b>	
0	N/A	111021				
REV	ECN No	DATE				

125-300ADC W/ COMMON OPTIONS