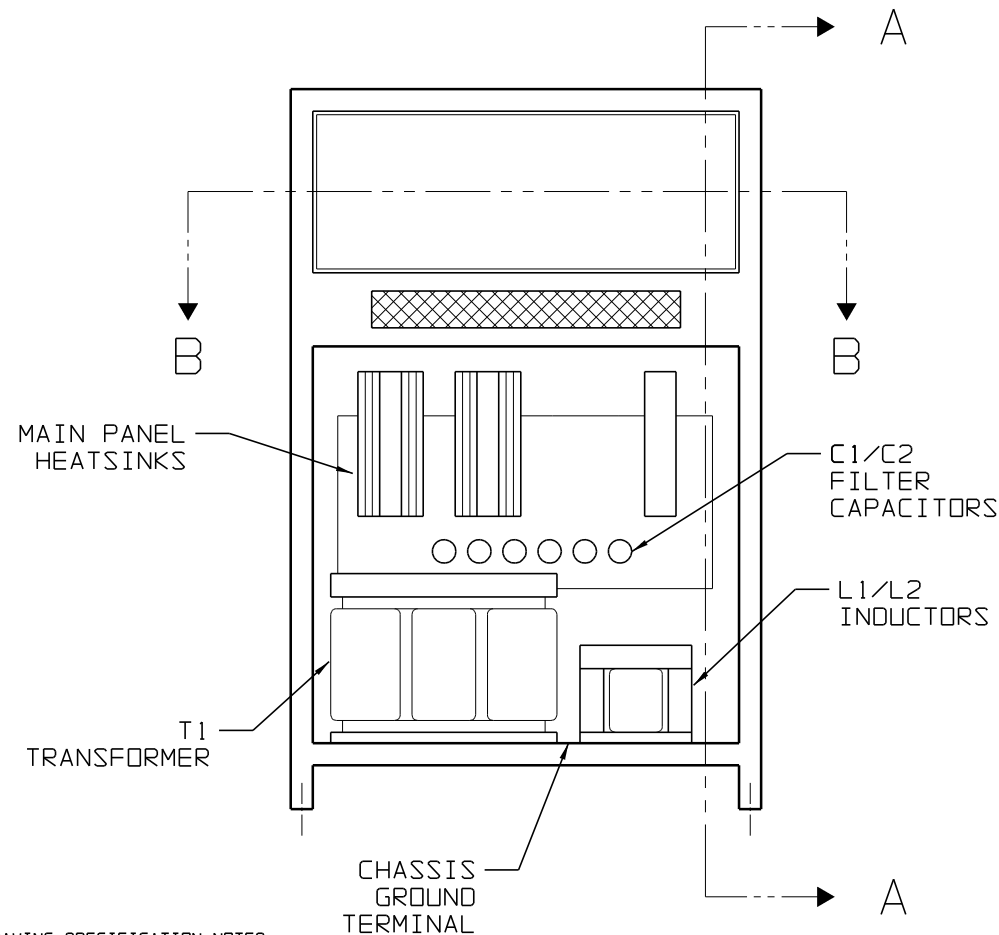
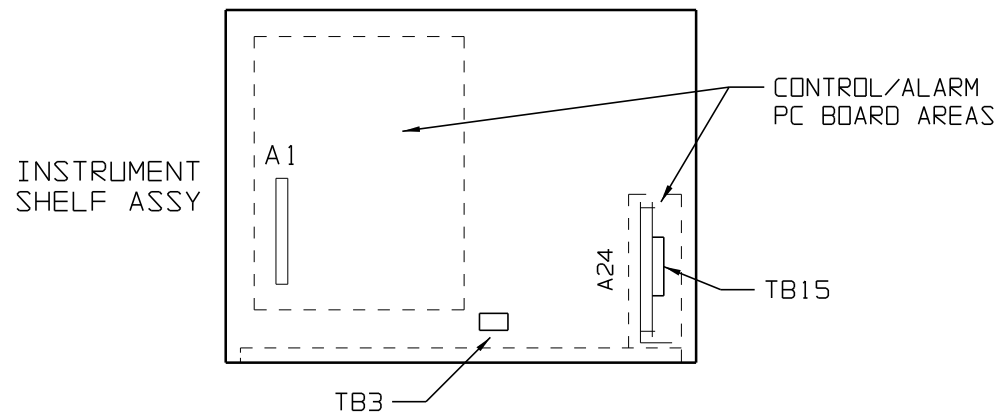
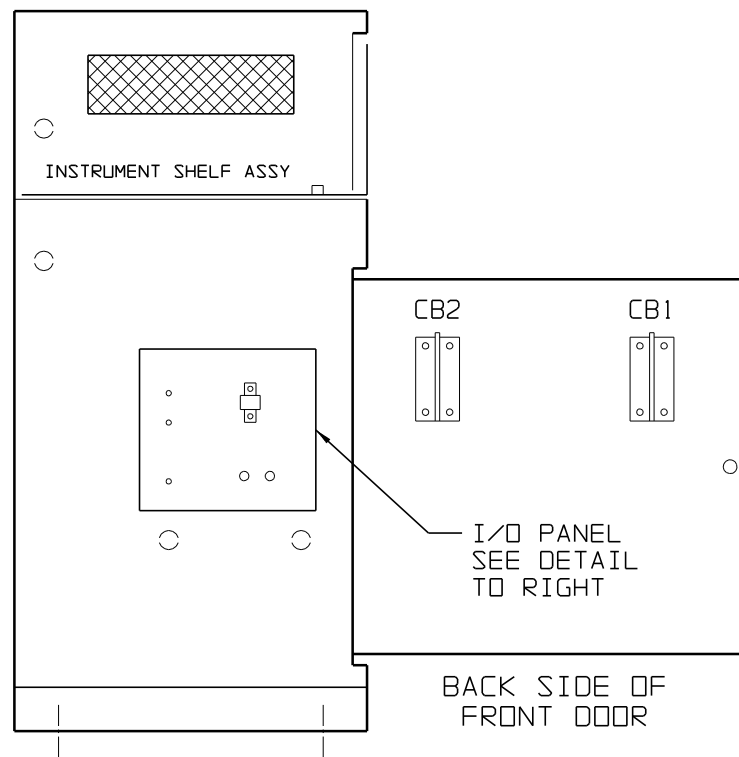


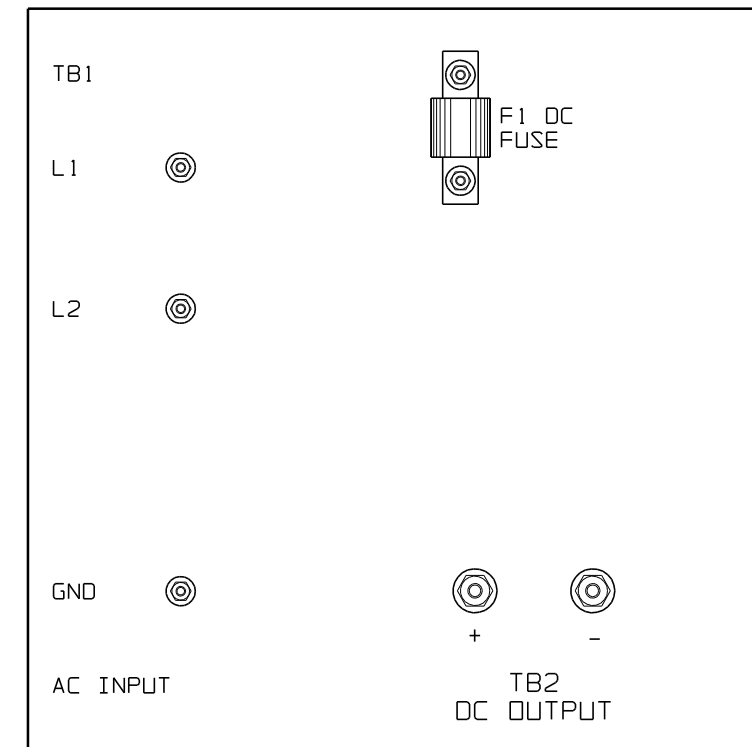
# SECTION B-B



# SECTION A-A



# INPUT-OUTPUT PANEL DETAIL



### CONNECTION NOTES:

- \* TB1 AC INPUT TERMINALS THREE (3) 0.25-20 STUDS TO ACCEPT CUSTOMER WIRING.
- \* TB2 DC OUTPUT TERMINALS TWO (2) 0.375-16 STUDS TO ACCEPT CUSTOMER WIRING.
- \* TB3 REMOTE ALARM INDICATION TERMINAL BLOCK, BARRIER TYPE, 6-32 BINDER HEAD SCREW TERMINAL, WILL ACCOMMODATE LUGS FOR #22-16 AWG. WIRE.
- \* TB15 REMOTE ALARM INDICATION TERMINAL BLOCK, SOLDERLESS PLUG-IN TERMINAL, WILL ACCEPT #18-14 AWG. WIRE. (LOCATED ON A24 ALARM BOARD)

### DRAWING SPECIFICATION NOTES:

- 1) I/O TERMINAL BLOCKS:  
SIZE AND TYPE DIFFER FROM MODEL TO MODEL, BASED UPON CHARGER RATING.
- 2) PROTECTION:  
THE FEATURED LAYOUT REPRESENTS THE MOST COMMON BATTERY CHARGER CONFIGURATION. NUMBER AND TYPE OF AC & DC PROTECTION (CIRCUIT BREAKERS / FUSES) DIFFER FROM MODEL TO MODEL, BASED UPON CHARGER RATING AND SPECIFICATION.
- 2) FILTERING:  
THE FEATURED LAYOUT REPRESENTS A FILTERED ELIMINATOR (SCR-F-E) TYPE BATTERY CHARGER. UNFILTERED UNITS WILL NOT FEATURE COMPONENTS L2, C1 & C2. NUMBER AND LOCATION OF CAPACITORS MAY CHANGE FROM UNIT TO UNIT.
- 3) ALARMS:  
THE FEATURED LAYOUT REPRESENTS A BATTERY CHARGER WITH THE OPTIONAL COMBINED ALARM STATUS MONITOR (A24/TB15) AND AT LEAST ONE SEPERATE ALARM OPTION, REQUIRING THE REMOTE ALARM TERMINAL BLOCK (TB3).

				THIRD ANGLE PROJECTION		 1075 Saint John Street Easton, PA 18042-6661 PH 610-330-9000 FAX 610-330-8510 www.hindlepowerinc.com	
				DRAWN BY	MCR	062002	
				APPROVED	MCT	072002	
				UNLESS OTHERWISE NOTED DIMENSIONS ARE IN INCHES. TOLERANCES ARE:			
1	E1153	022703		TITLE BATT CHGR INTERNAL COMPONENT LAYOUT: IPH SCR/SCR-F SERIES NEMA-1 STYLE-3 ENCLOSURE			
0	E0877	062002	MCT	DRAWING No JE0243-01			
REV	ECN No	DATE	APP	SCALE	NTS	PART No	JE0243-01
				SHEET	1	OF	1