

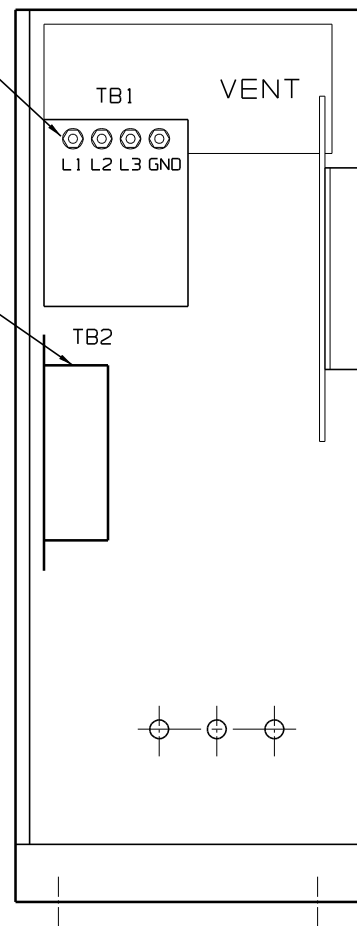
SECTION A-A

AC INPUT

TB1 (3) 0.375-16 STUDS TO ACCEPT CUSTOMER WIRING
GROUND TERMINAL (1)
0.375-16 STUD TERMINAL

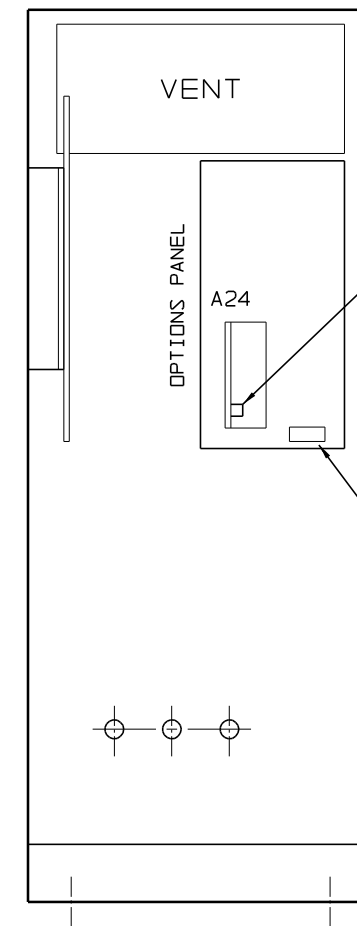
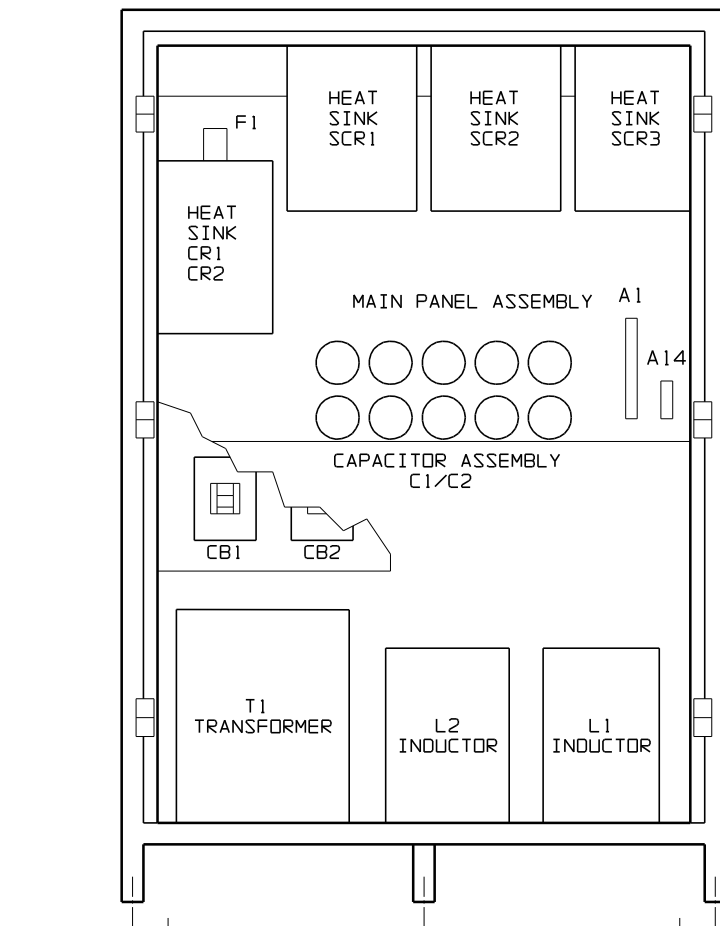
DC OUTPUT

TB2 UTILIZES THE TOP LUGS OF CIRCUIT BREAKER CB2, WITH ONE (1) COMPRESSION CONNECTOR LUG PER POLE. EACH LUG WILL ACCEPT: (CHECK CB2 SPECS)



A ← → B

SECTION B-B



TB15 REMOTE ALARM TERMINAL BLOCK, SOLDERLESS PLUG-IN TERMINAL, WILL ACCEPT #18-14 AWG. WIRE. (LOCATED ON A24 ALARM BOARD)

TB3 REMOTE ALARM TERMINAL BLOCK, BARRIER TYPE, 6-32 BINDER HEAD SCREW TERMINALS, WILL ACCEPT #22-16 AWG. WIRE.

GENERAL NOTES:

- * FRONT PANELS (DOORS) AND CENTER DIVIDER ARE NOT SHOWN FOR CLARITY.
- * CIRCUIT BREAKER(S) MOUNTED ON SIDE BRACKET, NOT FULLY SHOWN FOR CLARITY.

DRAWING SPECIFICATION NOTES:

- 1) I/O TERMINAL BLOCKS:
SIZE AND TYPE DIFFER FROM MODEL TO MODEL, BASED UPON CHARGER RATING.
- 2) PROTECTION:
THE FEATURED LAYOUT REPRESENTS THE MOST COMMON BATTERY CHARGER CONFIGURATION. NUMBER AND TYPE OF AC & DC PROTECTION (CIRCUIT BREAKERS / FUSES) DIFFER FROM MODEL TO MODEL, BASED UPON CHARGER RATING AND SPECIFICATION.
- 2) FILTERING:
THE FEATURED LAYOUT REPRESENTS A FILTERED ELIMINATOR (SCRF-E) TYPE BATTERY CHARGER. UNFILTERED UNITS WILL NOT FEATURE COMPONENTS L2, C1 & C2. NUMBER AND LOCATION OF CAPACITORS MAY CHANGE FROM UNIT TO UNIT.
- 3) ALARMS:
THE FEATURED LAYOUT REPRESENTS A BATTERY CHARGER WITH THE OPTIONAL COMBINED ALARM STATUS MONITOR (A24/TB15) AND AT LEAST ONE SEPERATE ALARM OPTION, REQUIRING THE REMOTE ALARM TERMINAL BLOCK (TB3).

				THIRD ANGLE PROJECTION		1075 Saint John Street Easton, PA 18042-6661 PH 610-330-9000 FAX 610-330-8510 www.hindlepowerinc.com	
				DRAWN BY MCR 062002		TITLE BATT CHGR INTERNAL COMPONENT LAYOUT: SCR/SCRF SERIES NEMA-1 STYLE-5 ENCLOSURE	
				APPROVED MCT 072002		DRAWING No JE0245-00	
				UNLESS OTHERWISE NOTED DIMENSIONS ARE IN INCHES. TOLERANCES ARE:		REV 1 B	
REV	ECN No	DATE	APP	SCALE NTS		PART No JE0245-00	SHEET 1 OF 1