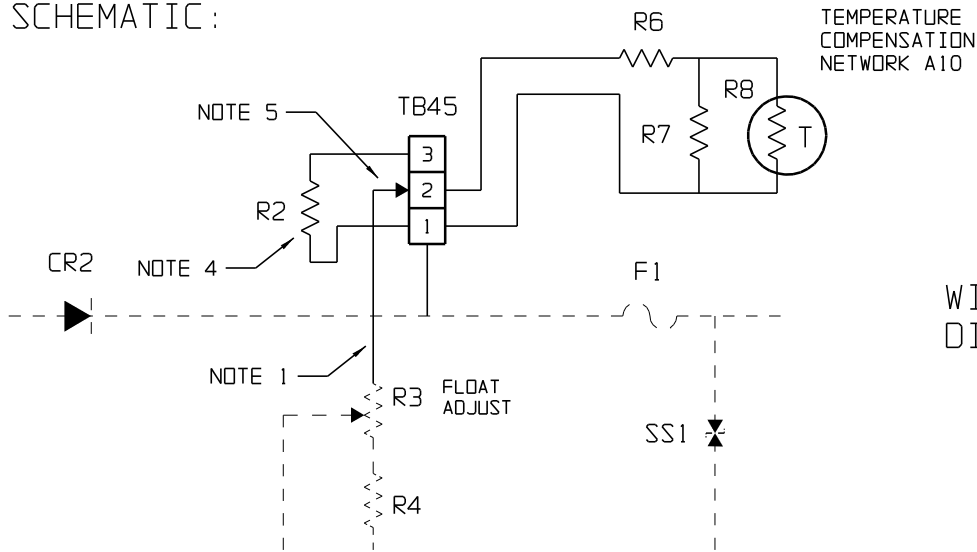
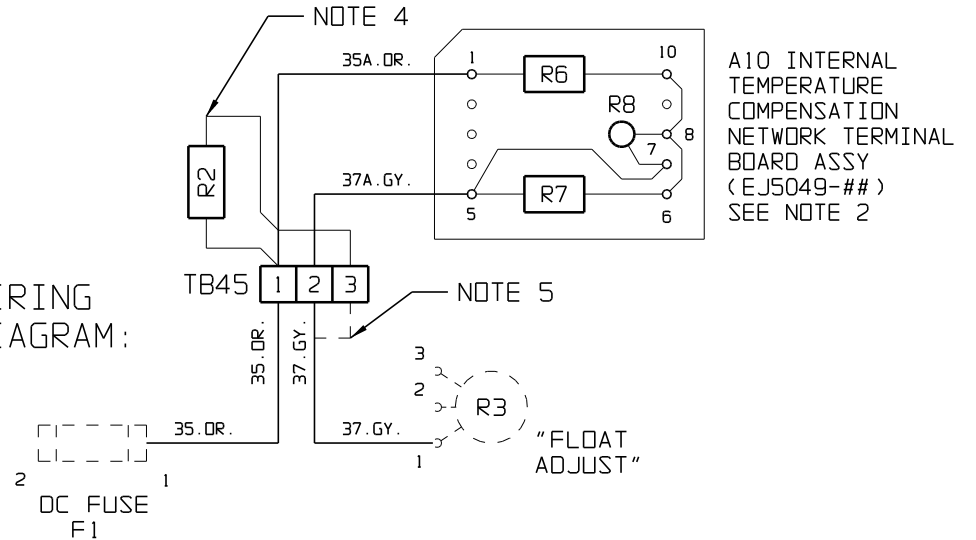


SCHEMATIC:



TEMPERATURE
COMPENSATION
NETWORK A10

WIRING
DIAGRAM:



A10 INTERNAL
TEMPERATURE
COMPENSATION
NETWORK TERMINAL
BOARD ASSY
(EJ5049-##)
SEE NOTE 2

INSTALLATION INSTRUCTIONS:

- 1) SELECT PROPER EJ5049-## TEMPCO NETWORK TERMINAL BOARD SUB-ASSEMBLY (A10) FROM EJ0826-0# BOM.
- 2) MOUNT A10 BOARD NEAR AIR INLET AT BOTTOM OF ENCLOSURE, USING DOUBLE-SIDED TAPE (PG0015-00).
- 3) ALL WIRE IS #20 AWG UNLESS OTHERWISE SPECIFIED.
- 4) LUG VOLTAGE DIVIDER RESISTOR (R2) FROM CHARGER MAINFRAME BOM, AND PLACE ACROSS TB45-1 TO TB45-3.
- 5) TO DISABLE TEMPCO (WHEN CALIBRATING CHARGER), MOVE TB45-2 CONNECTION (WIRE# 37.GY) TO TB45-3.

GENERAL NOTES:

- 1) THIS NETWORK REPLACES R2 IN THE SCR/SCRF SERIES FEEDBACK VOLTAGE DIVIDER. CHARGER MAINFRAME COMPONENTS SHOWN DASHED FOR REFERENCE PURPOSES.
- 2) AVERAGE TEMPERATURE COEFFICIENT:
-2.5 mV/V/°C / -3.3 mV/CELL/°F @ 2.4 VPC
- 3) ADD USER INSTRUCTIONS (JA5022-00) TO MANUAL WHEN EJ0826-XX IS SUPPLIED.

7	21776	081909	ND	 THIRD ANGLE PROJECTION	TITLE SCR/SCRF SERIES INTERNAL TEMPERATURE COMPENSATION NETWORK OPTION (PB)			
6	21225	071508	ND					
5	10009	062293	WKB	DRAWN BY <i>WKB</i>	062293	DRAWING No		REV 7 A
4	9871	051393	SLC	APPROVED WKB	062893	EJ0826-XX		
0	4583	121887	TGN	UNLESS OTHERWISE NOTED DIMENSIONS ARE IN INCHES. TOLERANCES ARE:		PART No EJ0826-XX		SCALE NTS SHEET 1 OF 2
REV	ECN No	DATE	APP			EJ0826-XX		

CALIBRATION PROCEDURE:

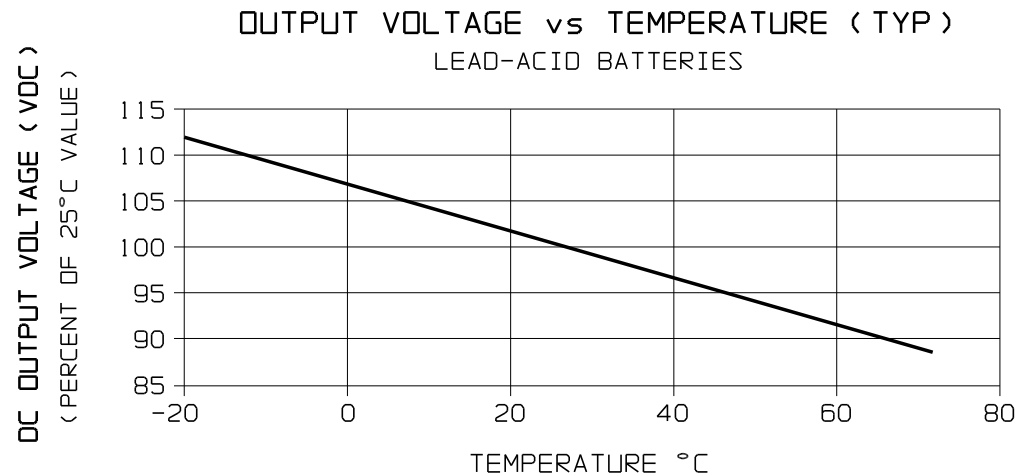
- 1) PERFORM ALL OTHER FINAL TESTS BEFORE FINAL ADJUSTMENT OF FLOAT AND EQUALIZE VOLTAGES.
- 2) ADJUST FLOAT VOLTAGE AT 50% LOAD AND NOMINAL LINE TO VALUE SPECIFIED ON ORDER (OR IN SPECIFICATION).
- 3) SET CHARGER TO EQUALIZE MODE AND ADJUST EQUALIZE VOLTAGE TO VALUE SPECIFIED ON ORDER (OR IN SPECIFICATION).
- 4) RETURN CHARGER TO FLOAT MODE. MEASURE AND RECORD AMBIENT TEMPERATURE IN °C.
- 5) REFER TO THE VOLTAGE/TEMPERATURE CURVE TO LOWER-RIGHT. ADJUST THE FLOAT VOLTAGE AT 50% LOAD AND NOMINAL LINE TO THE PROPER VALUE FOR THE AMBIENT TEMPERATURE.

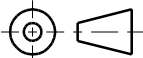
GENERAL NOTES:

- 1) THIS NETWORK REPLACES R2 IN THE SCR/SCRF SERIES FEEDBACK VOLTAGE DIVIDER.
- 2) AVERAGE TEMPERATURE COEFFICIENT:
-2.5 mV/V/°C / -3.3 mV/CELL/°F @ 2.4 VPC
- 3) REFER TO USER INSTRUCTIONS (JA5022-00) FOR ADDITIONAL INFORMATION.

NOMINAL COMPONENT VALUES

OUTPUT (VDC)	R6	R7	R8 (25°C)
12	8.7 K	11.3 K	10.0 K
24	39.2 K	22.6 K	30.0 K
48	100.0 K	40.2 K	100.0 K
130	301.0 K	110.0 K	100.0 K
260	634.0 K	200.0 K	200.0 K



 THIRD ANGLE PROJECTION		TITLE SCR/SCRF SERIES INTERNAL TEMPERATURE COMPENSATION NETWORK OPTION (PB)		
DRAWN BY	PAC			
APPROVED	WKB	062893		
UNLESS OTHERWISE NOTED DIMENSIONS ARE IN INCHES. TOLERANCES ARE:				DRAWING No EJ0826-XX
		PART No EJ0826-XX	REV 7	A
SCALE	NTS	PART No	SHEET	OF
		EJ0826-XX	2	2