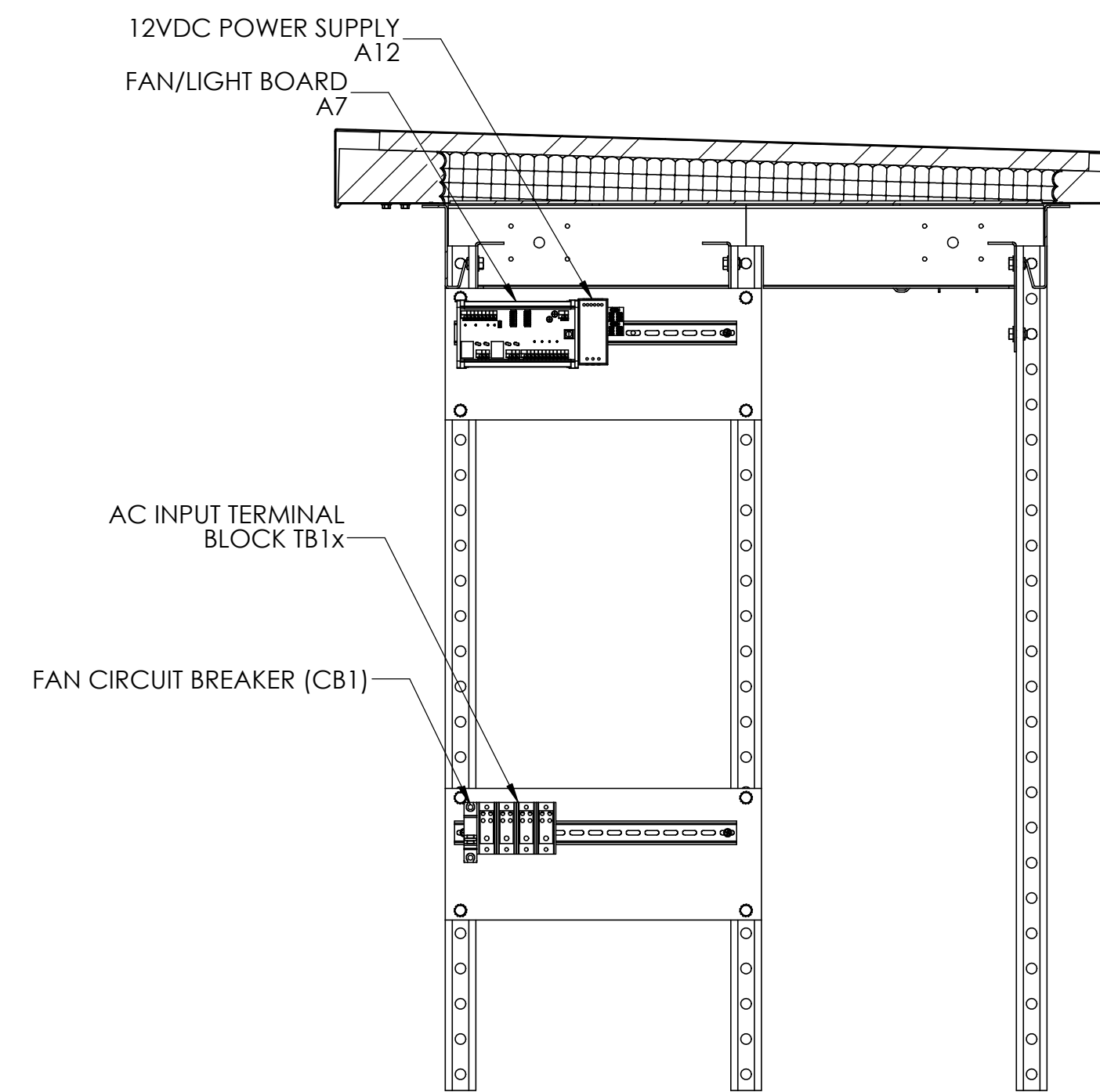
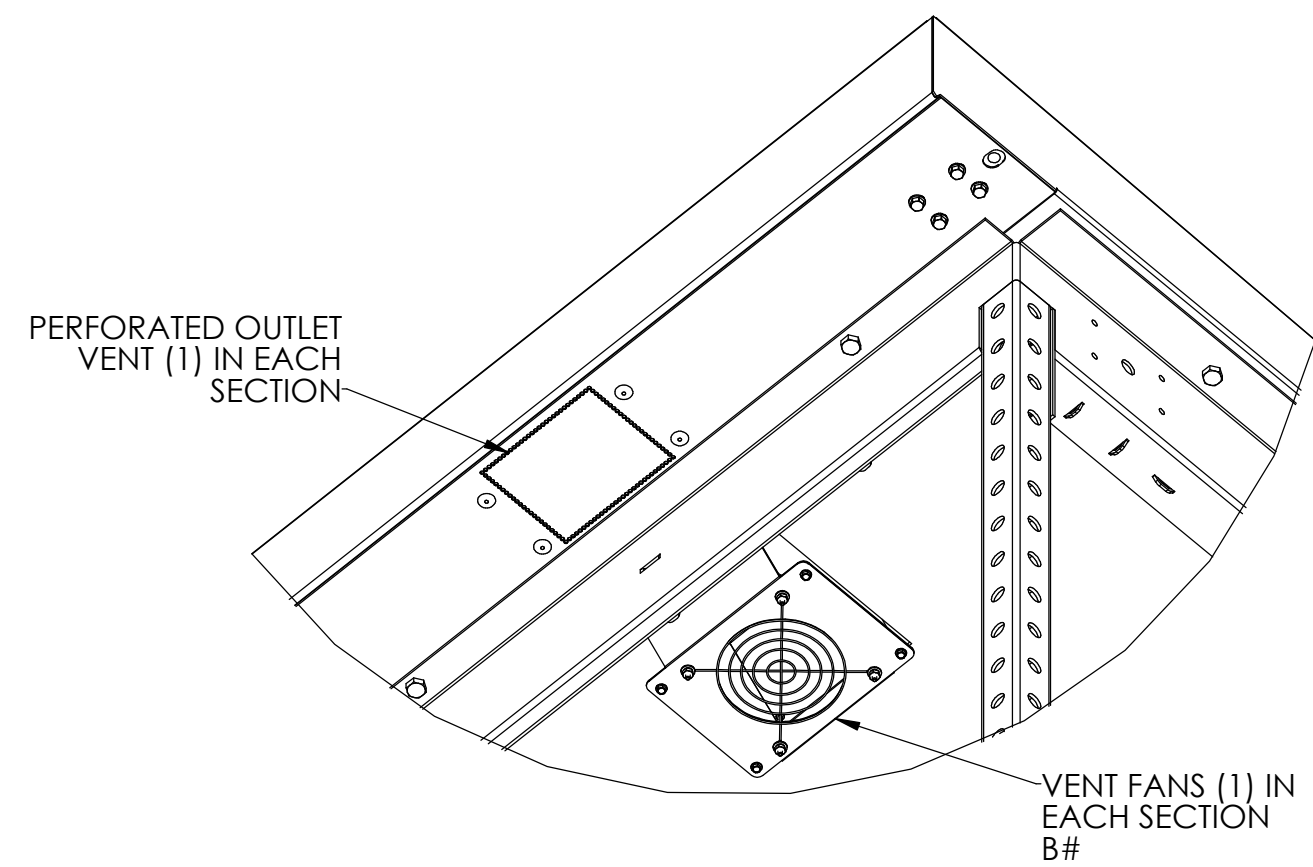
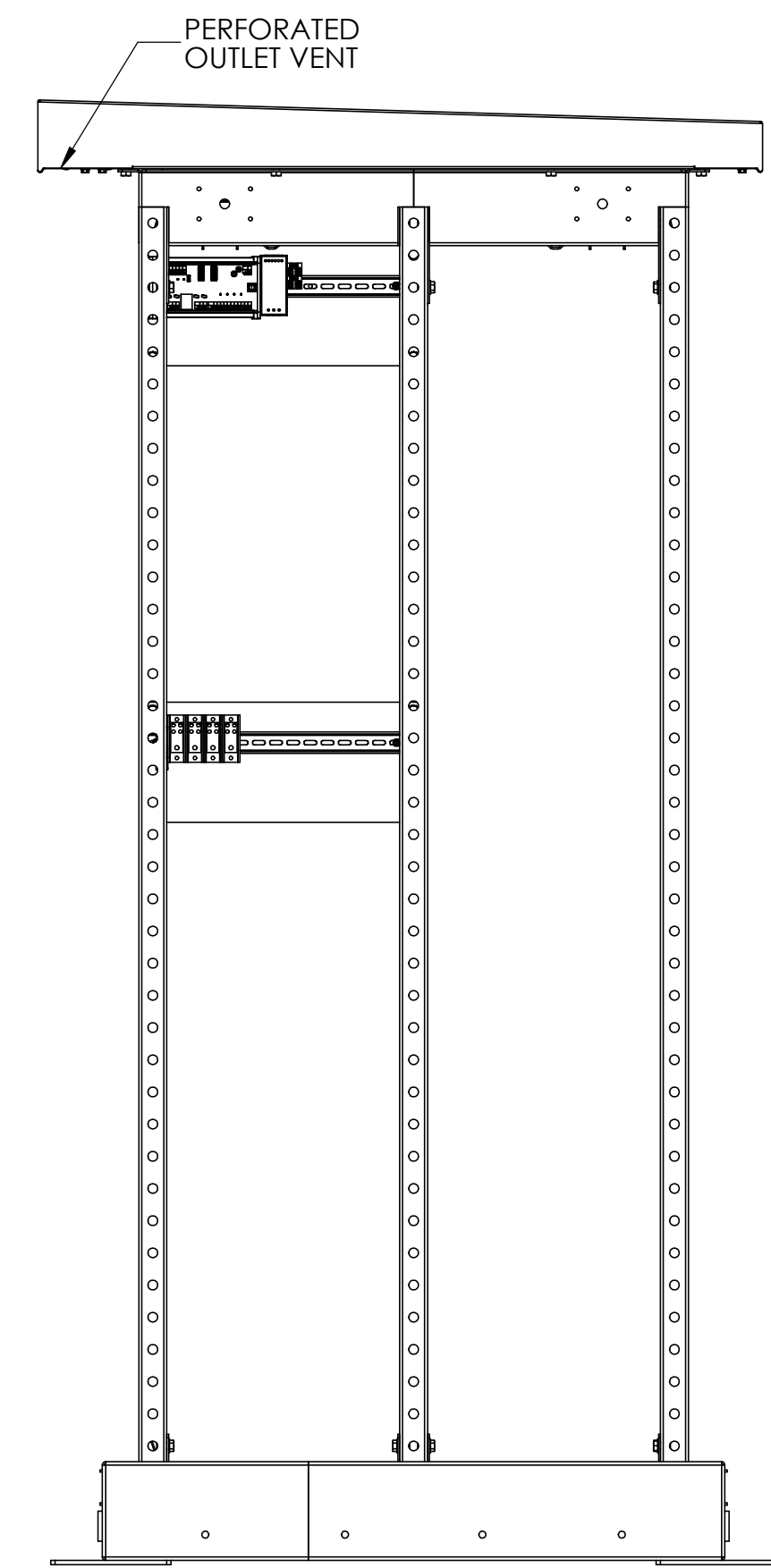
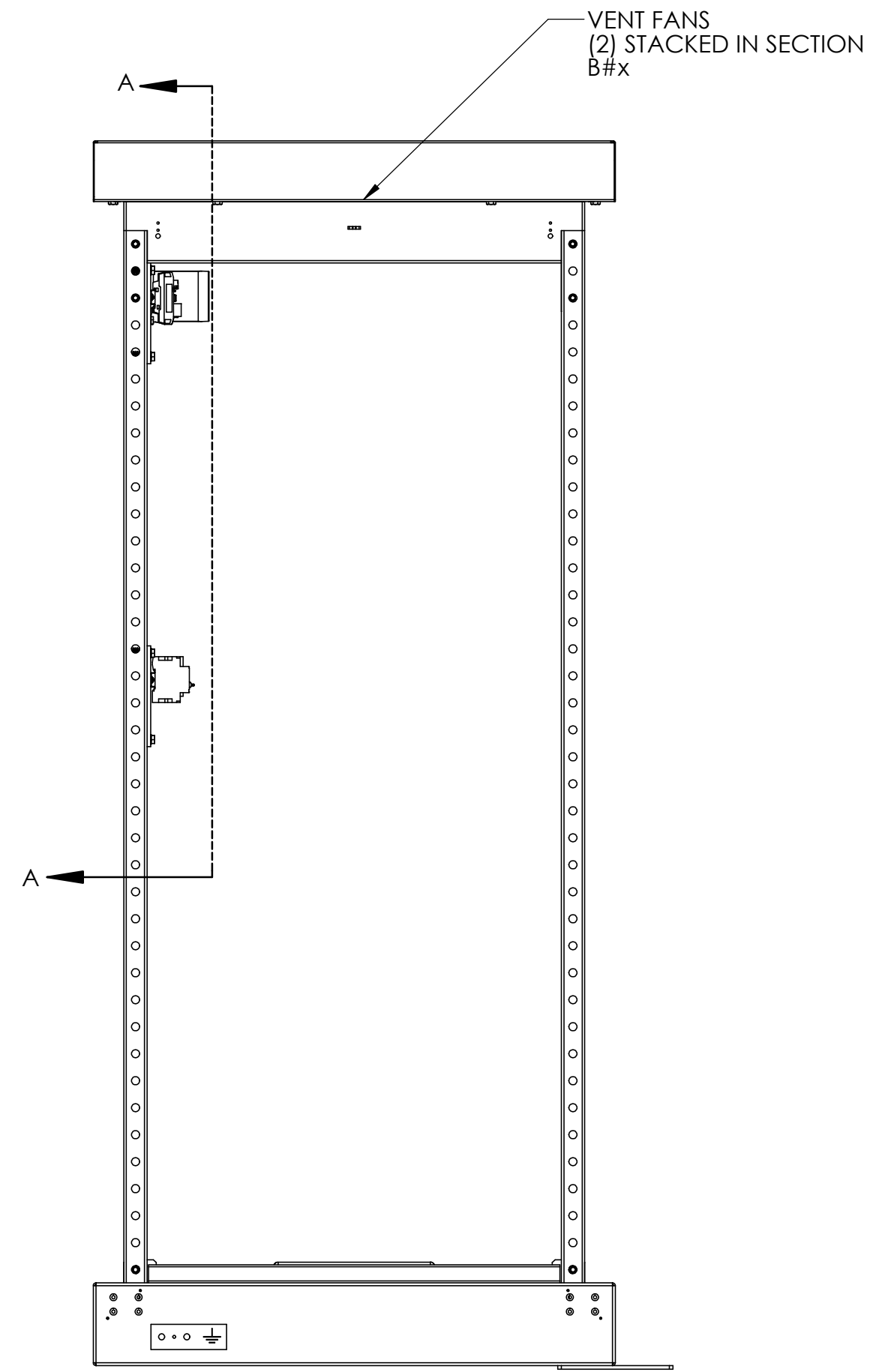
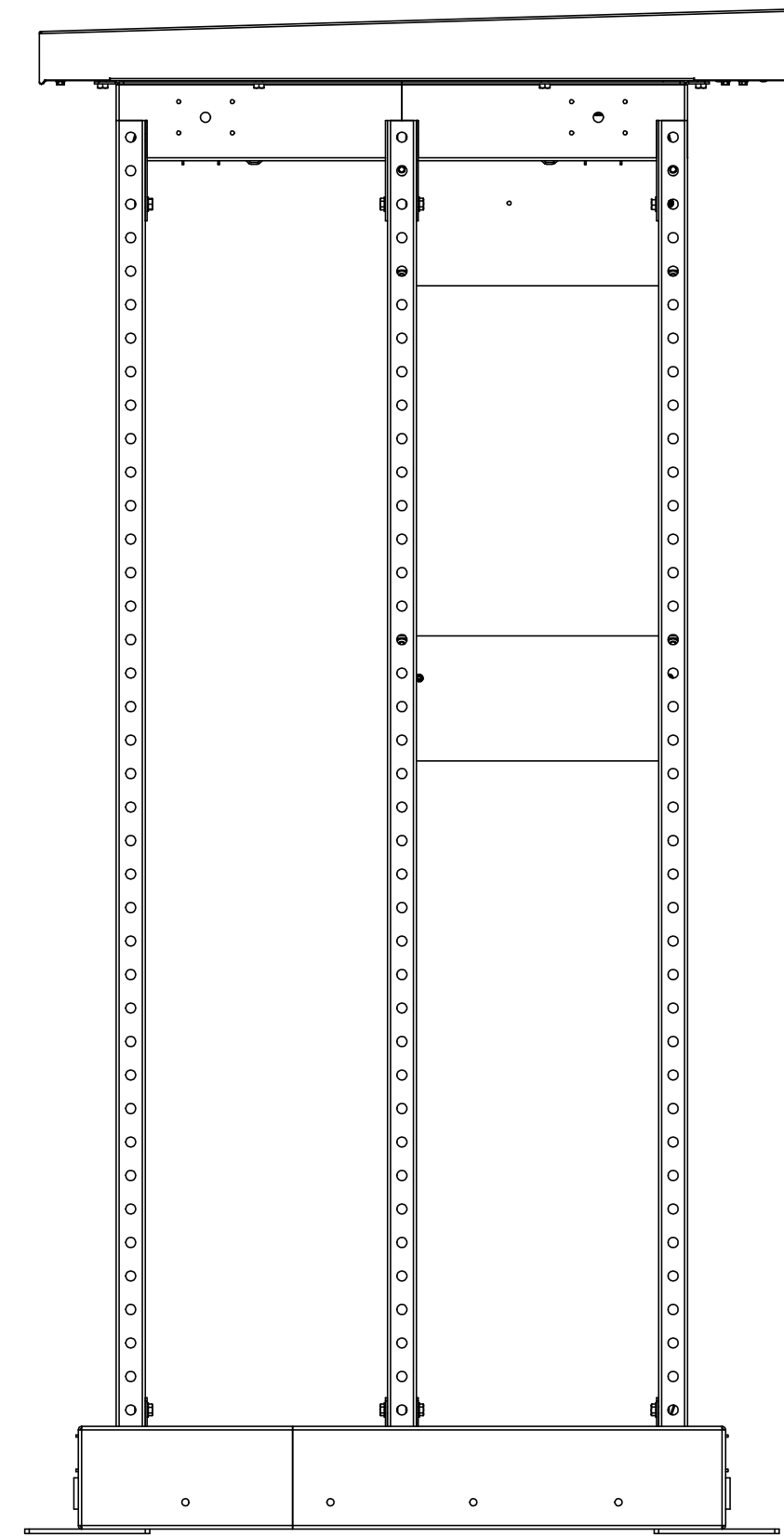


- DESIGN NOTES:
- ENCLOSURE IS A NEMA-3R TYPE CABINET WITH GASKETING AND FOAM INJECTED PANELING. FINISH IS ANSI 61 GREY POWDERCOAT.
 - HINGES MADE OF STAINLESS STEEL GRADE 316
 - CONDUIT ENTRY PROVIDED THROUGH SIDE PANEL 10.5in BY 14in GLAND PLATE AVAILABLE FOR KNOCKOUT. SEE FOUNDATION DRAWINGS (JE5276-01) FOR KNOCKOUT LOCATIONS. CONDUIT ACCESS ALSO AVAILABLE FROM UNDERNEATH CABINET.
 - LOCATE UNIT ONTO A PERMANENT, FLAT, AND LEVELED SURFACE, PREFERABLY CONCRETE OR OTHER FIREPROOF MATERIAL. SURFACE MUST BE CAPABLE OF SUPPORTING WEIGHT OF COMPLETE SYSTEM AND INSTALLED COMPONENTS. SEE FOUNDATION DRAWING (JE5276-01) FOR LOADING INFORMATION.
 - VENTILATION AND THERMAL MANAGEMENT OF BATTERIES PER IEEE 1635. SEISMIC CERTIFICATION PER IEEE 693.
 - THE WEIGHT OF THE CONSOLE WITHOUT BATTERIES IS 477lb [216kg]
 - FOR LIFTING, USE OPTIONAL STRAPPING SYSTEM SEE E15196-01.

C:\Hindle Vault\Custom Drawings\CONSOLES 2.1\Standard Drawings\#-01

REV DRN BY CHK BY APP BY DATE B KJB KMW RCF 6/12/2023 DESCRIPTION UPDATED TO NEW DESIGN.	DRN BY DATE KJB 10/18/2021 CHK BY DATE CMF 10/18/2021 APP BY DATE RCF 10/18/2021	TITLE EPIC SERIES 2.0 CONSOLE OUTLINE: NEMA 3R STYLE 5063 ENCL SALES ORDER No. N/A
PROPERTY AND CONFIDENTIAL NOTICE ANY REPRODUCTION, PARTIAL OR AS A WHOLE OF THIS DOCUMENT WITHOUT THE WRITTEN PERMISSION OF HINDLE POWER, INC IS STRICTLY PROHIBITED.		UNLESS OTHERWISE SPECIFIED: ALL DIMENSIONS FOLLOW THE ASH 110 FOR (INCHES, POUNDS & SECONDS) TOLERANCES ARE: FRACTIONAL DEC: ± 0.125, ANG: ± 2°
D	SCALE DWG No. 1:10 JE5269-01	REV SHEET B 1 OF 1

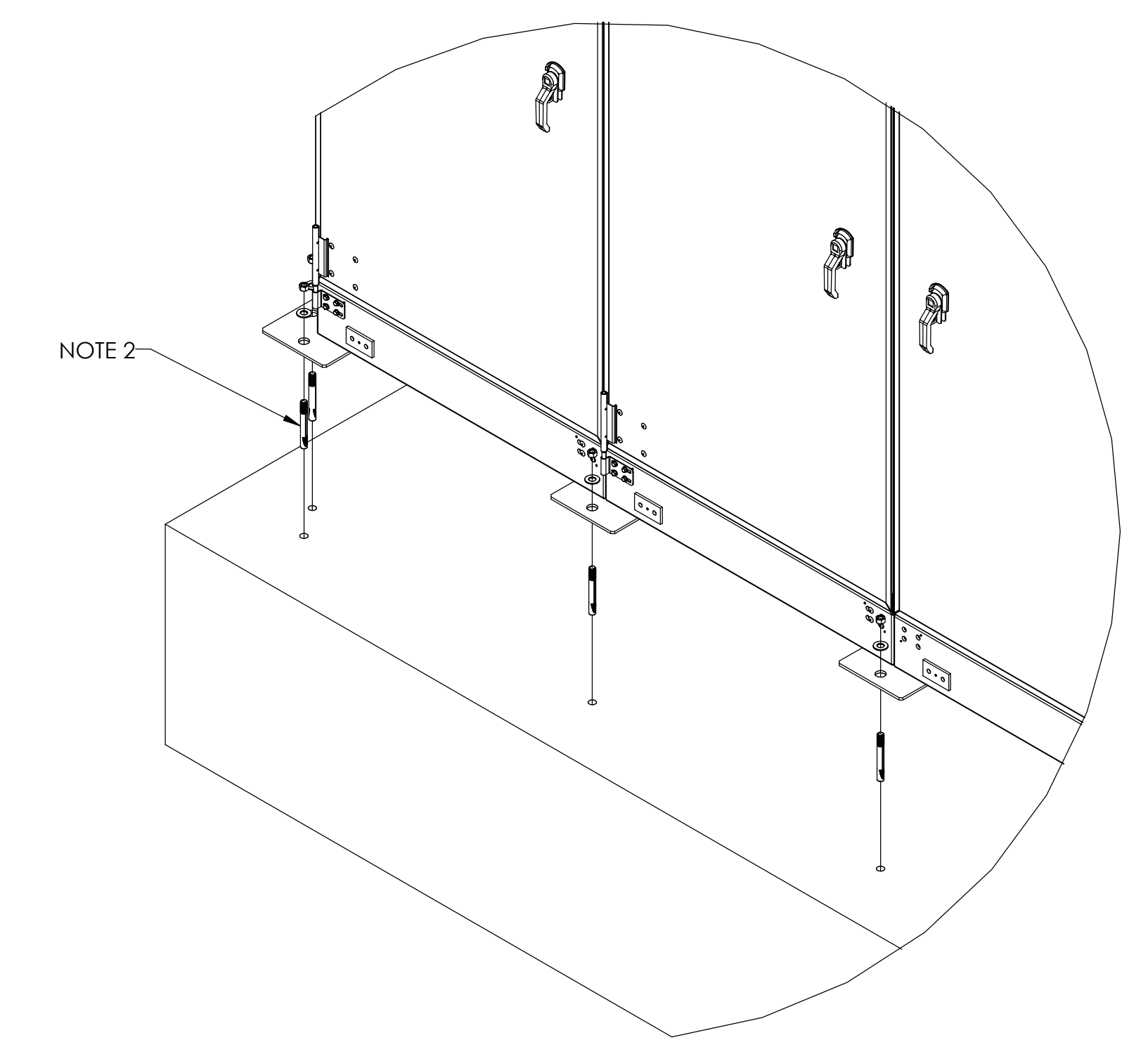
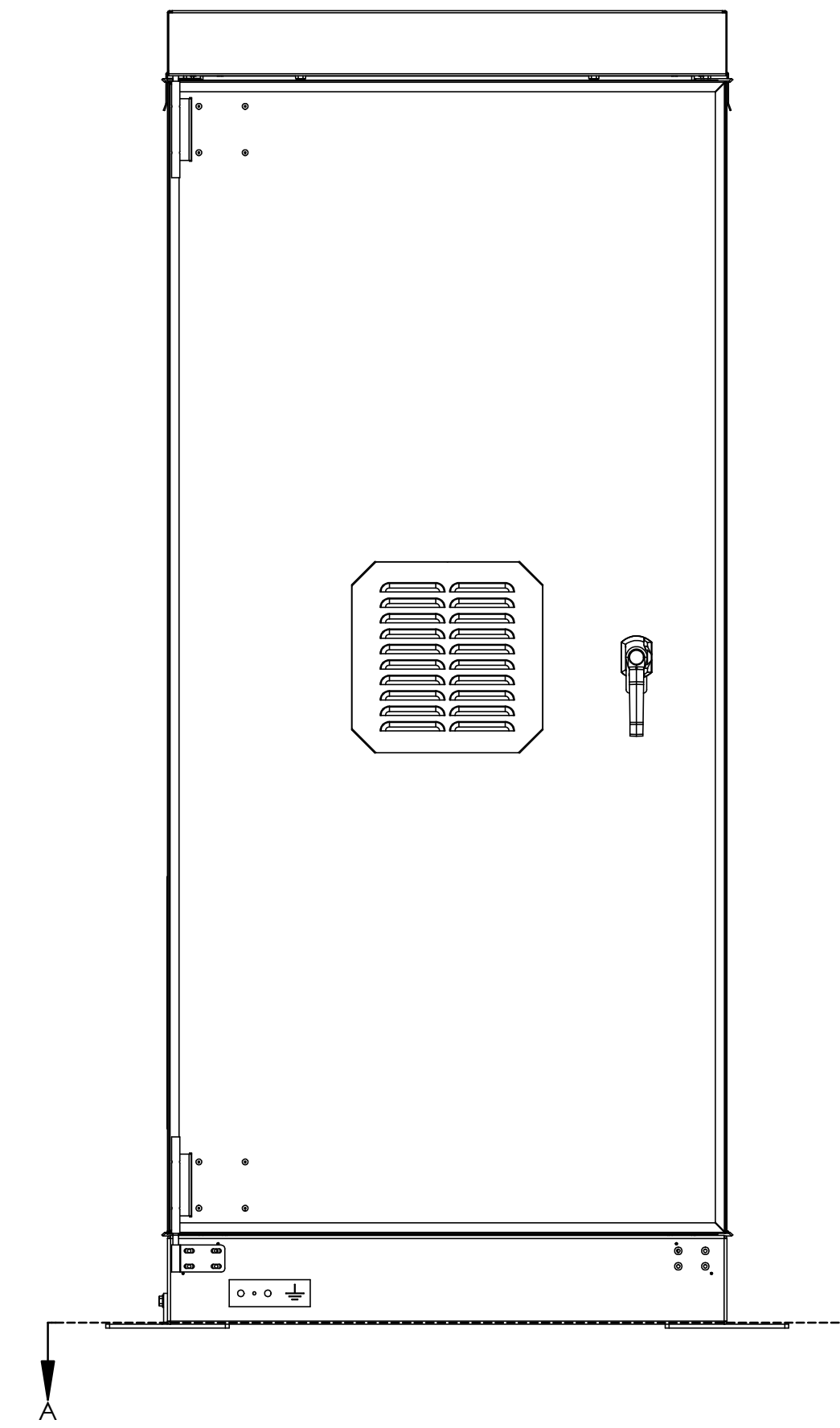
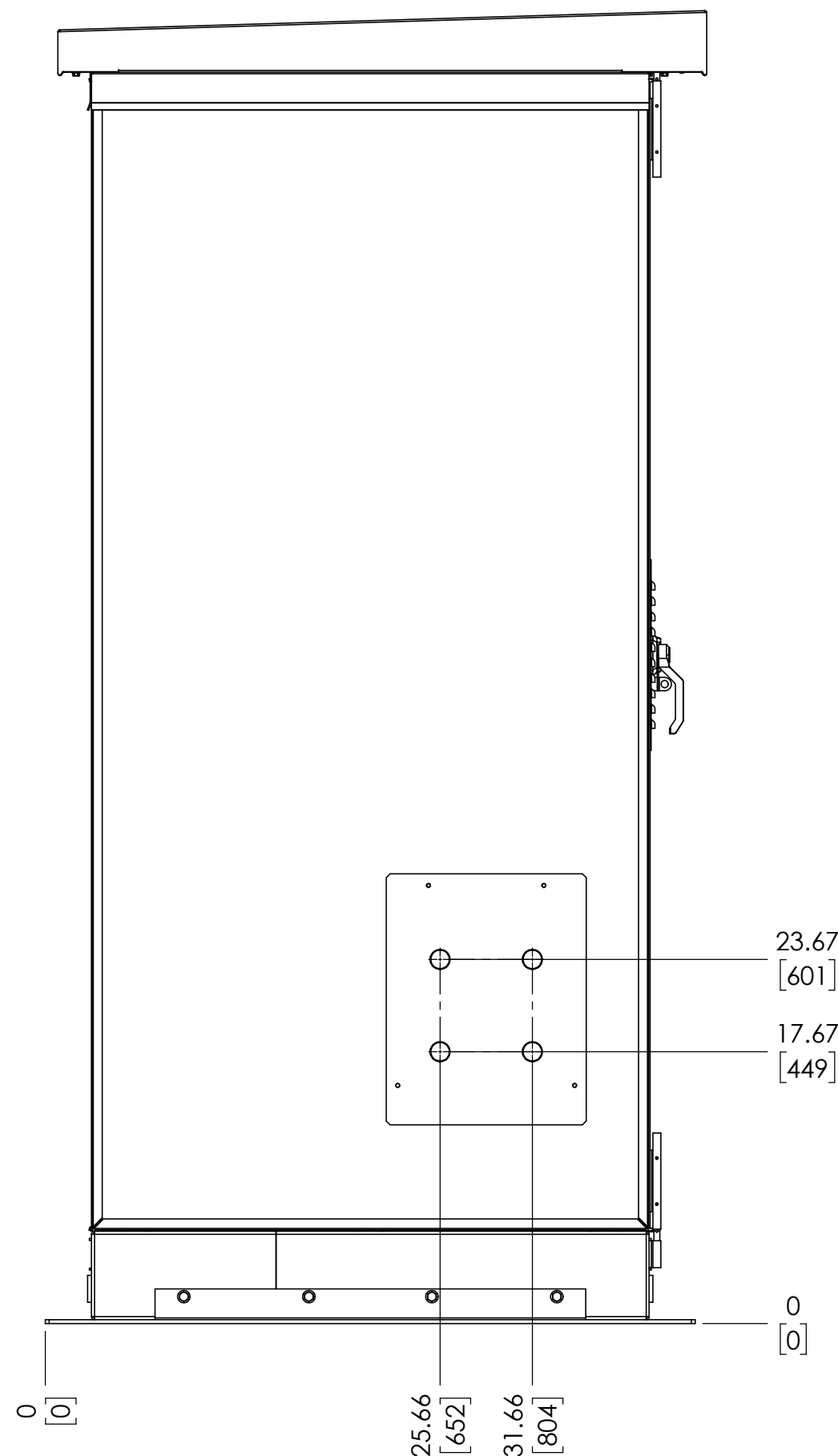


SECTION A-A
SCALE 1 : 8

1. TO PROVIDE A CLEAR VIEW OF THE CONSOLE INTERNAL COMPONENTS, THE FOLLOWING ITEMS ARE NOT SHOWN:
 - FRONT DOORS W/ EYE WASH
 - REAR PANELS/DOORS
 - LEFT AND RIGHT SIDE PANELS
2. DO NOT LIFT, PUSH OR RELOCATE THE EPIC CONSOLE WITH BATTERIES INSTALLED WITHIN ENCLOSURE.
3. BATTERY TYPE: ## (# JARS)

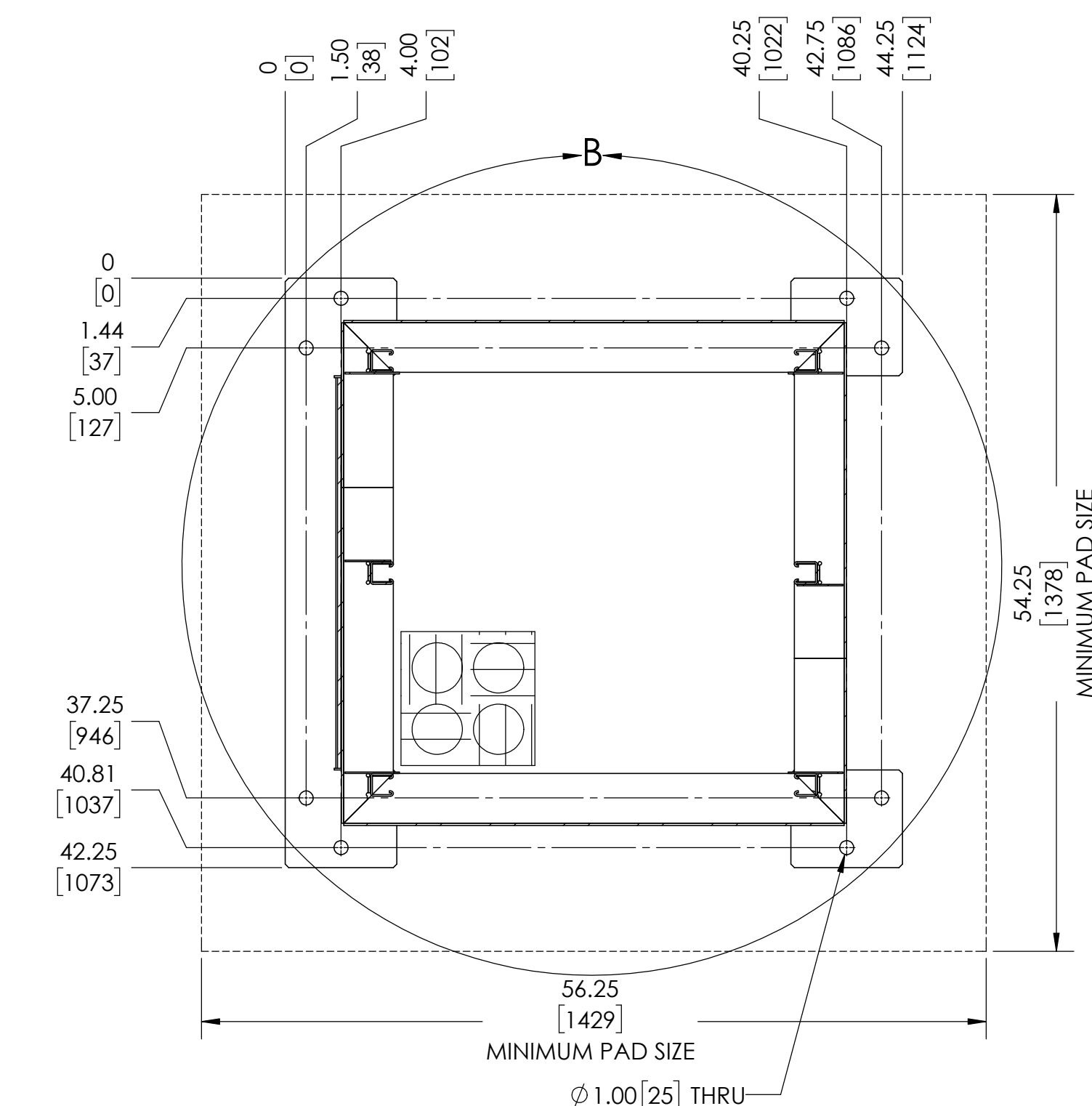
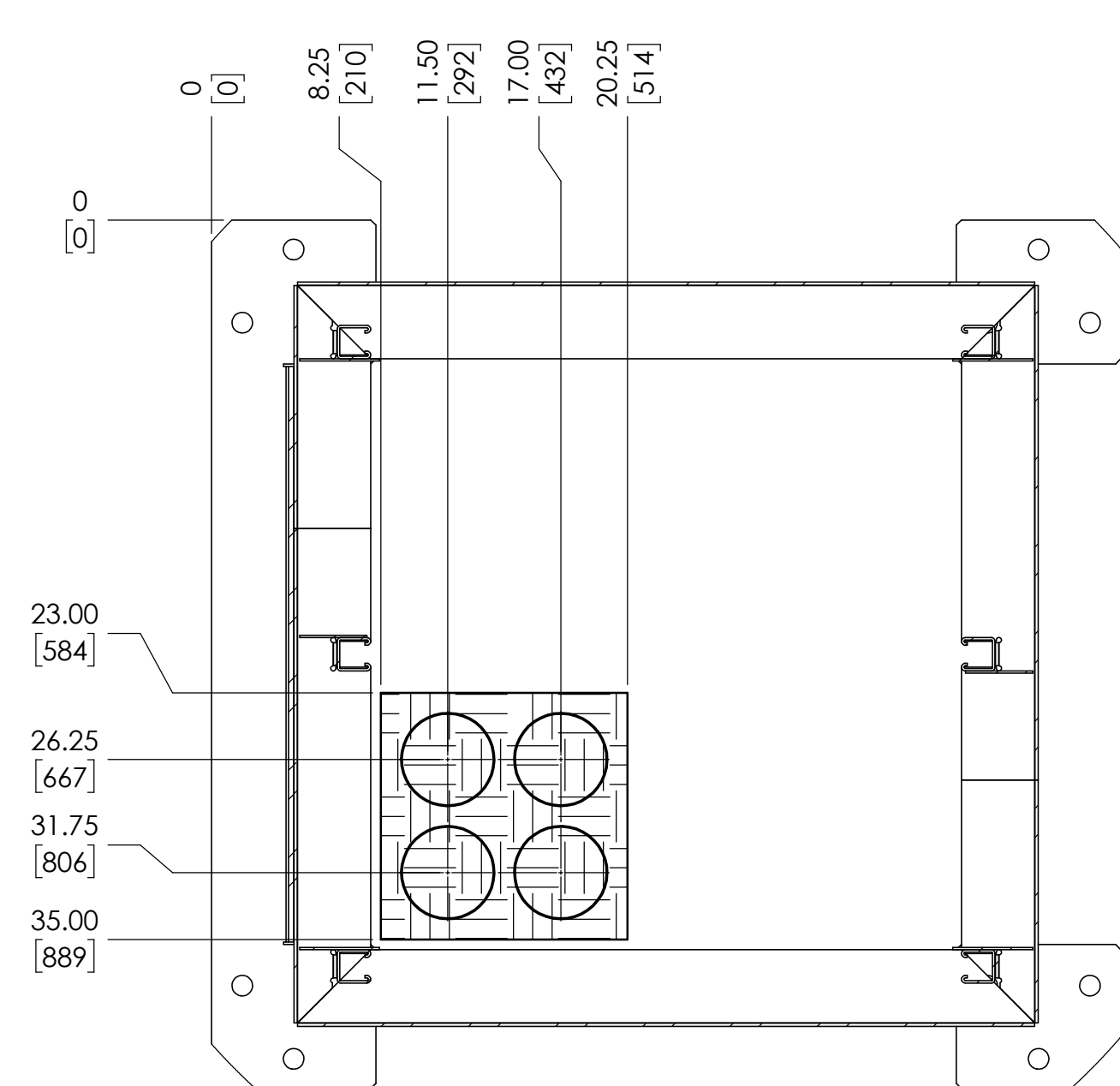
C:\Hindle Vault\Custom Drawings\CONSOLES 2.1\Standard Drawings\#01

REV	DRN BY	CHK BY	APP BY	DATE	DRN BY	DATE		HINDLEPOWER <small>10750 1st Street Dallas, TX 75243 Tel: (214) 343-1000 www.hindlepower.com</small>	
B	KJB	KMW	RCF	6/12/2023	KJB	10/18/2021			
DESCRIPTION					CHK BY	DATE	TITLE EPIC SERIES 2.0 CONSOLE INTERNAL LAYOUT: 0 ELEC. / 1 BATT. SALES ORDER No. N/A		
UPDATED TO NEW DESIGN.					CMF	10/18/2021			
APP BY					DATE	<small>UNLESS OTHERWISE SPECIFIED ALL DIMENSIONS FOLLOW THE AIAA 111.18.1.0 (INCHES-POUNDS & SECONDS) FOR FRANCES & ERIC, 11/84. SEC. 2.015, 2ND EDITION</small>			
RCF					10/18/2021				
PROPERTY AND CONFIDENTIAL NOTICE									
<small>ANY REPRODUCTION, PARTIAL OR AS A WHOLE OF THIS DOCUMENT WITHOUT THE WRITTEN PERMISSION OF HINDLEPOWER, INC. IS STRICTLY PROHIBITED.</small>									
SCALE		DWG No.		REV	SHEET				
D		1:10		JE5270-01		B		1 OF 1	



A-A
MOUNTING DIMENSIONS

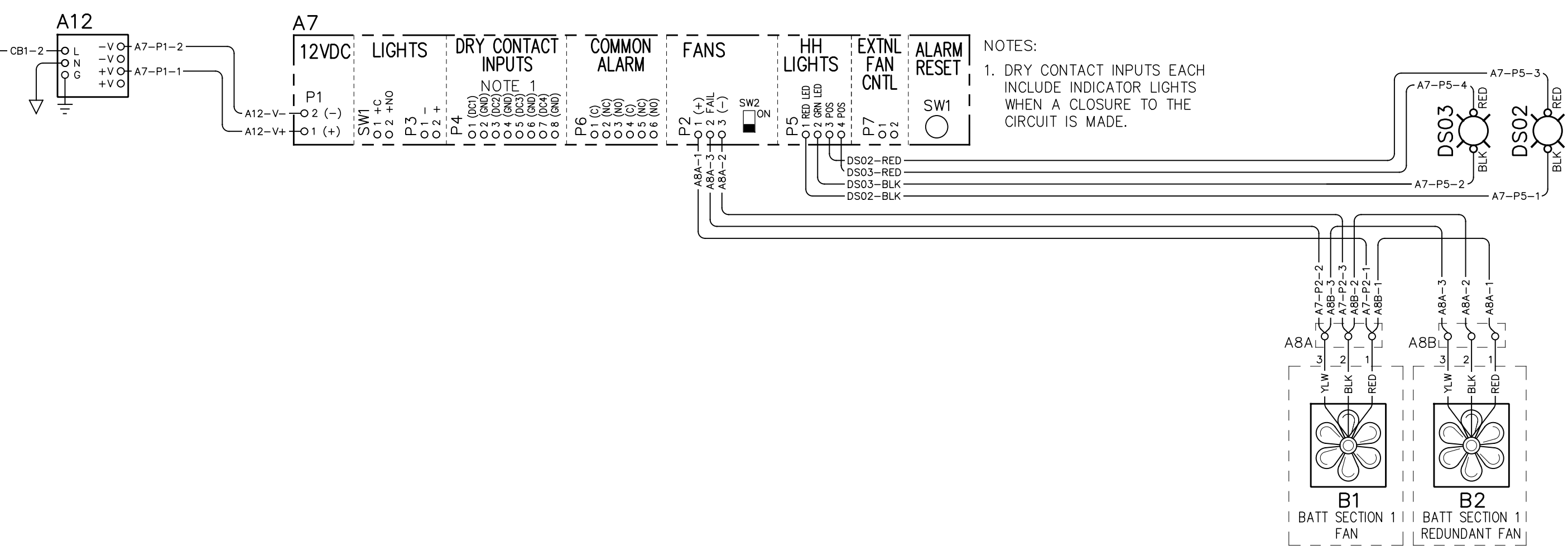
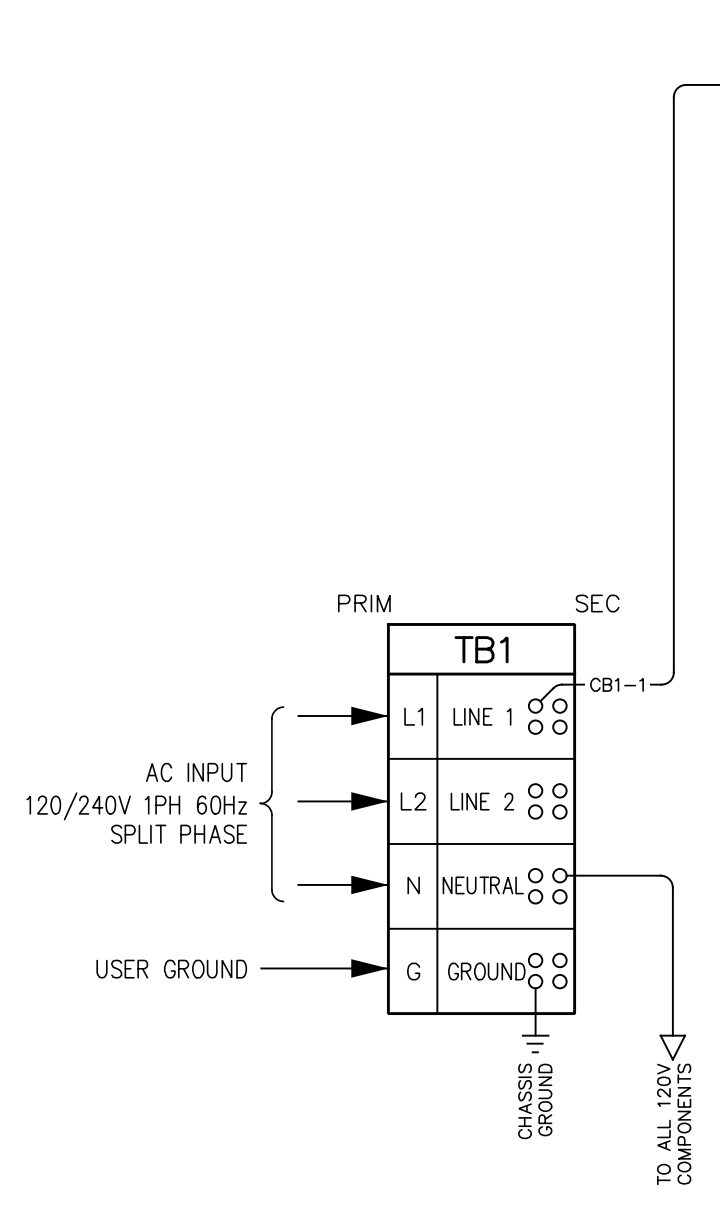
STUB-UP LOCATIONS
DETAIL B
SCALE 1 : 8



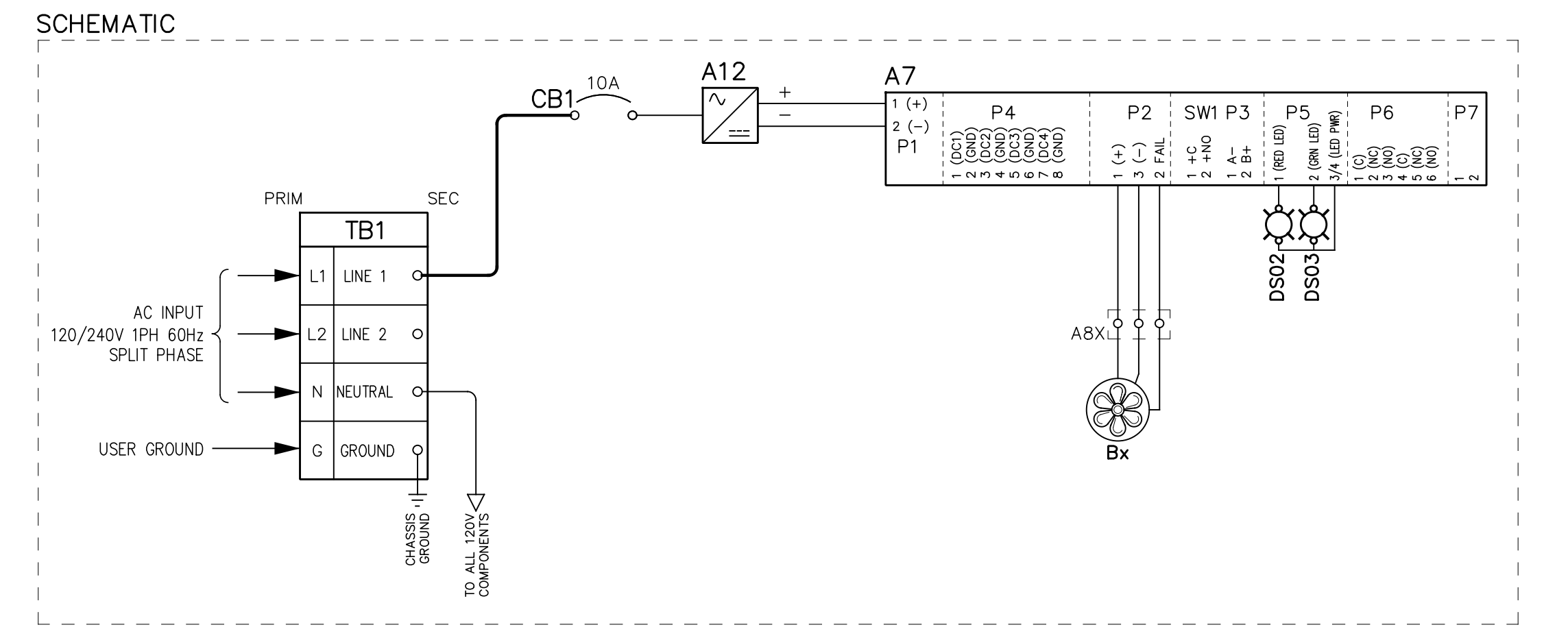
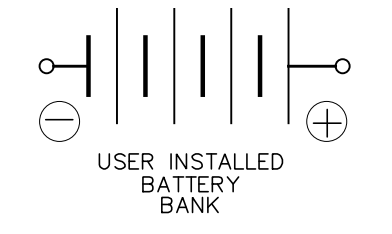
- NOTES:
< PARA >
1. MOUNTING DIMENSIONS SHOWN ON DRAWING ARE FINAL. WE RECOMMEND PLACING CONSOLE THEN DRILLING FOR MOUNTING ANCHORS.
 2. ANCHOR BOLTS ARE TO BE HILTI M12 HDA-TR STAINLESS STEEL UNDERCUT (OR EQUIVALENT). HOLE DEPTH TO BE MINIMUM OF 5.3" [135mm], PAD DEPTH TO BE MINIMUM OF 8.0" [203mm]
 3. CONCRETE PAD TO EXTEND A MINIMUM OF 6" [153mm] FROM EDGE OF CABINET ON ALL SIDES. SEE MOUNTING DIMENSIONS BELOW. THE WEIGHT OF THE CONSOLE WITH BATTERIES (SPECIFIED IN PURCHASE ORDER) IS 473lb [215kg]
 4. CONCRETE PAD TO BE 4000 psi OR GREATER.
 5. ELECTRICAL CONDUIT MAY ENTER FROM UNDERNEATH CABINET, BUT ONLY THROUGH STUB-UP LOCATIONS SHOWN IN DETAIL B.
 6. CONDUIT ENTRY PROVIDED THROUGH SIDE PANEL 10.5in BY 14in GLAND PLATE AVAILABLE FOR KNOCKOUT. KNOCKOUTS MAY NOT BE VISIBLE, USE DIMENSIONS TO VERIFY BREAKAWAY POINTS.

C:\Hindle Vault\Custom Drawings\CONSOLES 2.1\Standard Drawings\#-01

REV DRN BY CHK BY APP BY DATE	DRN BY DATE		HINDLEPOWER FOUNDATION DRAWINGS SALES ORDER No. N/A
B KJB KMW RCF 6/12/2023	KJB 10/18/2021		
DESCRIPTION	CHK BY DATE	TITLE	
UPDATED TO NEW DESIGN.	CMF 10/18/2021	EPIC SERIES 2.0 CONSOLE	
APP BY DATE	RCF 10/18/2021	SALES ORDER No. N/A	
<small>UNLESS OTHERWISE SPECIFIED ALL DIMENSIONS FOLLOW THE (INCHES-POUNDS & SECONDS) TOLERANCES ARE: FRACTIONS DEC: ± 0.125, ANG: ± 2°</small>		<small>PROPERTY AND CONFIDENTIAL NOTICE ANY REPRODUCTION, PARTIAL OR AS A WHOLE OF THIS DOCUMENT WITHOUT THE WRITTEN PERMISSION OF HINDLE POWER, INC IS STRICTLY PROHIBITED.</small>	
<small>SCALE: 1:10</small>		D	SHEET 1 OF 1



NOTES:
1. DRY CONTACT INPUTS EACH INCLUDE INDICATOR LIGHTS WHEN A CLOSURE TO THE CIRCUIT IS MADE.



I/O TERMINAL	DESCRIPTION - TYPE	CONNECTION
TB1 PRIM	L1, L2, AC INPUT / USER NTRL, GND TERMINALS - CU-ALUMINUM COMP LUG	(1) 2/0-#14 AWG
TB1 SEC	LINE 1, LINE 2 AC INPUT / USER NTRL, GND TERMINALS - CU-ALUMINUM COMP LUG	(4) #4-#14 AWG

EPIC SERIES COMPONENTS		LEGEND FOR EPIC LINE	
SYMBOL	DESCRIPTION	SYMBOL	DESCRIPTION
A7	FAN/LIGHT BOARD	○	DEVICE TERMINAL
A8x	FAN BOARD(S)	◊	TERMINAL BLOCK POINT IN TRANSFORMER
A12	12VDC POWER SUPPLY	◊	TERMINAL BLOCK POINT FOR SCADA
Bx	BATTERY SECTION VENT FANS	◊	TERMINAL BLOCK POINT FOR COMMUNICATIONS
CB1	CIRCUIT BREAKER FOR A12 P/S	◊	TERMINAL BLOCK POINT IN POWER CIRCUIT BREAKER
DS02	RED LED	▲	TERMINAL IN A.C. OR D.C. PANELBOARD
DS03	GREEN LED	—	SHIPPED WITH WIRING INSTALLED
TB1	AC INPUT TERMINAL BLOCK	- - -	WIRING TO BE INSTALLED

REV: B	DRN: KJB	CHK: CMF	APP: RCF	DATE: 10/18/21	DATE: 10/18/21	DATE: 10/18/21	DATE: 10/18/21
DESCRIPTION: STANDARD DRAWINGS				TITLE: EPIC SERIES 2.0 CONSOLE CONNECTION DIAGRAM: 0 ELEC. SECTION 1 BATT SECTION SALES ORDER NO. N/A			
PROPERTY AND CONFIDENTIAL NOTICE: ANY REPRODUCTION, PARTIAL OR AS A RESULT OF THIS DOCUMENT WITHOUT THE WRITTEN PERMISSION OF HANDLE POWER, INC. IS STRICTLY PROHIBITED.				HANDLE POWER, INC. 1075 Saint John Street, Easton, PA 18042-6661, PH 610-330-9000, FAX 610-330-8810, www.handlepowerinc.com			
D		SCALE: NTS		DWG NO: JE5272-01		REV: B SHEET: 1 OF 1	