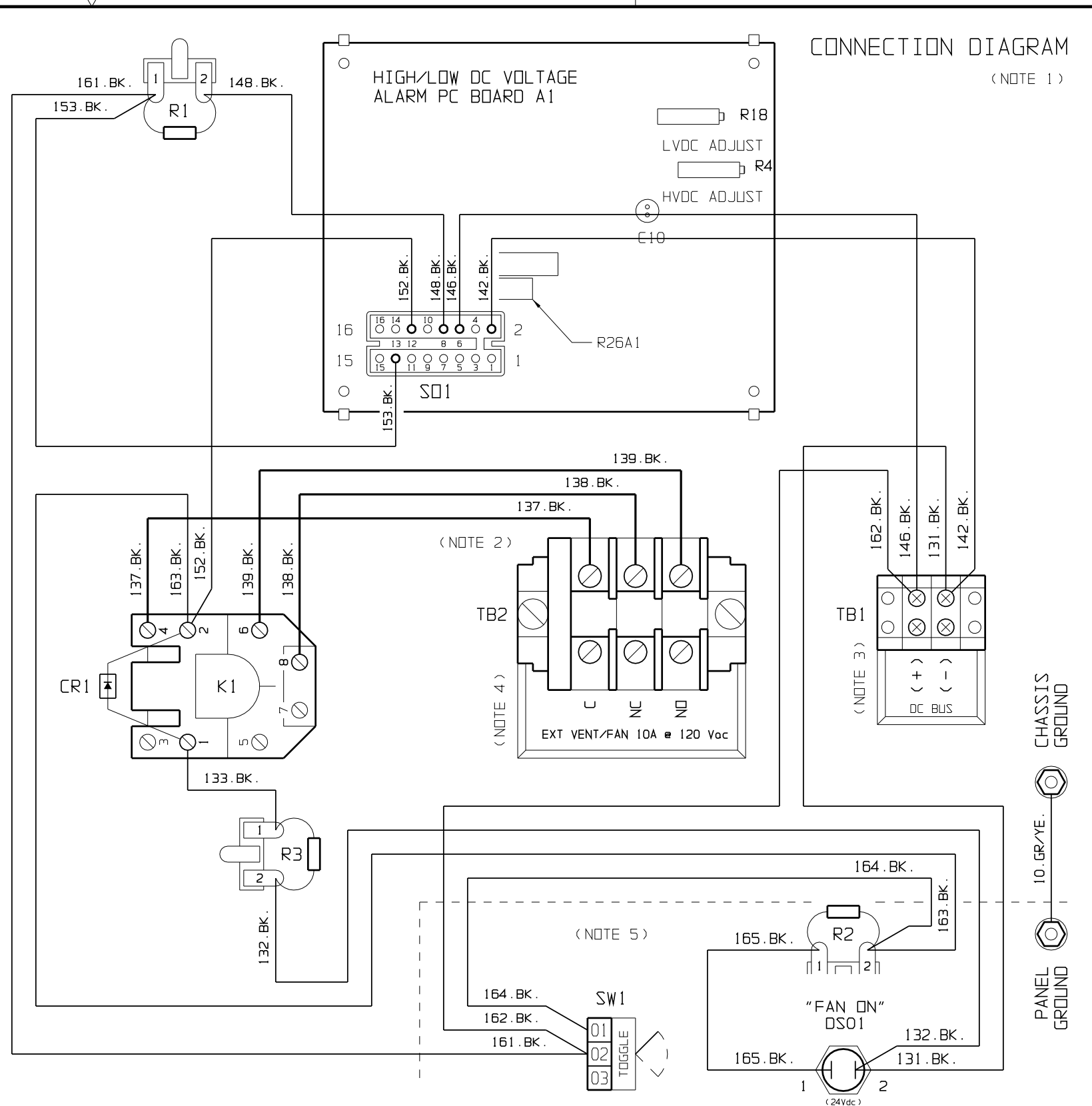


| SYM | STANDARD COMPONENT DESCRIPTION |
|-------|---------------------------------|
| A1 | VOLTAGE SENSE CTRL PC BOARD |
| R4 | PCB (A1) HIGH ADJ POTENTIOMETER |
| R18 | PCB (A1) LOW ADJ POTENTIOMETER |
| R26A1 | PCB (A1) VDC RATING RESISTOR |
| SO1 | PCB (A1) WIRING SOCKET |
| CR1 | RELAY (K1) PROTECTION DIODE |
| DSO1 | VENT/FAN ON (GREEN) IND LIGHT |
| K1 | POWERED (10A) DPDT RELAY |
| R1 | PCB (A1) P/S BALLAST RESISTOR |
| R2 | IND (DSO1) 48V P/S BALLAST RES |
| R3 | EQUALIZE VOLTAGE DROP RESISTOR |
| SW1 | MANUAL (ON/OFF) TOGGLE SWITCH |
| TB1 | DC BUS INPUT TERMINAL BLOCK |
| TB2 | VENT/FAN CONTACT TERMINAL BLOCK |

NOTES:

- COMPONENTS ARE CONNECTED WITH FLAME-RETARDANT SWITCHBOARD INSULATION SYSTEM (SIS) TYPE WIRING, IDENTIFIED ON EACH END WITH NUMBER-CODED MARKERS. GROUND WIRES ARE GREEN WITH YELLOW STRIPE.
- POWER WIRES # 137, 138 & 139 ARE #12 AWG ALL OTHER SIGNAL WIRING IS #18 AWG
- TB1 (DC+/-) TERMINAL BLOCK IS MOLDED PHENOLIC BARRIER TYPE WITH 6-32 COMPRESSION SCREWS, ACCEPTING RING OR SPADE LUGS FOR #22-16 AWG WIRE.
- TB2 (VENT/FAN) TERMINAL BLOCK IS NYLON SECTIONAL TYPE WITH TUBULAR COMPRESSION SCREWS, ACCEPTING #18-8 AWG WIRE.
- FRONT-MOUNTED COMPONENTS (DSO1, R2, SW1 & GROUND STUD) DEPICTED IN "SERVICE MODE" WITH HINGED PANEL SWUNG OPEN 180°.
- VENT/FAN CONTROL ASSEMBLY IS NOT A UL, CSA, CE, OR NRTL LISTED UNIT.
- SEE JA5052-10 FOR INSTALLATION & OPERATING INSTRUCTIONS.



| REV | ECN No | DATE | THIRD ANGLE PROJECTION | TITLE | DRAWING No | REV | SHEET | OF |
|-------|--------|---------|--|---|------------|-----|-------|----|
| C | -N/A- | 071324 | DRAWN BY MCR 031920 | EXTERNAL VENT/FAN CTRL ASSY (EJ5017-35) | JE5120-35 | C | 1 | 1 |
| B | -N/A- | 111020 | ELECTRONIC APPROVAL SIGNATURES MAINTAINED BY MFG ECN LOG | SCHMATIC / CONN DIAGRAM: 20Aac / 48Vdc | | | | |
| A | -N/A- | 031920 | UNLESS OTHERWISE NOTED DIMENSIONS ARE IN INCHES. TOLERANCES ARE: | | | | | |
| SCALE | NTS | PART No | JE5120-35 | SHEET | 1 | OF | 1 | |