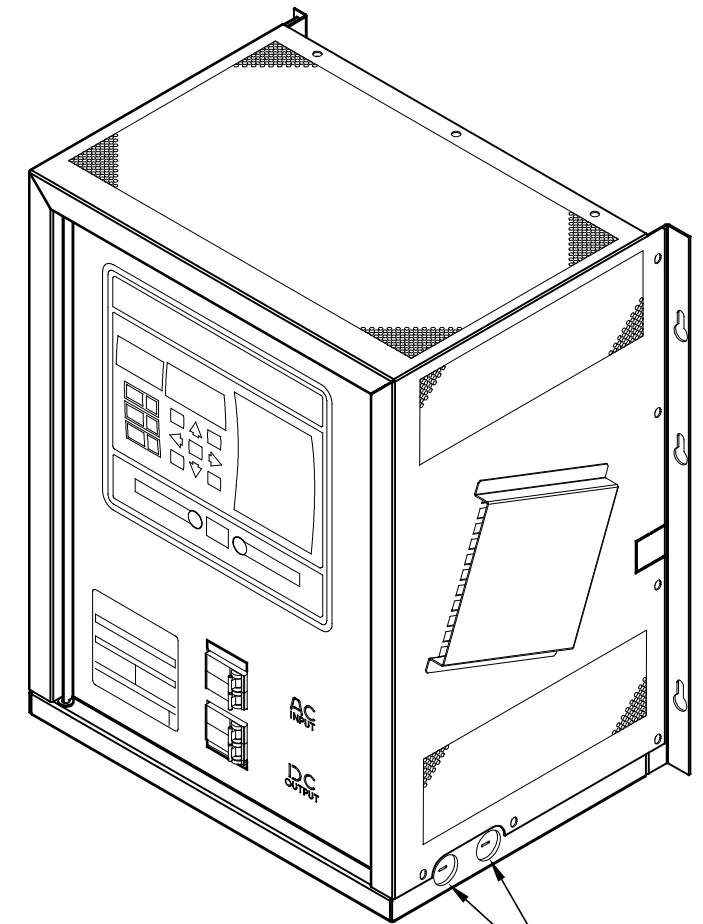
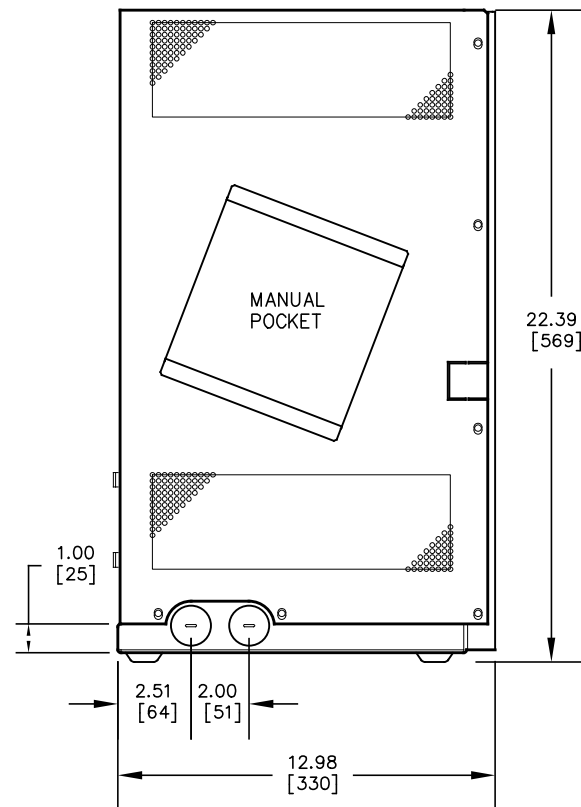
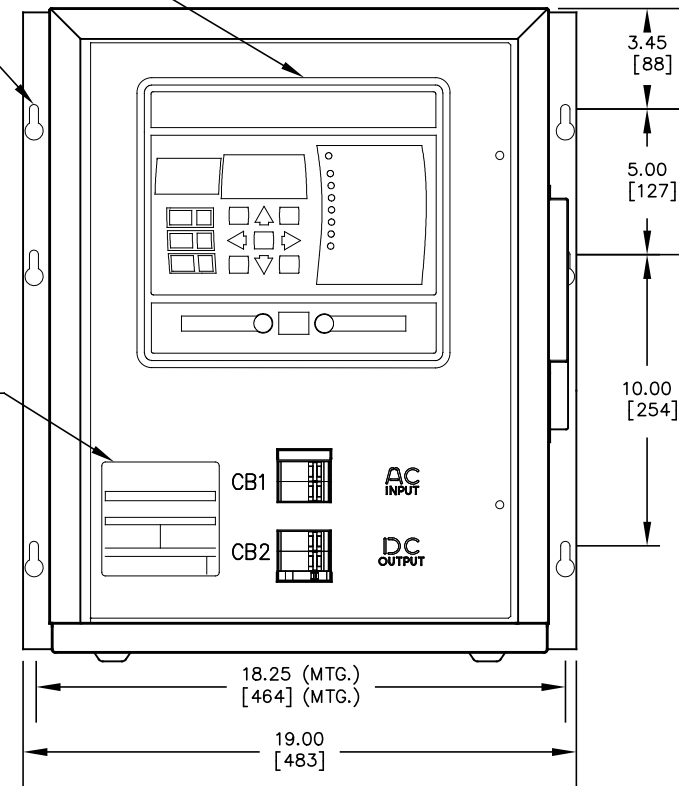


SEE DRAWING
JE5253-01

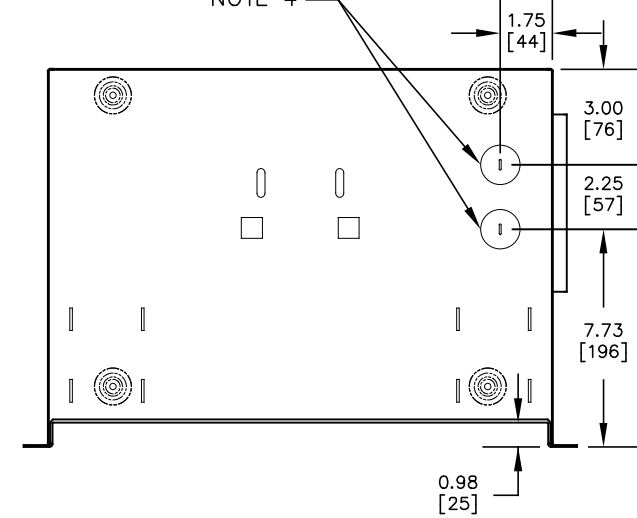
NOTE 3

NOTE 5



NOTE 4

NOTE 4



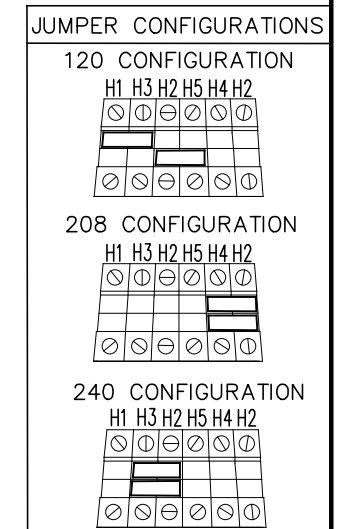
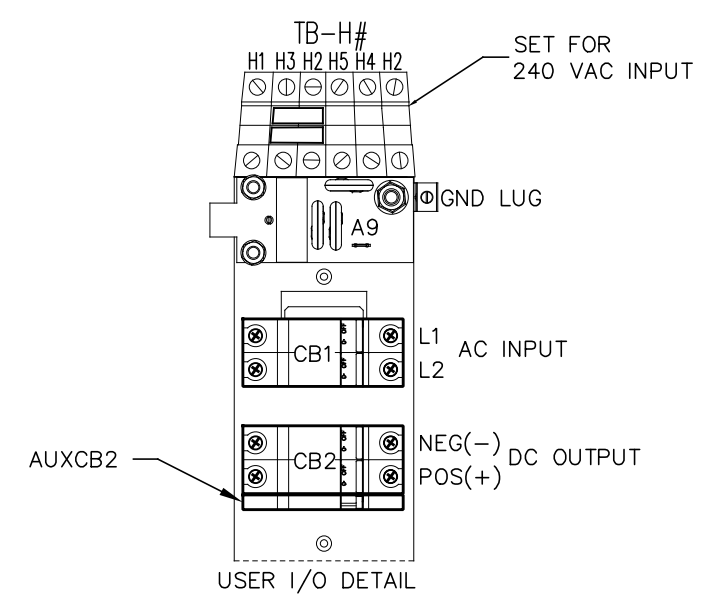
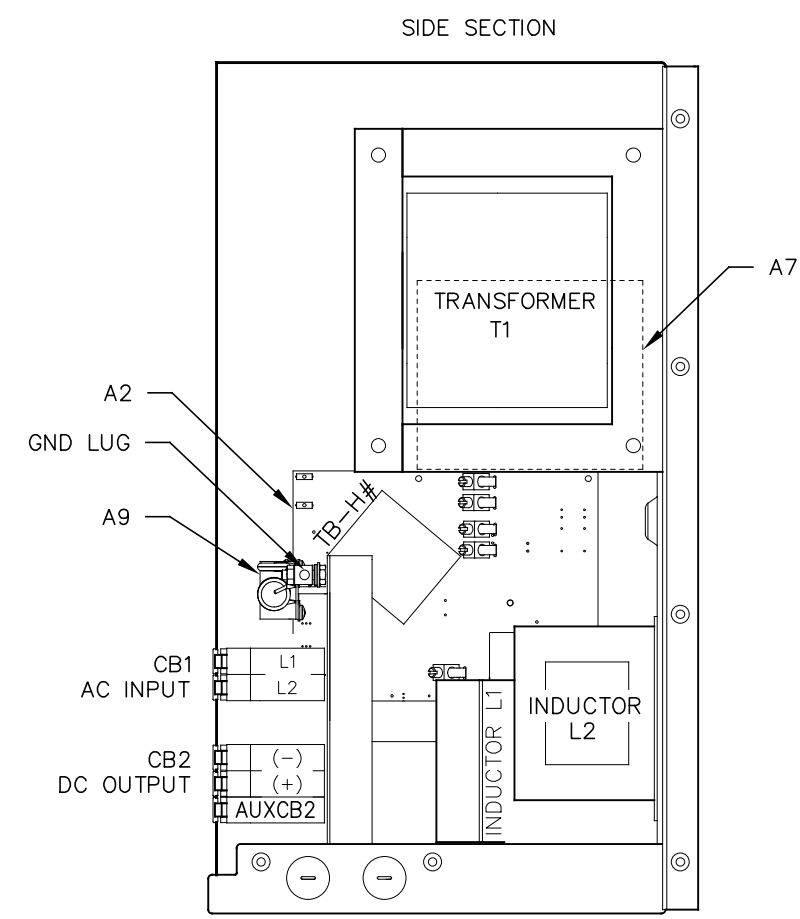
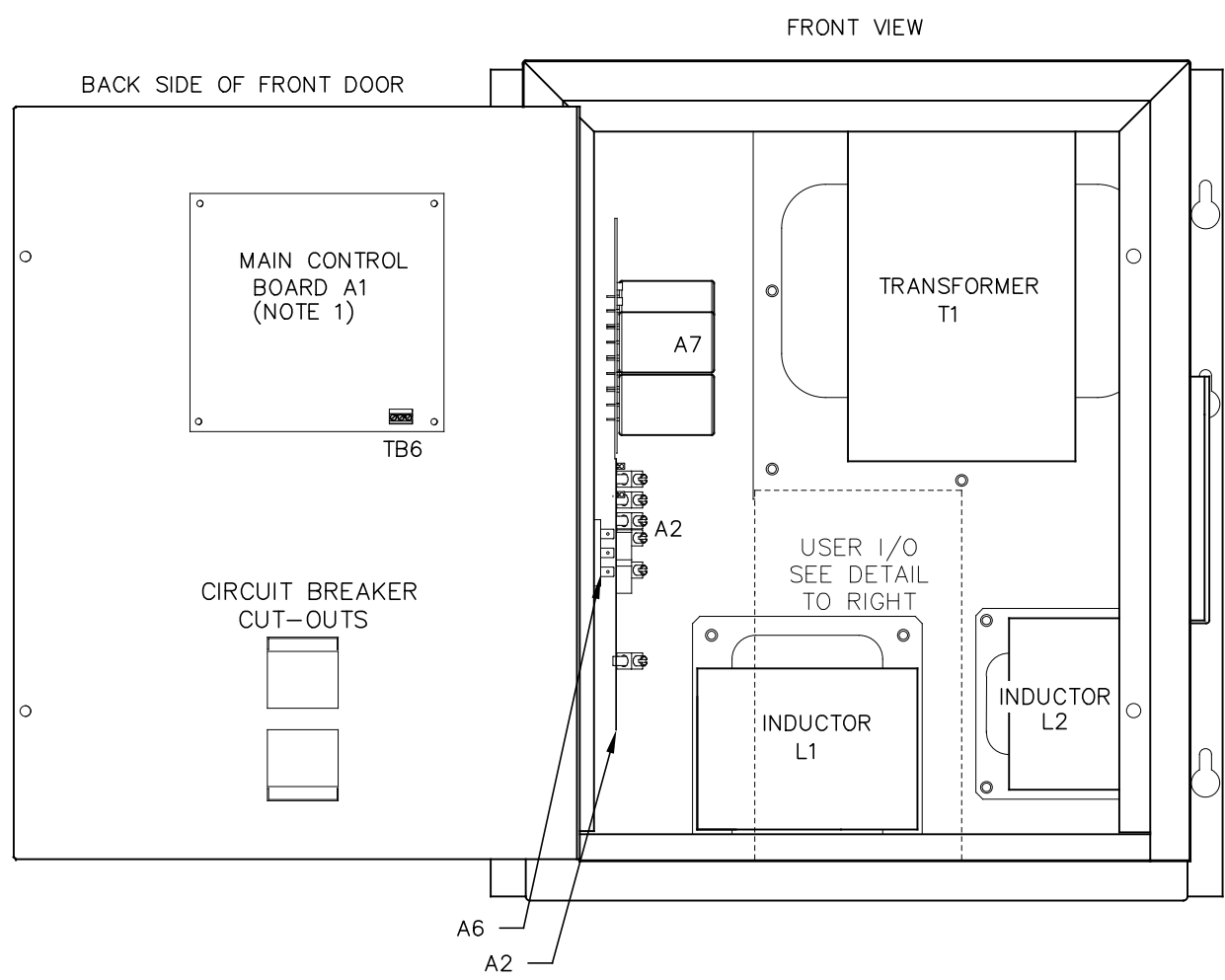
NOTES:

- ENCLOSURE IS A NEMA TYPE 1 / IP20 TOP-VENTED STEEL CABINET WITHOUT GASKETS. FINISH IS ANSI-61 GRAY EPOXY POWDERCOAT. BASE IS 14 GA. SHROUD IS 18 GA. DOOR IS 16 GA.
- ALLOW 6in / 152mm OF FREE AIR ON ALL VENTED SURFACES (TOP, SIDES & REAR) FOR COOLING.
- SIX (6) KEY-HOLE SLOTS ARE PROVIDED ON BACK OF ENCLOSURE AS SHOWN. FOR WALL-MOUNTING WITH 0.25in / 6.25mm HARDWARE.
- SIX (6) 1.31in / 33mm DIA KNOCKOUTS ARE PROVIDED AS SHOWN, WITH TWO (2) ADDITIONAL KNOCKOUTS FEATURED ON BOTTOM PANEL OF ENCLOSURE. USE OF ANY OF THESE FOUR (4) LOWER CONDUIT KNOCKOUTS WILL ALLOW REMOVAL OF CABINET SHROUD WITHOUT REMOVAL OF EXTERNAL WIRING.
- DATA NAMEPLATE DECAL (WITH CHARGER RATINGS) APPLIED TO DOOR.
- BATTERY CHARGER INSTALLATION WEIGHT: SEE PRODUCT LITERATURE.

DUAL DIMENSIONS ⁱⁿ
[mm]

REV	DRN BY	CHK BY	APP BY	DATE	DRN BY	DATE	TITLE ATEVO BATTERY CHARGER OUTLINE: NEMA-1 STYLE-5054 ENCL 1 φ W/O OPTIONS 6-25A
1	KMW	MCR	MCR	02142024	KJB	12/1/2021	
DESCRIPTION Rev. 1 (02/2024)					CHK BY	DATE	
					MCR	12/1/2021	
					APP BY	DATE	NOTICE: UNCONTROLLED DOCUMENT CHANGES / DIGITAL SIGNATURES MAINTAINED BY MANUFACTURER
					MCR	12/1/2021	
							SCALE B NTS
					DWG No JE5251-01		
							REV 1A
							SHEET 1 OF 1

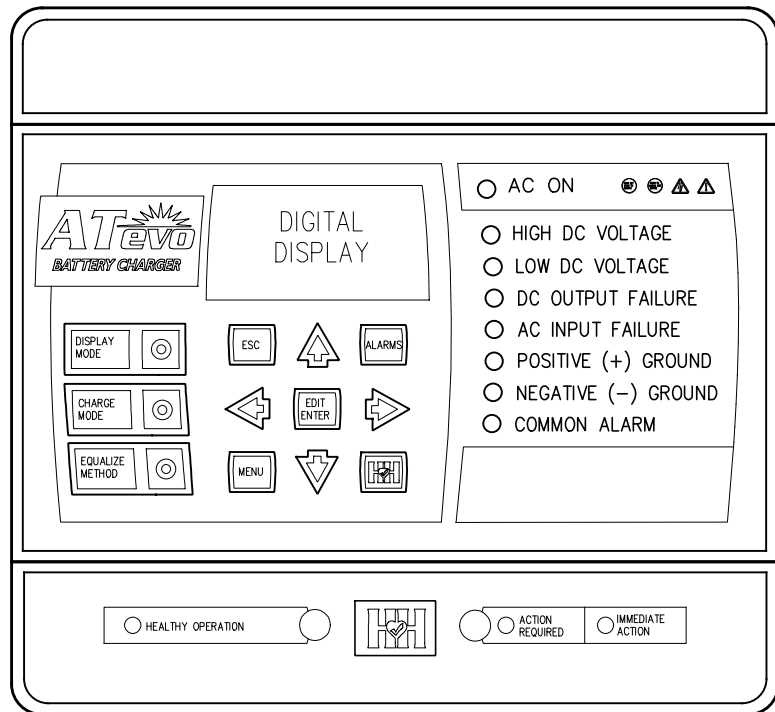
SYM	STANDARD COMPONENT DESCRIPTION
A1	MAIN CONTROL PCB
A6	RECTIFIER H/S ASSEMBLY
A2	POWER BOARD
A7	FILTER BOARD (C1x/R9x)
A9	MOV PCB
CB1	AC INPUT CIRCUIT BREAKER C60-K 2P
CB2	DC OUTPUT CIRCUIT BREAKER C60-K 2P
AUXCB2	DC CKT BKR (CB2) AUXILIARY CONTACTS
L1	MAIN INDUCTOR
L2	FILTER INDUCTOR
T1	POWER ISOLATION TRANSFORMER
TB6	COMMON ALARM RELAY (A1) CONTACTS



NOTES:
 1. FOR DETAIL VIEWS OF ALL PC BOARDS (A1, A2, A4 etc.) SEE DRAWING JE5253-01.

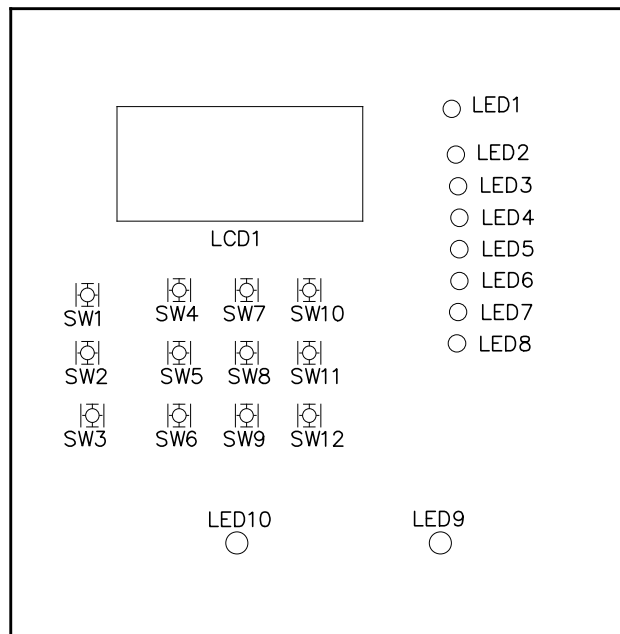
I/O TERMINAL	DESCRIPTION - TYPE	CONNECTION
CB2 (+/-)	POS/NEG DC OUTPUT TERMINALS - CKT BREAKER COMPRESSION LUG	#18-4 AWG
GND LUG	USER GROUND TERMINAL - CU-ALUMINUM COMPRESSION LUG	#14-6 AWG
CB1 (L1/L2)	AC INPUT TERMINALS - CKT BREAKER COMPRESSION LUG	#18-4 AWG
(NOTE 1) (A2) TB1	POS/NEG REMOTE SENSE TERMS (A2) - SOLDERLESS COMP SCREW	#22-14 AWG
(A2) TB8	TEMPCO PROBE (A10) TERM BLK - SOLDERLESS COMP SCREW	#22-14 AWG
(A1) TB6	SUMMARY ALARM TERMINAL BLOCK (A1) - SOLDERLESS COMP SCREW	#22-14 AWG

REV 2	DRN BY KMW	CHK BY MCR	APP BY MCR	DATE 02292024	DRN BY KJB	DATE 12/1/2021	TITLE ATEVO BATTERY CHARGER INTERNAL COMPONENT LAYOUT: STYLE-5054 1 ϕ W/O OPTIONS 6-25A	
DESCRIPTION Rev. 2 (02/29/2024): ADDED MULTI-TAP					CHK BY MCR	DATE 12/1/2021		
					APP BY MCR	DATE 12/1/2021		
					NOTICE: UNCONTROLLED DOCUMENT CHANGES / DIGITAL SIGNATURES MAINTAINED BY MANUFACTURER			
			B SCALE NTS		DWG No JE5252-01		REV 2	SHEET 1 OF 1

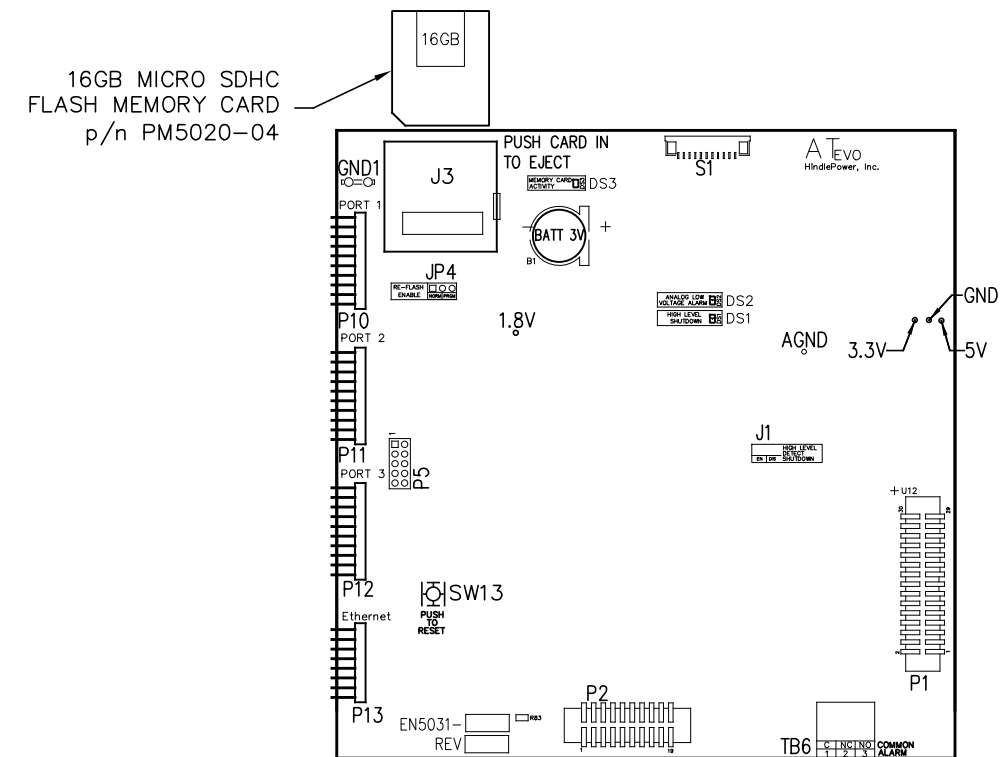


CONTROL PANEL
(p/n FK5047-00)

NOTE: UNLESS OTHERWISE SPECIFIED, ALL USER ALARM TERMINAL BLOCKS ARE SOLDERLESS COMPRESSION SCREW TERMINALS, ACCEPTING #22-14 AWG WIRE. ALARM CONTACTS SHOWN IN NON-ALARM STATE, WITH CHARGER ENERGIZED AND RELAYS ENERGIZED (FAIL SAFE). ALL ALARM CONTACTS WILL CHANGE STATE WHEN ATEVO POWERED DOWN. CONTACT RATING IS 0.5A @ 125VAC/VDC RESISTIVE.



MAIN CONTROL PC BOARD (A1)
FRONT VIEW – FACING CHARGER DOOR WHEN INSTALLED



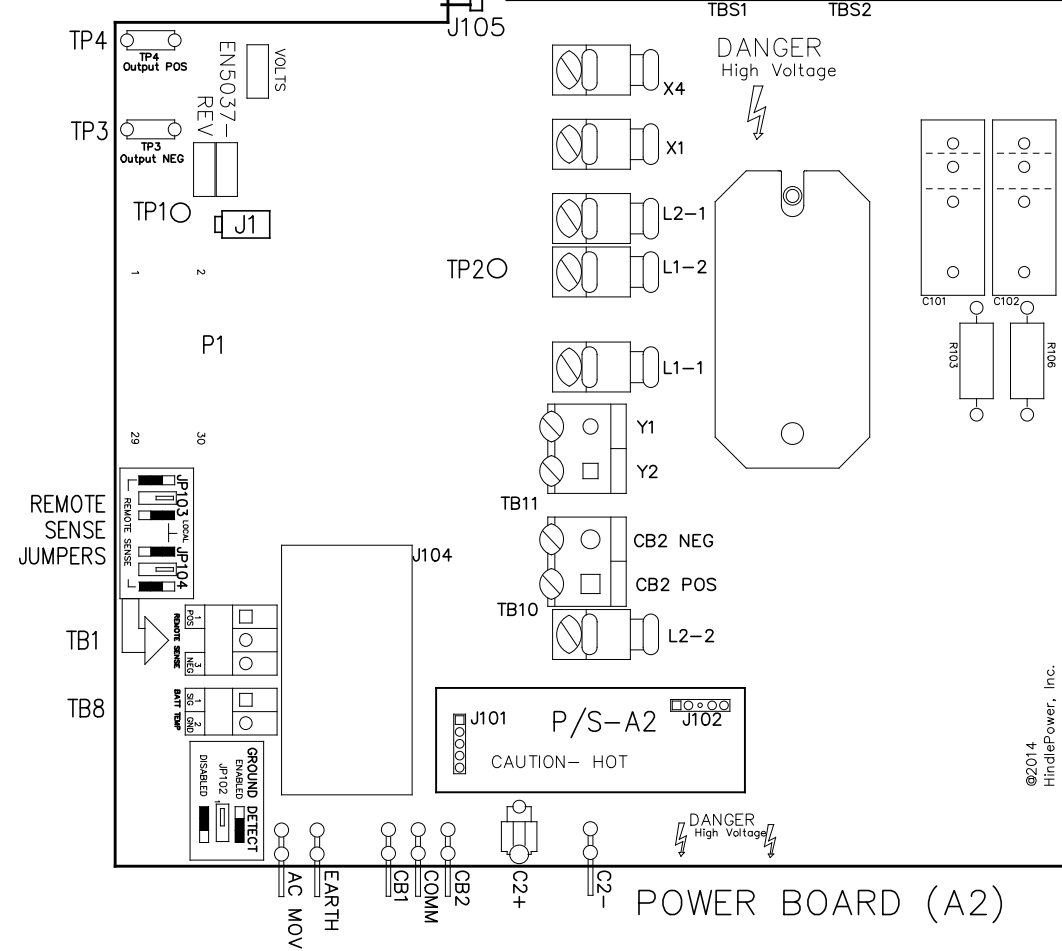
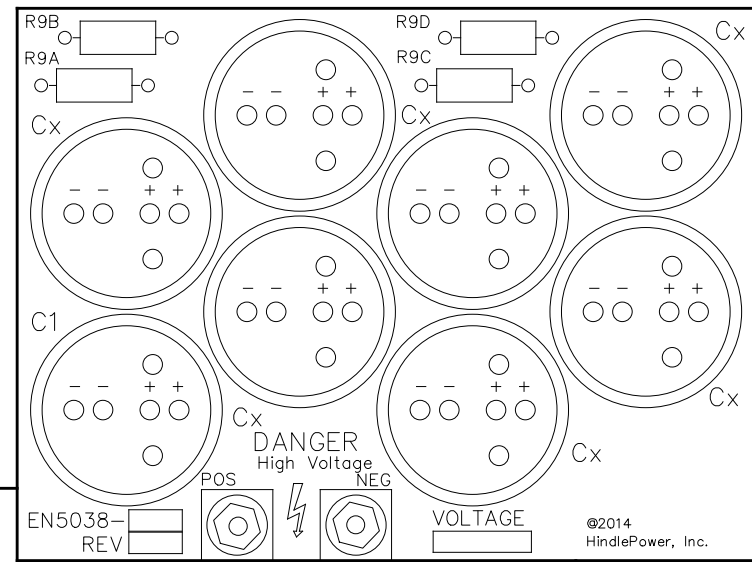
MAIN CONTROL PC BOARD (A1)
BACK VIEW – FACING CHARGER COMPONENTS WHEN INSTALLED

MAIN CONTROL PC BOARD (A1)			
INDICATOR LIGHTS (LEDs):	JUMPERS:	SWITCHES:	CONNECTORS:
LED1 – GREEN – AC ON	J1 – ANALOG HIGH VOLTAGE SHUTDOWN JUMPER	SW1 – DISPLAY BUTTON	P1 – POWER BOARD RIBBON
LED2 – RED – HIGH DC VOLTAGE ALARM	J3 – SD CARD PORT	SW2 – CHARGE MODE BUTTON	P2 – 3 PHASE RECTIFIER RIBBON
LED3 – RED – LOW DC VOLTAGE ALARM	JP4 – RE-FLASH (FIELD PROGRAMMING) JUMPER	SW3 – EQUALIZE METHOD BUTTON	P3 – USB EXPANSION PORT
LED4 – RED – DC OUTPUT FAILURE ALARM	TERMINAL BLOCKS:	SW4 – ESCAPE (ESC) BUTTON	P4 – SPI & I2C EXPANSION PORT #1
LED5 – RED – AC INPUT FAILURE ALARM	TB6 – COMMON ALARM RELAY CONTACTS	SW5 – LEFT ARROW BUTTON	P5 – SPI & I2C EXPANSION PORT #2
LED6 – RED – POSITIVE (+) GROUND ALARM	TEST POINTS:	SW6 – MENU BUTTON	P6 – DISPLAY SPI PORT
LED7 – RED – NEGATIVE (-) GROUND ALARM	1.8V – 1.8 VOLTS	SW7 – UP ARROW BUTTON	P7 – DISPLAY JTAG PORTS
LED8 – RED – COMMON ALARM	3.3V – 3.3 VOLTS	SW8 – EDIT / ENTER BUTTON	P10 – SERIAL INTERFACE PORT #1
LED9 – RED – ACTION REQUIRED ALARM	5V – 5.0 VOLTS	SW9 – DOWN ARROW BUTTON	P11 – SERIAL INTERFACE PORT #2
LED10 – GREEN – HEALTHY OPERATION	GND – GROUND	SW10 – ALARM BUTTON	P12 – SERIAL INTERFACE PORT #3
DS1 – RED – HIGH LEVEL SHUTDOWN (HLD)	AGND – ANALOG GROUND	SW11 – HINDLE HEALTH (HHS) BUTTON	P13 – ETHERNET INTERFACE PORT
DS2 – RED – ANALOG LOW VOLTAGE ALARM (LLD)	SDA – MAIN BOARD I2C DATA	SW12 – HINDLE HEALTH (HHS) BUTTON	P17 – GENERAL EXPANSION PORT
DS3 – RED – MEMORY CARD ACTIVITY	SCL – MAIN BOARD I2C CLOCK	SW13 – SYSTEM RESET BUTTON (BACK OF BOARD)	

I/O TERMINAL	DESCRIPTION – TYPE	CONNECTION
(A1) TB6	COMMON ALARM TERMINAL BLOCK (A1) – SOLDERLESS COMP SCREW	#22-14 AWG

REV	DRN BY	CHK BY	APP BY	DATE	DRN BY	DATE	TITLE ATEVO BATTERY CHARGER CONTROL PANEL / PC BOARD DETAIL 1 φ W/O OPTIONS 6-25A
1	KMW	MCR	MCR	02/14/2024	KJB	12/1/2021	
DESCRIPTION					CHK BY	DATE	
Rev. 1 (02/2024)					MCR	12/1/2021	
					APP BY	DATE	NOTICE: UNCONTROLLED DOCUMENT CHANGES / DIGITAL SIGNATURES MAINTAINED BY MANUFACTURER
					MCR	12/1/2021	
						B	SCALE DWG No NTS JE5253-01
						REV	SHEET
						1	1 OF 2

FILTER BOARD (A7)



- USER TERMINALS ON POWER BOARD (A2):
 TB1 - REMOTE VOLTAGE SENSE
 TB8 - BATTERY TEMPERATURE COMPENSATION
- JUMPERS ON POWER BOARD (A2):
 JP102 - GROUND DETECT CIRCUIT ENABLE / DISABLE
 JP103 - REMOTE OR LOCAL SENSE SELECTOR (+)
 JP104 - REMOTE OR LOCAL SENSE SELECTOR (-)
- CONNECTORS ON POWER BOARD (A2):
 J1 - POWER OUT
 J101 - DC POWER SUPPLY
 J102 - DC POWER SUPPLY
 J105 - AUXILIARY I/O BOARD
 P1 - MAIN CONTROL BOARD RIBBON
- DISCRETE TERMINALS:
 AC MOV - CHASSIS EARTH GROUND
 EARTH - CHASSIS EARTH GROUND (DOOR)
 CB1 - AC BREAKER AUX SWITCH CONTACT
 CB2 - DC BREAKER AUX SWITCH CONTACT
 COMM - BREAKER AUX SWITCH COMMON
 C2+ - ELIMINATOR FILTER CAPACITOR (+)
 C2- - ELIMINATOR FILTER CAPACITOR (-)
 X1 - TRANSFORMER SECONDARY WINDING
 X4 - TRANSFORMER SECONDARY WINDING
 L1-1 - FILTER INDUCTOR #1 (TERMINAL #1)
 L1-2 - FILTER INDUCTOR #1 (TERMINAL #2)
 L2-1 - FILTER INDUCTOR #2 (TERMINAL #1)
 L2-2 - FILTER INDUCTOR #2 (TERMINAL #2)
 TB10 - CB2 DC BREAKER
 TB11 - 'Y' CONTROL WINDINGS
 TBS1 - FILTER CAPACITOR BOARD (+)
 TBS2 - FILTER CAPACITOR BOARD (-)
- TEST POINTS ON POWER BOARD (A2):
 TP1 - PRE-FILTERED DC BUS (-)
 TP2 - PRE-FILTERED DC BUS (+)
 TP3 - DC BUS (-)
 TP4 - DC BUS (+)

I/O TERMINAL	DESCRIPTION - TYPE	CONNECTION
(A2) TB1	POS/NEG REMOTE SENSE TERMS (A2) - SOLDERLESS COMP SCREW	#22-14 AWG
(A2) TB8	TEMPCO PROBE (A10) TERM BLK - SOLDERLESS COMP SCREW	#22-14 AWG

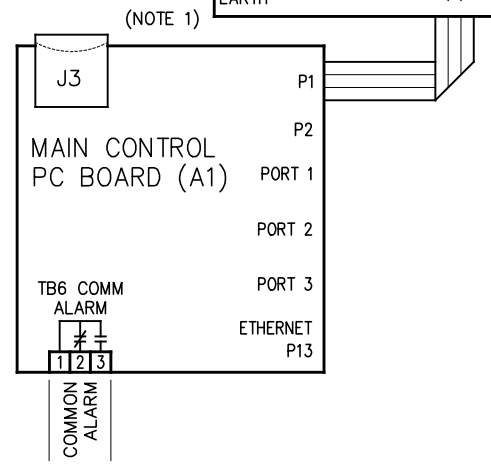
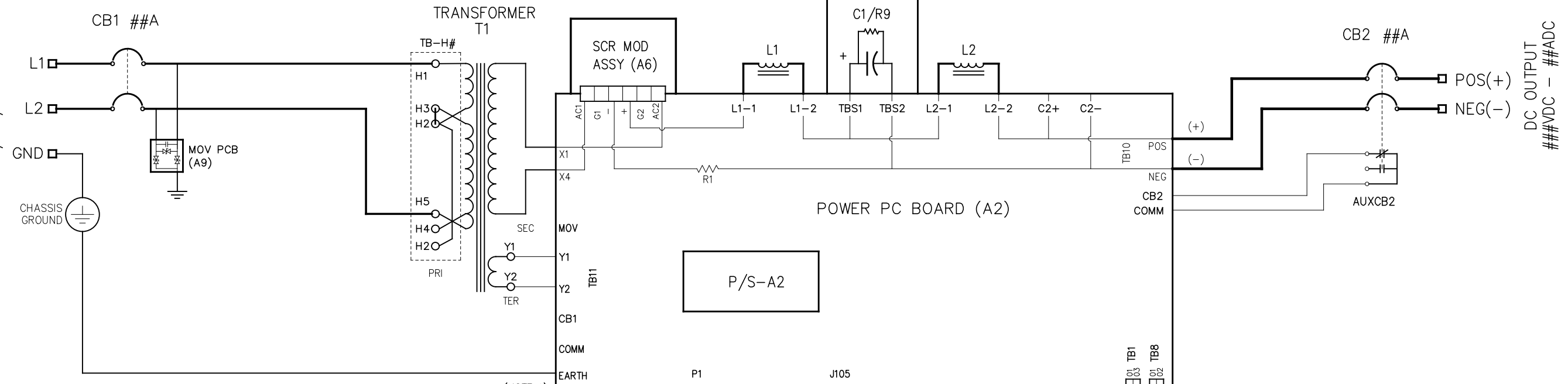
TITLE			
ATEVO BATTERY CHARGER CONTROL PANEL / PC BOARD DETAIL 1 φ W/O OPTIONS 6-25A			
B	SCALE	DWG No	REV
	NTS	JE5253-01	1
			SHEET
			2 OF 2

T1 CONNECTION TABLE	
INPUT	JUMPER
120	H1-H3, H2-H5
208	H4-H2 (2)
240	H3-H2 (2)

SHIPPED FROM FACTORY TAPPED FOR

(NOTE 4)

AC INPUT
120/208/240V - 1 ϕ -60Hz



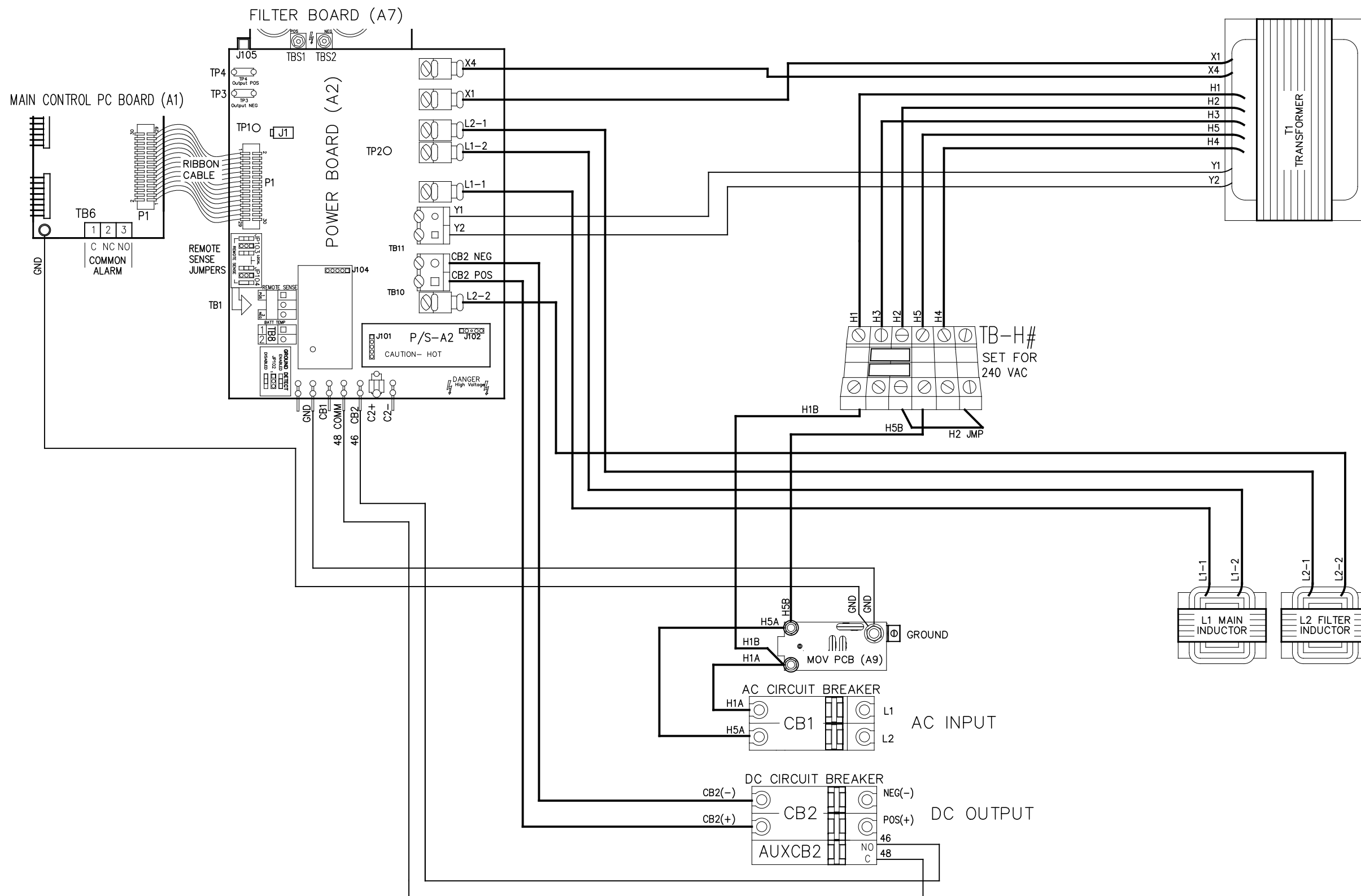
(NOTE 1)

(NOTE 2)

NOTES:

- FOR PHYSICAL COMPONENT FEATURES OF PC BOARDS (A1, A2, A4, A7, etc.) SEE DETAIL DRAWING JE5253-01.
- ALL ALARM CONTACTS SHOWN IN NON-ALARM STATE, WITH CHARGER AND RELAYS ENERGIZED (FAIL SAFE). CONTACTS WILL CHANGE STATE WHEN ATEVO POWERED DOWN.
CONTACT RATING: 0.5A @ 125VAC/VDC RESISTIVE
- RESERVED.
- INPUT POWER ISOLATION TRANSFORMER (T1) IS FIELD RE-TAPPABLE FOR 120, 208, OR 240 VAC. SEE TABLE ABOVE.

REV	DRN BY	CHK BY	APP BY	DATE	DRN BY	DATE	TITLE ATEVO BATTERY CHARGER SCHEMATIC: STYLE-5054 1 ϕ W/O OPTIONS 6-25A
2	KMW	MCR	MCR	02292024	KJB	12/1/2021	
DESCRIPTION				Rev. 2 (02/29/2024): ADDED MULTI-TAP	CHK BY	DATE	
				MCR	12/1/2021	APP BY	
				MCR	12/1/2021	DATE	
				NOTICE: UNCONTROLLED DOCUMENT CHANGES / DIGITAL SIGNATURES MAINTAINED BY MANUFACTURER			
				B	SCALE	DWG No	REV
				NTS		JE5254-01	2
							SHEET
							1 OF 1



NOTES:

1. WHEN NATURAL LEADS OF MAGNETICS ARE NOT USED, CHARGER COMPONENTS ARE CONNECTED WITH BLACK FLAME-RETARDANT SWITCHBOARD INSULATION SYSTEM (SIS) TYPE WIRING, IDENTIFIED ON EACH END WITH NUMBER-CODED MARKERS. GROUND WIRES ARE GREEN WITH YELLOW STRIPE.

REV	DRN BY	CHK BY	APP BY	DATE	DRN BY	DATE	TITLE		
2	KMW	MCR	MCR	02292024	KJB	12/1/2021			
DESCRIPTION					CHK BY	DATE			
Rev. 2 (02/29/2024): ADDED MULTI-TAP					MCR	12/1/2021			
					APP BY	DATE	ATEVO BATTERY CHARGER CONNECTION DIAGRAM: STYLE-5054 1 ϕ W/O OPTIONS 6-25A		
					MCR	12/1/2021			
					NOTICE: UNCONTROLLED DOCUMENT CHANGES / DIGITAL SIGNATURES MAINTAINED BY MANUFACTURER				
						B SCALE NTS	DWG No JE5255-01	REV 2	SHEET 1 OF 1