

DESIGN NOTES:

- EPIC SERIES BATTERY HOUSE IS A PREFABRICATED ENCLOSURE, BUILT TO SPECIFICATION JF5063-02 R004, TO BE DELIVERED READY FOR INSTALLATION. THE ELECTRICAL SYSTEM SHALL BE PREWIRED AND READY FOR AC AND DC CONNECTIONS.
- APPLICABLE CODES:
 - IEEE 693 'HIGH'
 - NFPA 70, NATIONAL ELECTRIC CODE
 - ASCE 7 [LIVE LOADS, ROOF SNOW LOADS, WIND LOADS, ROOF COLLATERAL LOADS, LOAD COMBINATIONS]
 - IEEE 1635 GUIDE FOR THE VENTILATION AND THERMAL MANAGEMENT OF BATTERIES FOR STATIONARY APPLICATIONS.
- CONDUIT ACCESS IS AVAILABLE FROM UNDERNEATH THE ENCLOSURE. SEE JE5321-17079A SHT 3 FOR STUB UP LOCATIONS.
- LOCATE ONTO A PERMANENT, FLAT AND LEVELLED SURFACE, PREFERABLY CONCRETE OR OTHER FIREPROOF MATERIAL. SURFACE MUST BE CAPABLE OF SUPPORTING WEIGHT OF COMPLETE SYSTEM AND INSTALLED COMPONENTS. SEE FOUNDATION DRAWING (JE5321-17079A SHT 3) FOR LOADING INFORMATION.
- AIR CONDITIONER (14,000 BTU) SIZE BASED ON 4965 BTU/HR COOLING LOAD.
- HEAT (7,400 BTU) SIZE BASED ON 7398 BTU/HR HEAT LOAD.

REV.	DATE	DESCRIPTION	DRN BY	CHK BY	APP BY
1	2/26/2019	REVISED FOR CUSTOMER COMMENTS; CHANGED BASE FRAME	KCL	NH	NH
0	01/30/2019	INITIAL RELEASE	KCL	NH	NH

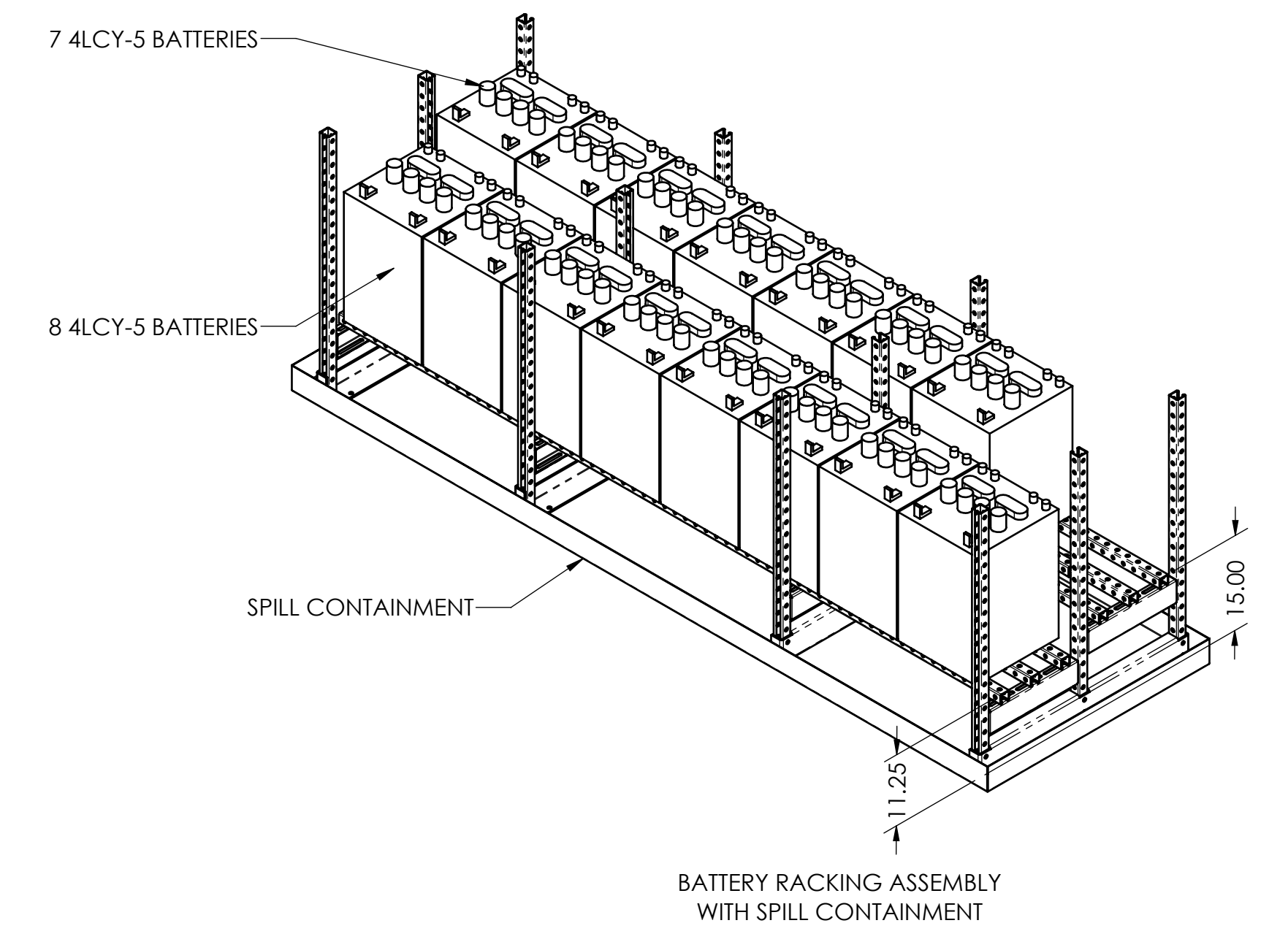
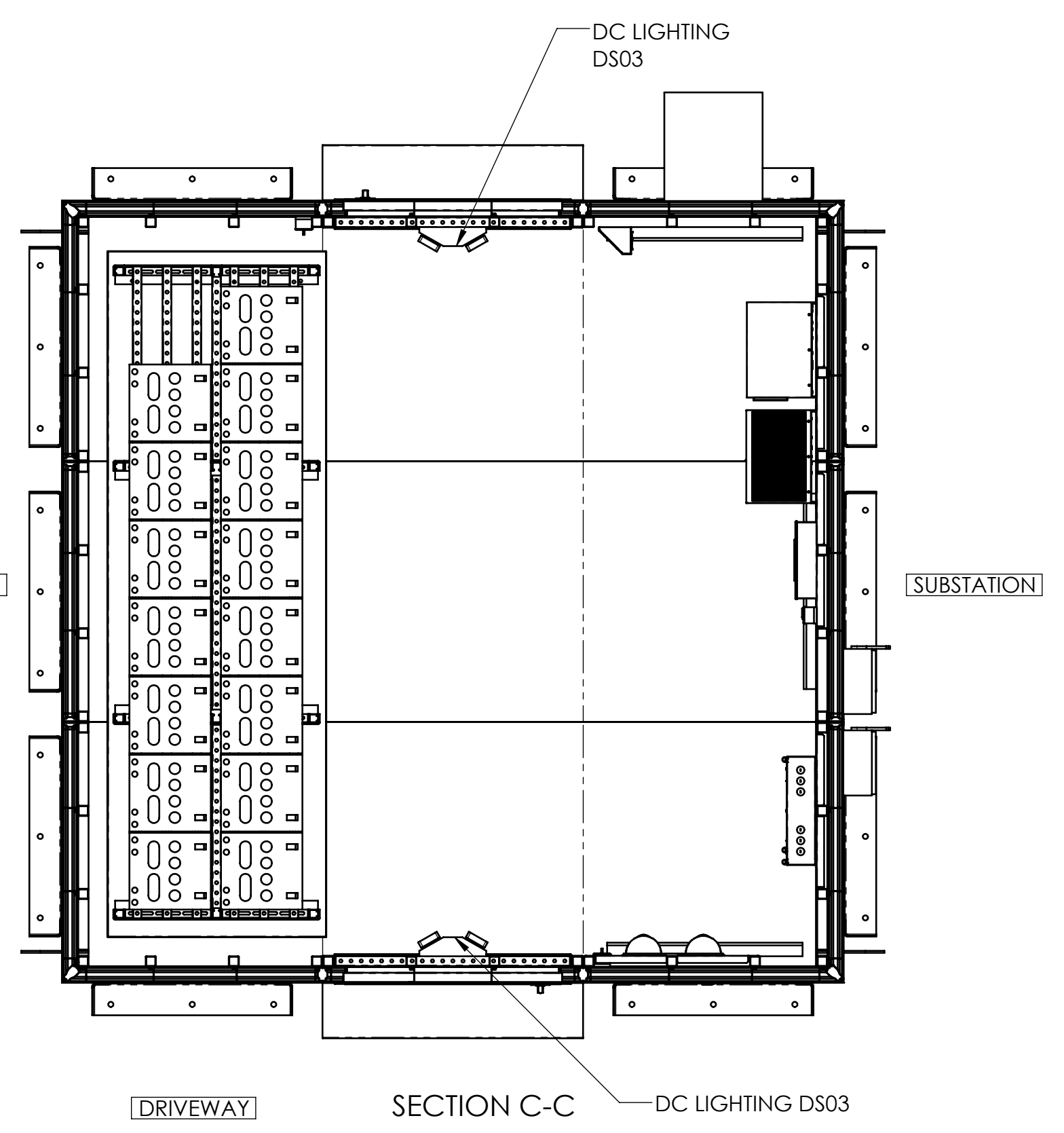
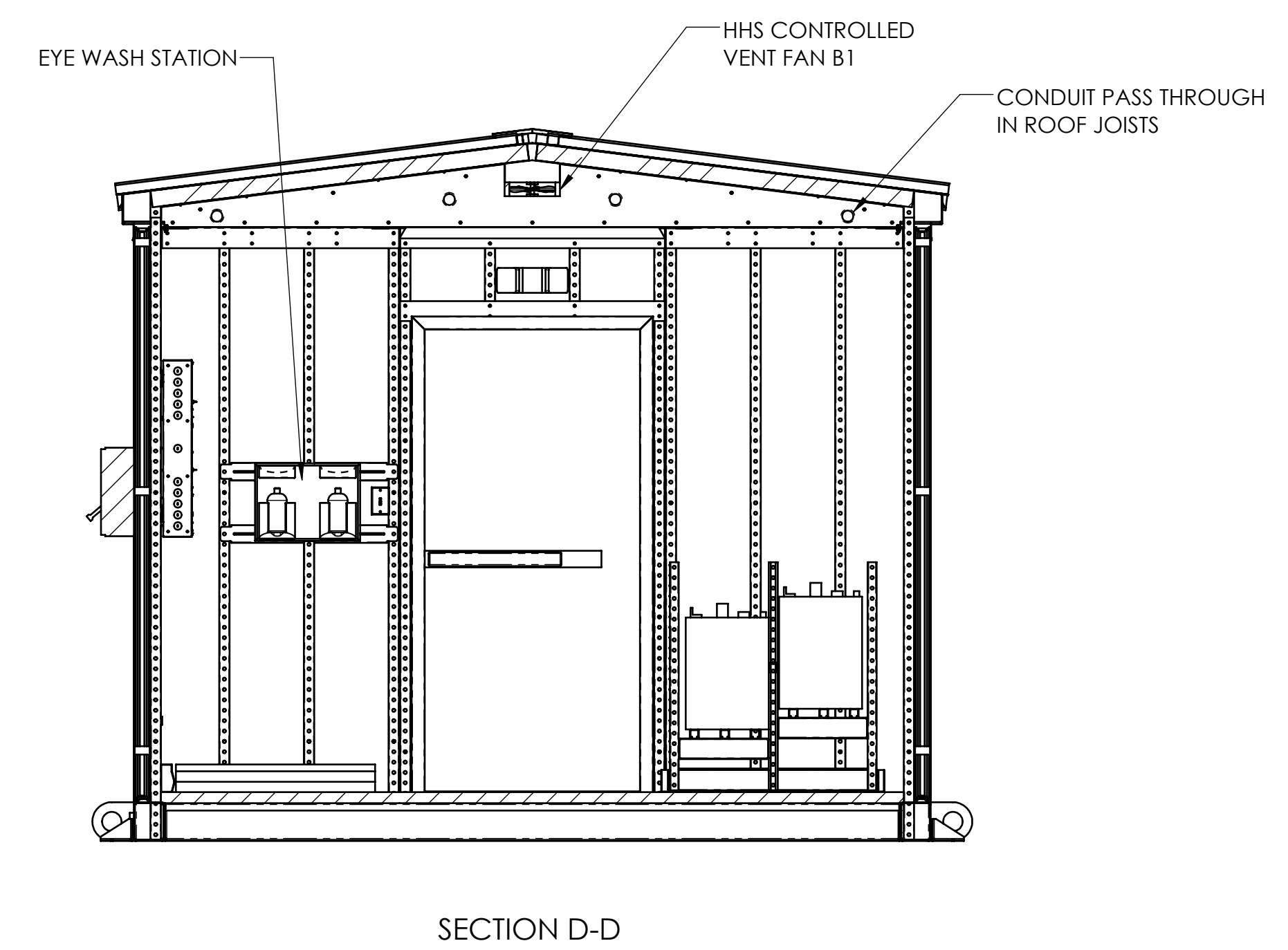
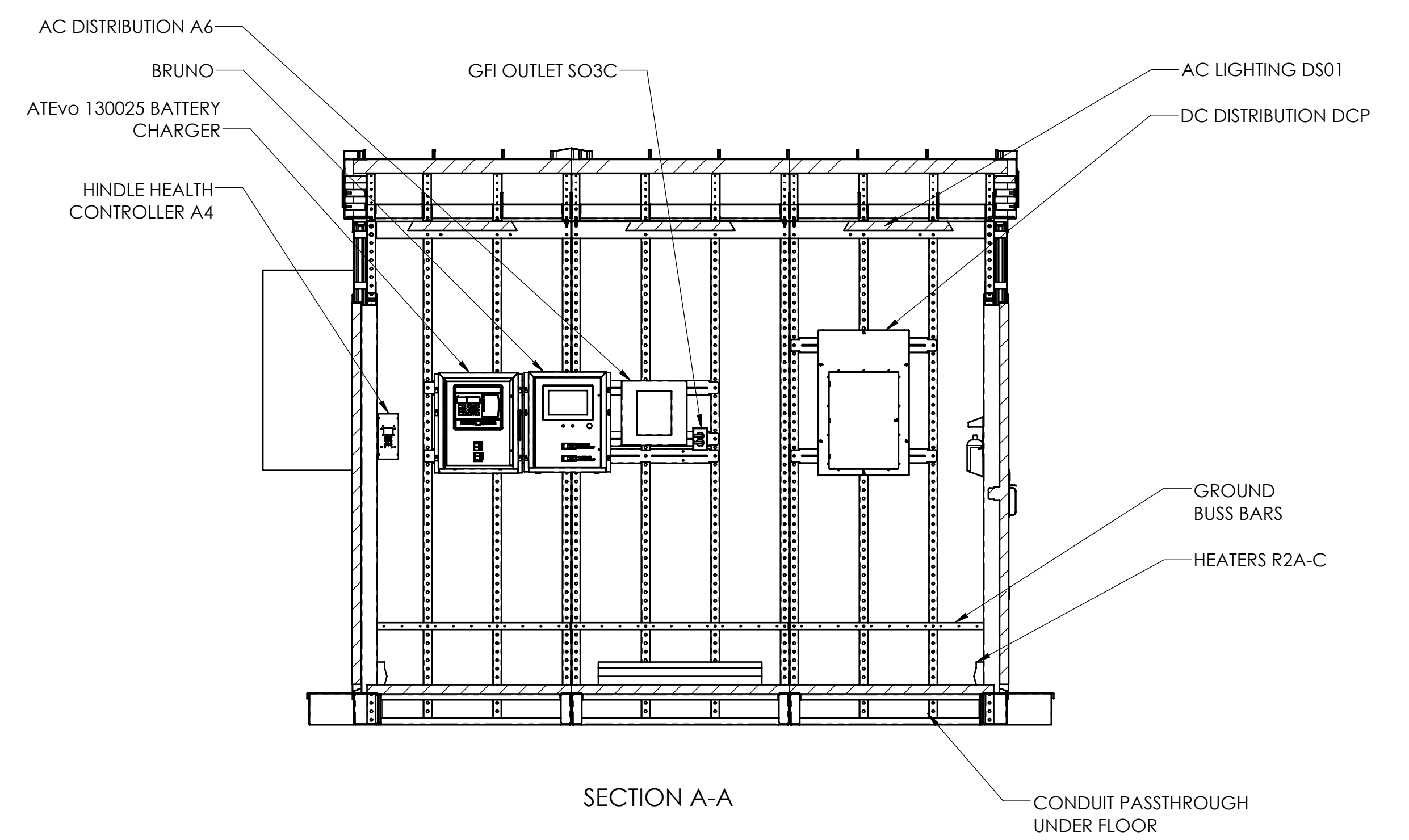
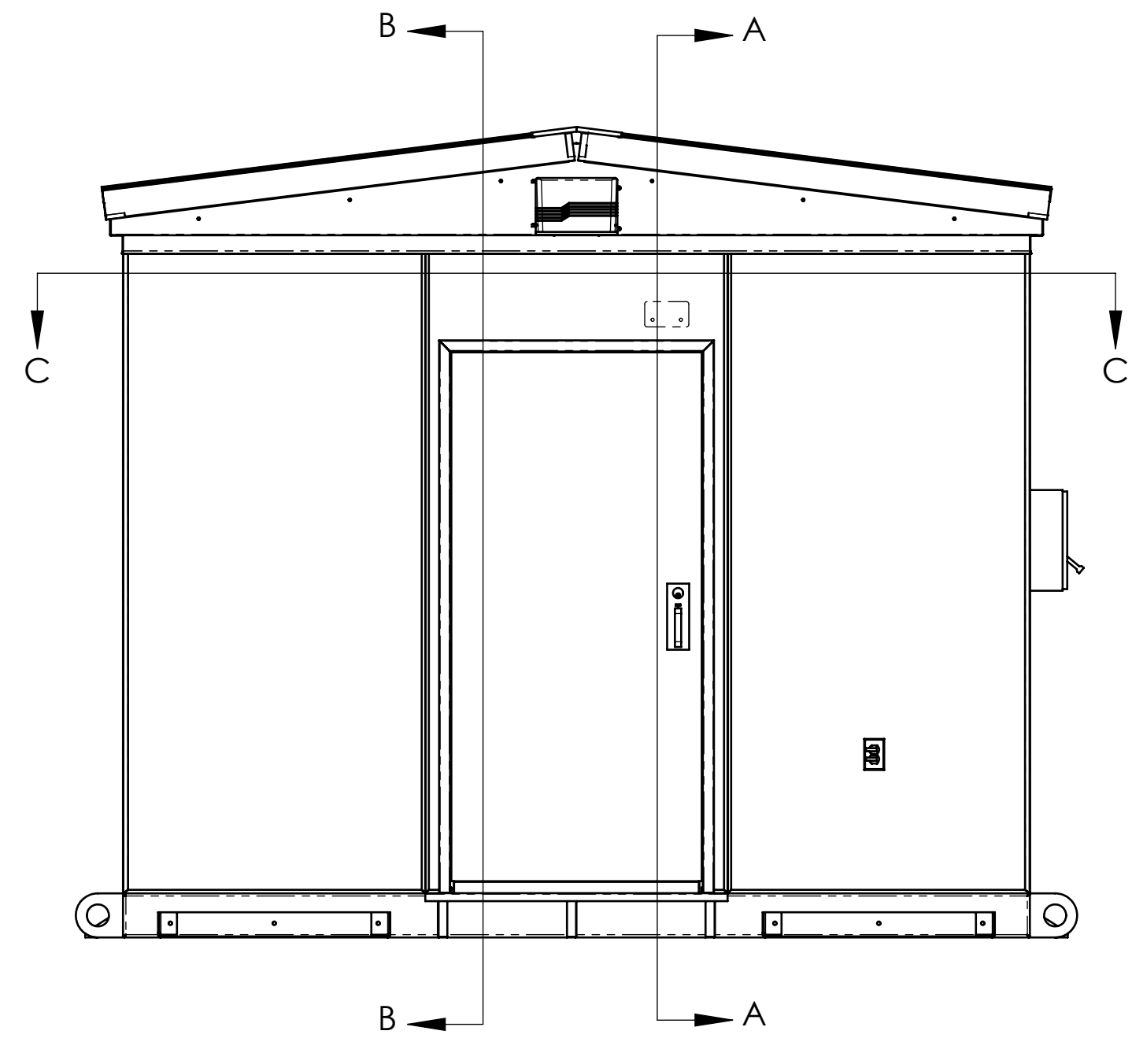
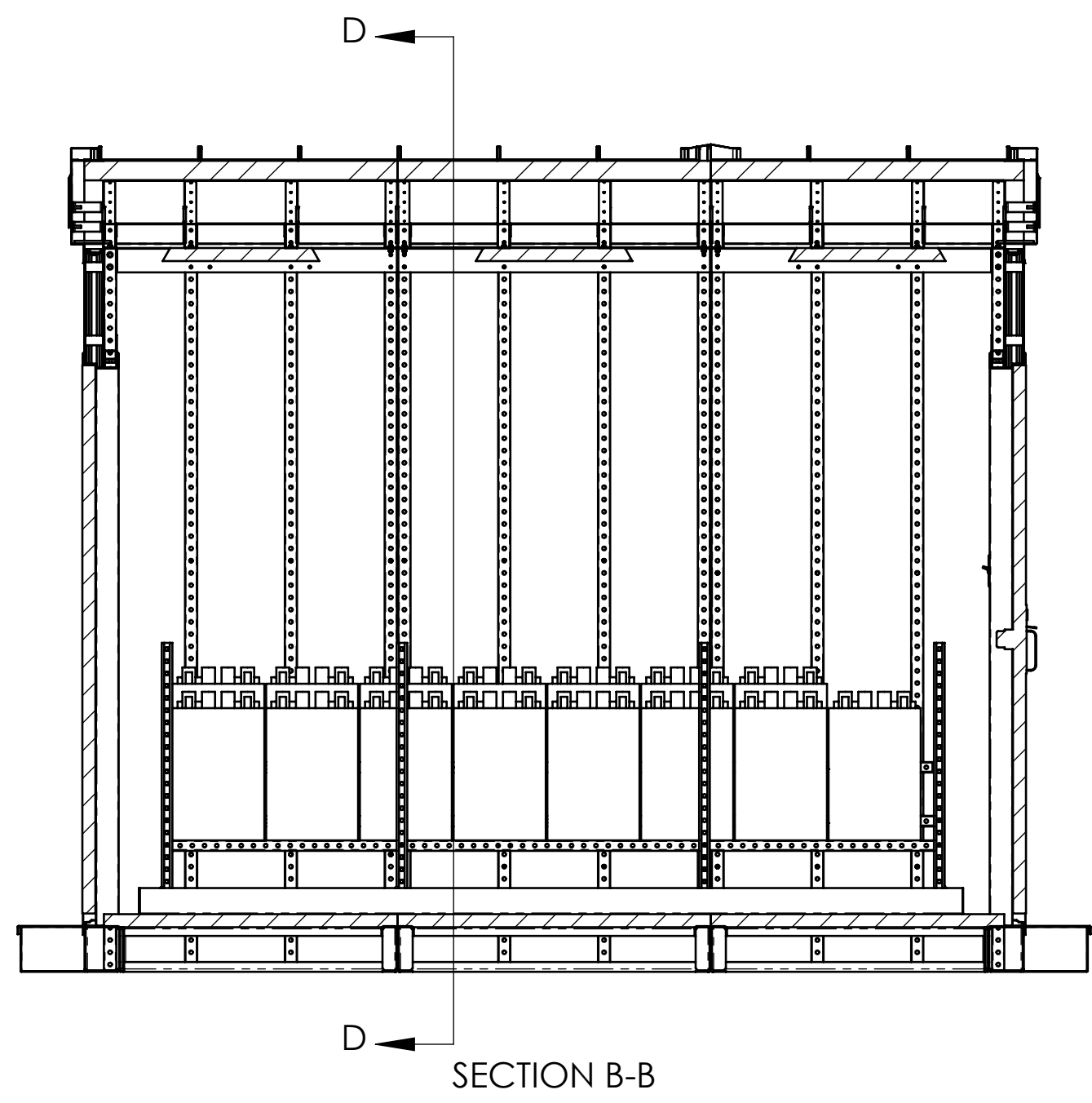
UNLESS OTHERWISE SPECIFIED ALL DIMENSIONS FOLLOW THE INCHES FRACTIONS & DECIMALS TOLERANCES ARE: FRAC: 1/16\"/>

HINDLEPOWER

EPIC SERIES BATTERY HOUSE
OUTLINE
SALES ORDER NUMBER: XXXXXX

SCALE: 1:24
Dwg No: **JE5321-XXXXXX**

1 OF 3



ITEMS NOT SHOWN FOR DRAWING CLARITY:
1. ELECTRICAL CONDUIT AND CABLE TRAYS

REV.	DATE	DESCRIPTION	DRN BY	CHK BY	APP BY
1	2/27/2019	REVISED FOR CUSTOMER COMMENTS; CHANGED BASE FRAME	KCL	NH	NH
0	01/30/2019	INITIAL RELEASE	KCL	NH	NH

C:\Hindle Vault\Custom Drawings\170970\CAD\170970

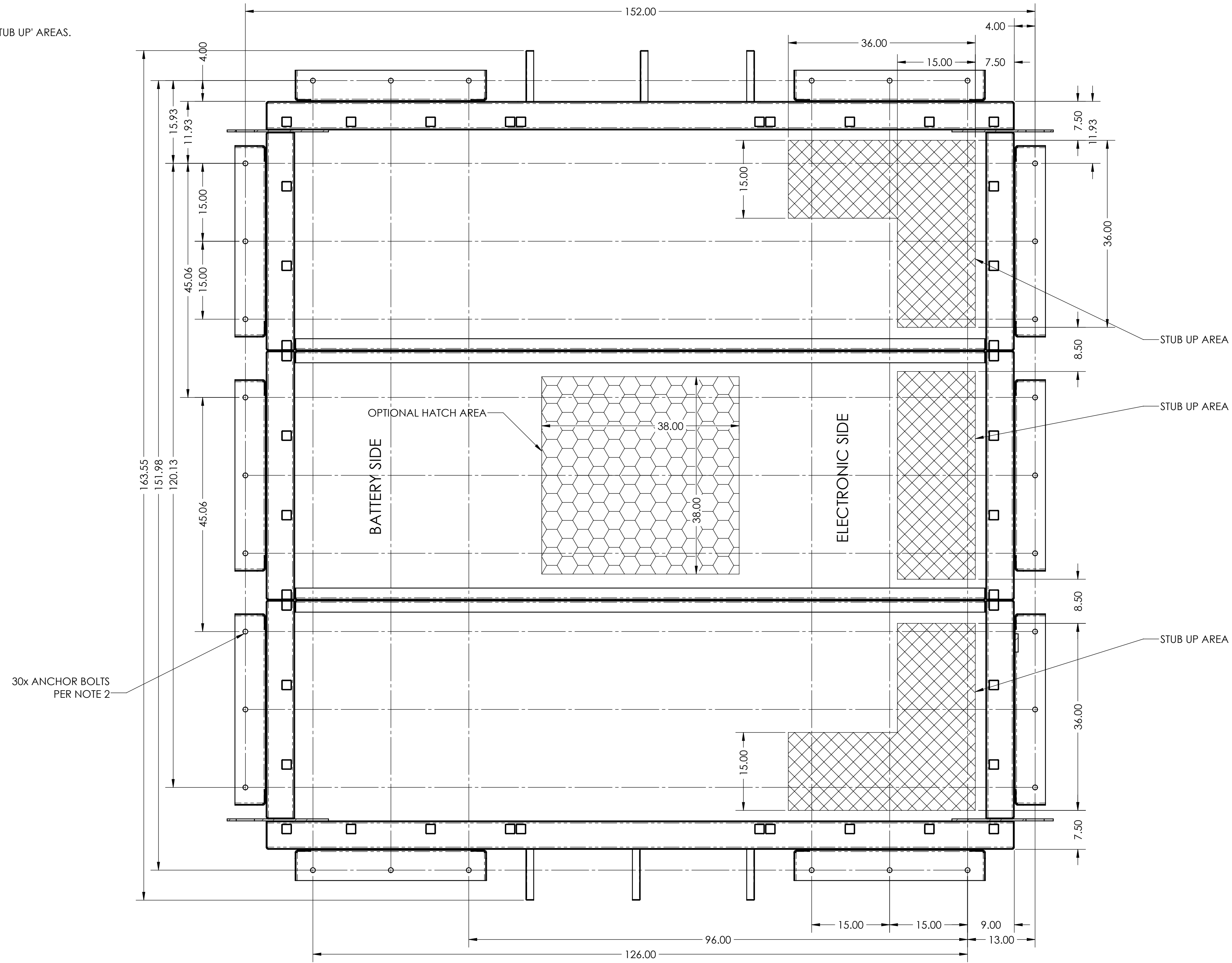
HINDLEPOWER

EPIC SERIES BATTERY HOUSE
INTERNAL VIEWS
SALES ORDER NUMBER: XXXXXX

SCALE: 1:24
DWG NO: **JE5322-XXXXXX**
REV 1
SHEET 2 OF 3

NOTES:

1. MOUNTING DIMENSIONS SHOWN ON DRAWINGS ARE FINAL.
2. ANCHOR SHALL COMPLY WITH 2018, 2015, 2012 INTERNATIONAL BUILDING CODE. DESIGN STRENGTH OF ANCHORS MUST BE ACCORDANCE WITH INTERNATIONAL BUILDING CODE. DEPTH AND SIZE OF ANCHOR DEPENDENT UPON ANCHOR MANUFACTURER.
3. CONCRETE PAD TO EXTEND A MINIMUM OF 10" FROM EDGE OF CABINET ON ALL SIDES. SEE MOUNTING DIMENSIONS BELOW. THE WEIGHT OF THE EPIC SERIES BATTERY HOUSE IS 11872.2 LBS
4. CONCRETE PAD TO BE 4000 PSI OR GREATER.
5. ELECTRICAL CONDUIT MAY ENTER FROM CALLED OUT 'STUB UP' AREAS.



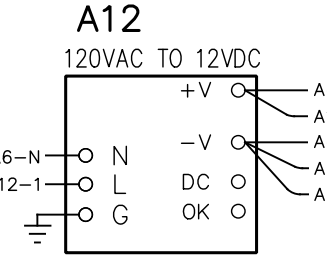
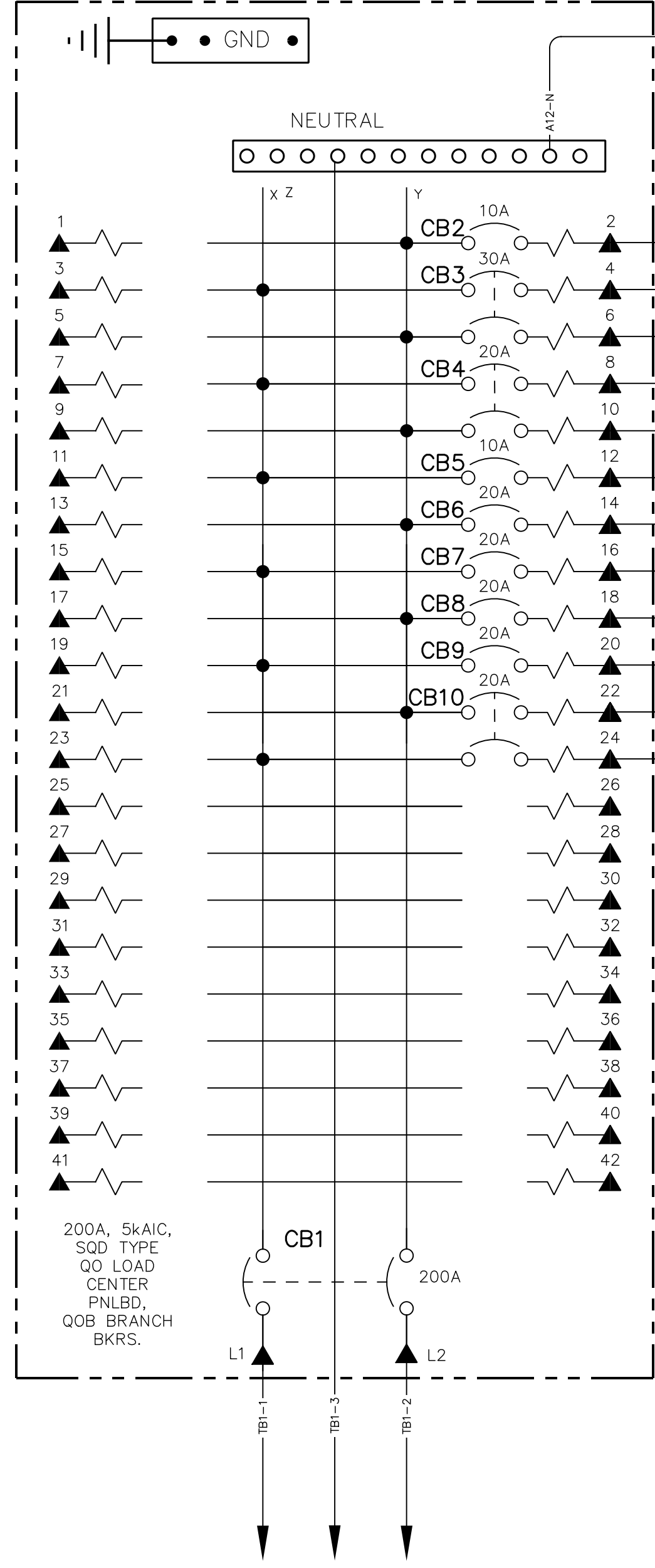
REV.	DATE	DESCRIPTION	DRN BY	CHK BY	APP BY	SCALE	TITLE	SHEET
1	2/27/2019	REVISED FOR CUSTOMER COMMENTS; CHANGED BASE FRAME	KCL	NH	NH	1:12	EPIC SERIES BATTERY HOUSE FOUNDATION SALES ORDER NUMBER: XXXXXX	3 OF 3
0	01/30/2019	INITIAL RELEASE	KCL	NH	NH			
							UNLESS OTHERWISE SPECIFIED ALL DIMENSIONS FOLLOW THE AND SYSTEMS (INCHES FRACTIONS & DECIMALS) TOLERANCES ARE: FRACTION 1/16" DECIMALS .005"	
							PROPERTY AND CONFIDENTIAL NOTICE ANY REPRODUCTION, PARTIAL OR AS A WHOLE OF THIS DOCUMENT WITHOUT THE WRITTEN PERMISSION OF HINDLE POWER SHALL BE PROHIBITED.	

C:\Hindle Vault\Custom Drawings\170970\CAD\170970

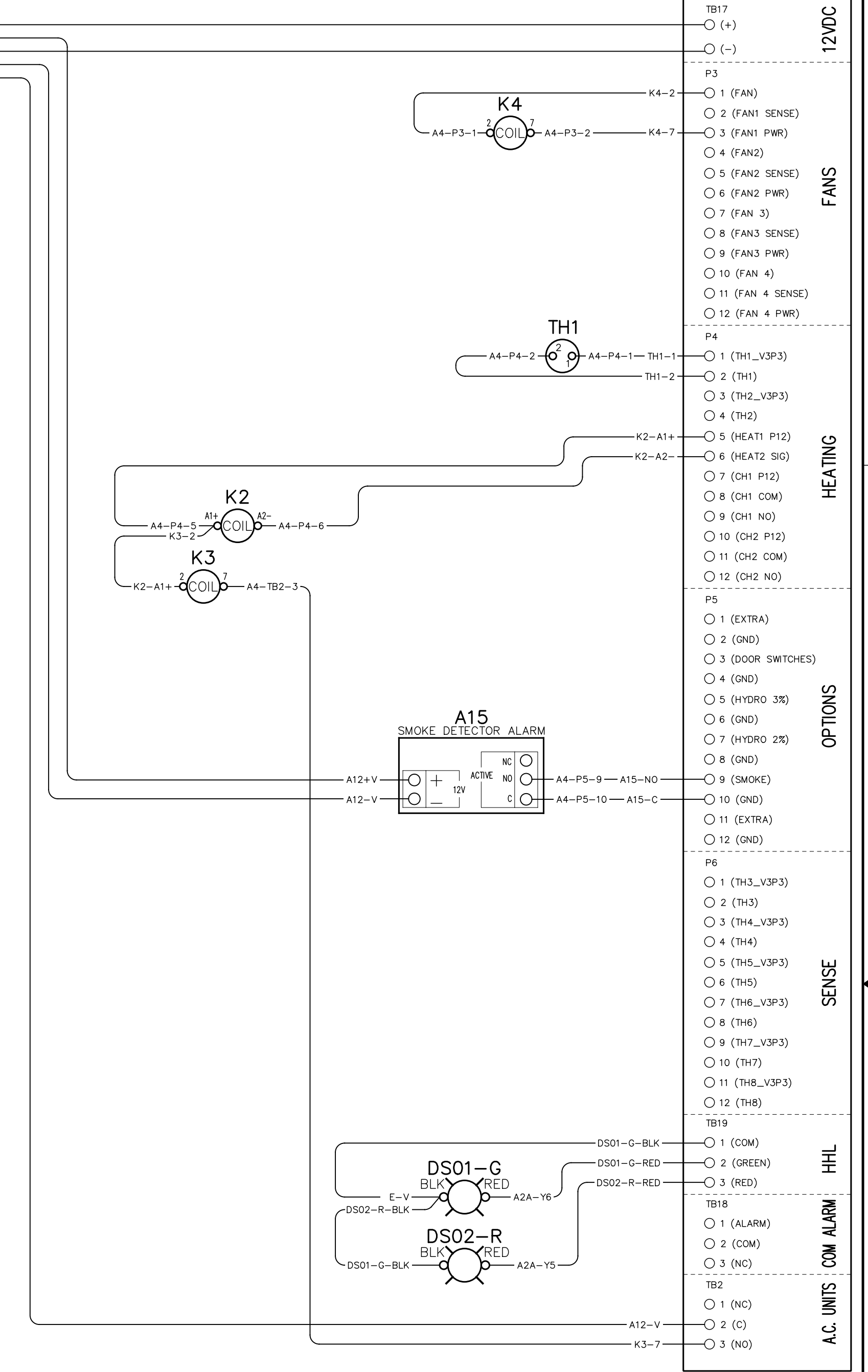


TITLE: EPIC SERIES BATTERY HOUSE FOUNDATION
 SALES ORDER NUMBER: XXXXXX
 SCALE: 1:12
 DWG No: JE5323-XXXXXX
 REV: 1
 SHEET: 3 OF 3

A6 HINDLEPOWER SUBPANEL



A4 HINDLE HEALTH CONTROLLER



EPIC SERIES COMPONENTS

SYMBOL	DESCRIPTION
A4	HINDLE HEALTH CONTROLLER
A6	AC DISTRIBUTION PANEL
A12	12VDC POWER SUPPLY
B1	BATTERY SECTION VENT FAN
B2	ELECTRIC SECTION VENT FAN
B3	AIR CONDITIONING UNIT
BC	BATTERY CHARGER
BR	BRUNO DC SYSTEM WHATCHDOG
CB1	MAIN CIRCUIT BREAKER FOR A6
CB2	CIRCUIT BREAKER FOR A12 P/S
CB3	CIRCUIT BREAKER FOR HEATING SYSTEM
CB4	CIRCUIT BREAKER FOR AIR CONDITIONER
CB5	CIRCUIT BREAKER FOR LIGHTING
CB6	CIRCUIT BREAKER GFI OUTLET
CB7	CIRCUIT BREAKER GFI OUTLET
CB8	CIRCUIT BREAKER GFI OUTLET
DS01	INTERIOR AC LIGHTING
DS01-G	GREEN LED
DS02-R	RED LED
DS03X	EMERGENCY DC LIGHTING
DS04X	EXTERIOR AC LIGHTING
K2	CONTACTOR FOR HEATING SYSTEM
K3	CONTACTOR FOR AIR CONDITIONER
K4	CONTACTOR FOR VENT FAN
R2X	HEATER SYSTEM
S03A-C	20A GFI OUTLET
SW1-2	AC LIGHT SWITCH
SW20	DC DISCONNECT SWITCH
SW21	AC DISCONNECT SWITCH
TB2-R2	HEATING SYSTEM TERMINAL BLOCK
TB4X1/B	ALARM CONTACTS
TH1	THERMAL SENSOR FOR BATTERY SECTION

TERMINAL BLOCK LEGEND FOR EPIC LINE

SYMBOL	DESCRIPTION
○	DEVICE TERMINAL
⊗	TERMINAL BLOCK POINT IN TRANSFORMER
⊙	SHORTING TERMINAL BLOCK POINT IN TRANSFORMER
⊠	TERMINAL BLOCK POINT IN RELAY PANEL
⊡	SHORTING TERMINAL BLOCK POINT IN RELAY PANEL
⊢	TERMINAL BLOCK POINT IN A.C. AND D.C. CABINET FOR A.C. OR D.C. PANELBOARD
⊣	TERMINAL BLOCK POINT FOR SCADA
⊤	TERMINAL BLOCK POINT FOR COMMUNICATIONS
⊥	TERMINAL BLOCK POINT IN POWER CIRCUIT BREAKER
⊦	SHORTING TERMINAL BLOCK IN POWER CIRCUIT BREAKER
⊧	TERMINAL BLOCK IN V.T. FUSE AND TERMINAL CABINET
⊨	SHORTING TERMINAL BLOCK IN V.T. FUSE AND TERMINAL CABINET
⊩	TERMINAL BLOCK POINT IN AUXILIARY TRIP PUSHBUTTON CABINET
⊪	TERMINAL IN A.C. OR D.C. PANELBOARD

REV.	DATE	DESCRIPTION
1	02/26/2019	REVISED AS PER RED LINES
0	01/31/2019	APPROVAL DRAWINGS

DRN BY	CHK BY	APP BY
KJB	KCL	RCF
KJB	KCL	RCF

UNLESS OTHERWISE SPECIFIED ALL DIMENSIONS FOLLOW THE ANGLES SYSTEM (INCHES POUNDS & SECONDS) TOLERANCES ARE: FRACTIONS - 1/32" DEC. - ± 0.15, ANG ± .25"

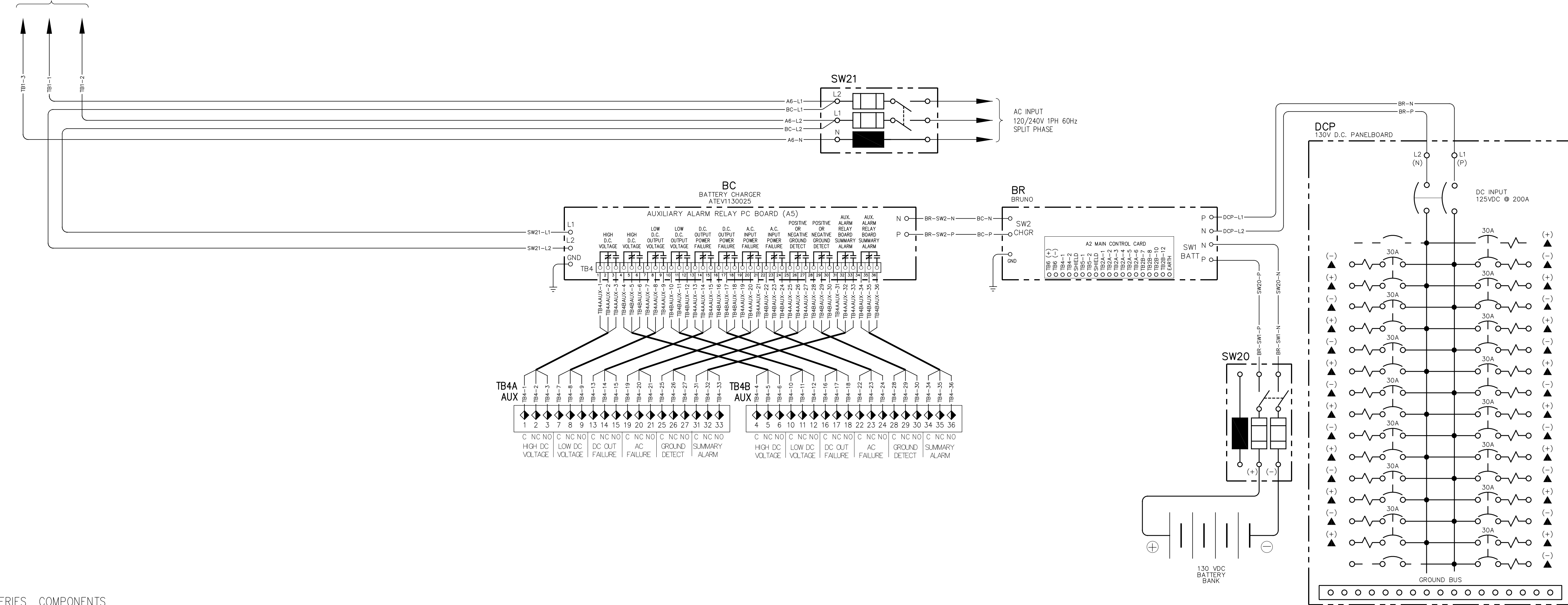
HINDLEPOWER

EPIC SERIES BATTERY HOUSE CONNECTION DIAGRAM SALES ORDER NO. XXXXXX

SCALE: DWG No. **JE5325-XXXXXX** REV 1 SHEET 1 OF 2

(17097A DWG)

(SEE PAGE 1 FOR AC PANEL AND ENVIRONMENTAL CONTROLS)



EPIC SERIES COMPONENTS

SYMBOL	DESCRIPTION
A4	HINDLE HEALTH CONTROLLER
A6	AC DISTRIBUTION PANEL
A12	12VDC POWER SUPPLY
B1	BATTERY SECTION VENT FAN
B2	ELECTRIC SECTION VENT FAN
B3	AIR CONDITIONING UNIT
BC	BATTERY CHARGER
BR	BRUNO DC SYSTEM WATCHDOG
CB1	MAIN CIRCUIT BREAKER FOR A6
CB2	CIRCUIT BREAKER FOR A12 P/S
CB3	CIRCUIT BREAKER FOR HEATING SYSTEM
CB4	CIRCUIT BREAKER FOR AIR CONDITIONER
CB5	CIRCUIT BREAKER FOR LIGHTING
CB6	CIRCUIT BREAKER GFI OUTLET
CB7	CIRCUIT BREAKER GFI OUTLET
CB8	CIRCUIT BREAKER GFI OUTLET
DS01	AC LIGHTING
DS01-G	GREEN LED
DS02-R	RED LED
DS03X	EMERGENCY DC LIGHTING
K2	CONTACTOR FOR HEATING SYSTEM
K3	CONTACTOR FOR AIR CONDITIONER
K4	CONTACTOR FOR VENT FAN
R2X	HEATER SYSTEM
S03A-C	20A GFI OUTLET
SW1-2	AC LIGHT SWITCH
SW20	DC DISCONNECT SWITCH
SW21	AC DISCONNECT SWITCH
TB2-R2	HEATING SYSTEM TERMINAL BLOCK
TB4AUX A/B	ALARM CONTACTS
TH1	THERMAL SENSOR FOR BATTERY SECTION
TH2	THERMAL SENSOR FOR ELECTRIC SECTION

TERMINAL BLOCK LEGEND FOR EPIC LINE

SYMBOL	DESCRIPTION
○	DEVICE TERMINAL
⊗	TERMINAL BLOCK POINT IN TRANSFORMER
⊙	SHORTING TERMINAL BLOCK POINT IN TRANSFORMER
□	TERMINAL BLOCK POINT IN RELAY PANEL
⊠	SHORTING TERMINAL BLOCK POINT IN RELAY PANEL
■	TERMINAL BLOCK POINT IN A.C. AND D.C. CABINET FOR A.C. OR D.C. PANELBOARD
◆	TERMINAL BLOCK POINT FOR SCADA
◇	TERMINAL BLOCK POINT FOR COMMUNICATIONS
⊕	TERMINAL BLOCK POINT IN POWER CIRCUIT BREAKER
⊖	SHORTING TERMINAL BLOCK IN POWER CIRCUIT BREAKER
△	TERMINAL BLOCK IN V.T. FUSE AND TERMINAL CABINET
▲	SHORTING TERMINAL BLOCK IN V.T. FUSE AND TERMINAL CABINET
⚡	TERMINAL BLOCK POINT IN AUXILIARY TRIP PUSHBUTTON CABINET
⚡	TERMINAL IN A.C. OR D.C. PANELBOARD

REV.	DATE	DESCRIPTION	DRN BY	CHK BY	APP BY
1	02/26/2019	REVISED AS PER RED LINES	KJB	KCL	RCF
0	01/31/2019	APPROVAL DRAWINGS	KJB	KCL	RCF

UNLESS OTHERWISE SPECIFIED ALL DIMENSIONS FOLLOW THE ANGLES UNLESS OTHERWISE SPECIFIED IN THIS DOCUMENT WITHOUT THE WRITTEN PERMISSION OF HINDLE POWER, INC. IS STRICTLY PROHIBITED.

HINDLE POWER

EPIC SERIES BATTERY HOUSE CONNECTION DIAGRAM SALES ORDER NO. XXXXXX

SCALE: NTS DWG No: **JE5325-XXXXXX** REV 1 SHEET 2 OF 2

(17097A DWG)