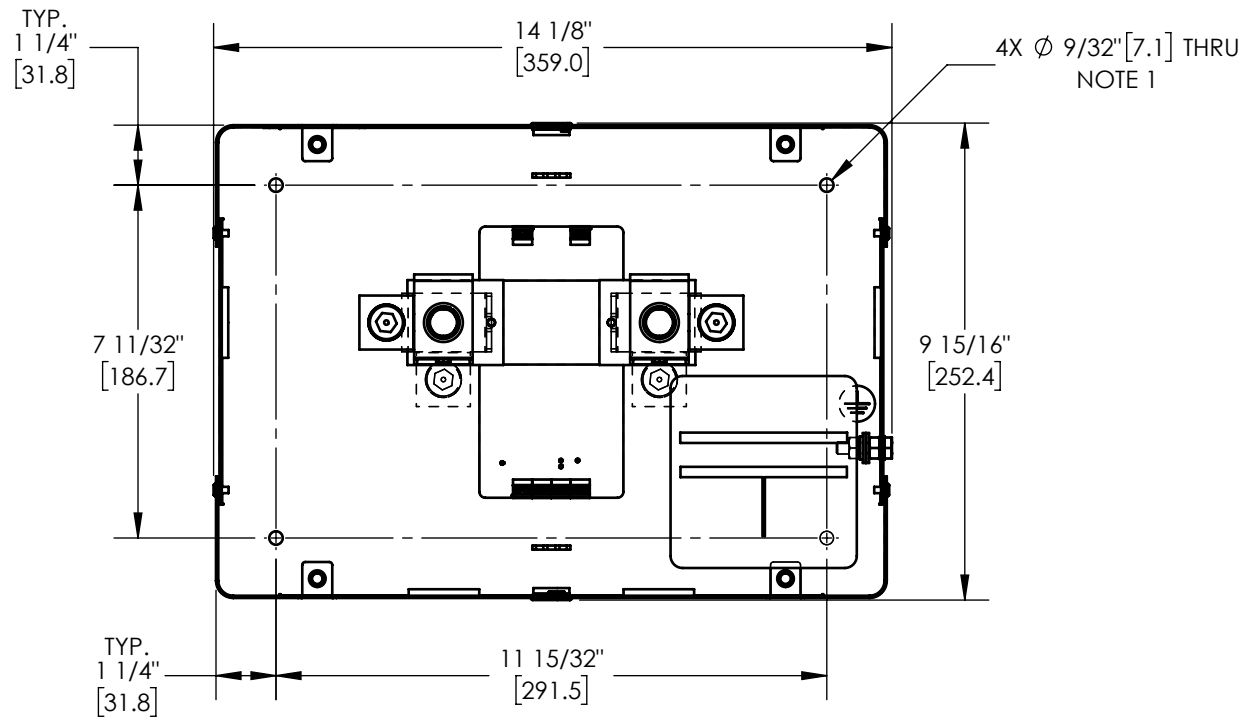
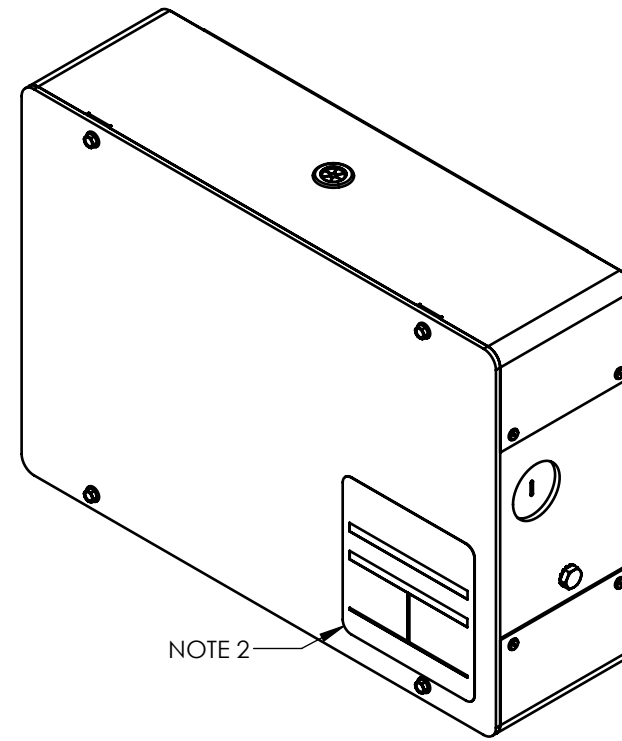


SPECIFICATIONS:

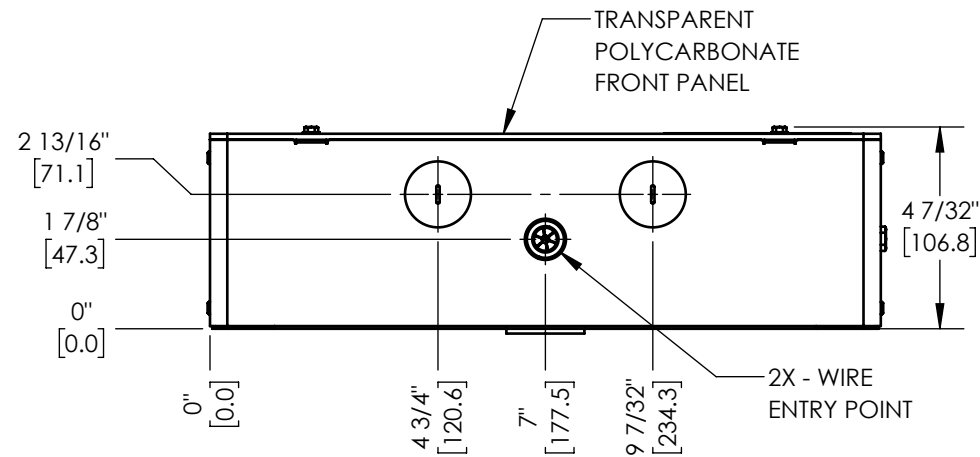
- A. ENCLOSURE BASE CONSTRUCTED OF 18 GAUGE STEEL WITH A TEXTURED GRAY FINISH.
- B. FRONT PANEL IS 1/8in / 3.2mm THICK TRANSPARENT POLYCARBONATE.



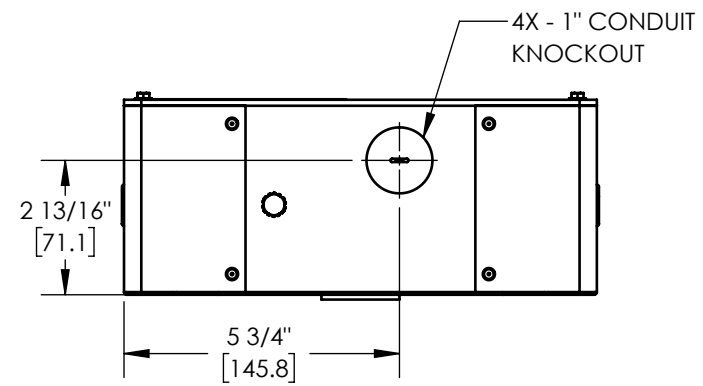
FRONT VIEW



ISO VIEW



BOTTOM VIEW



RIGHT VIEW

NOTES:

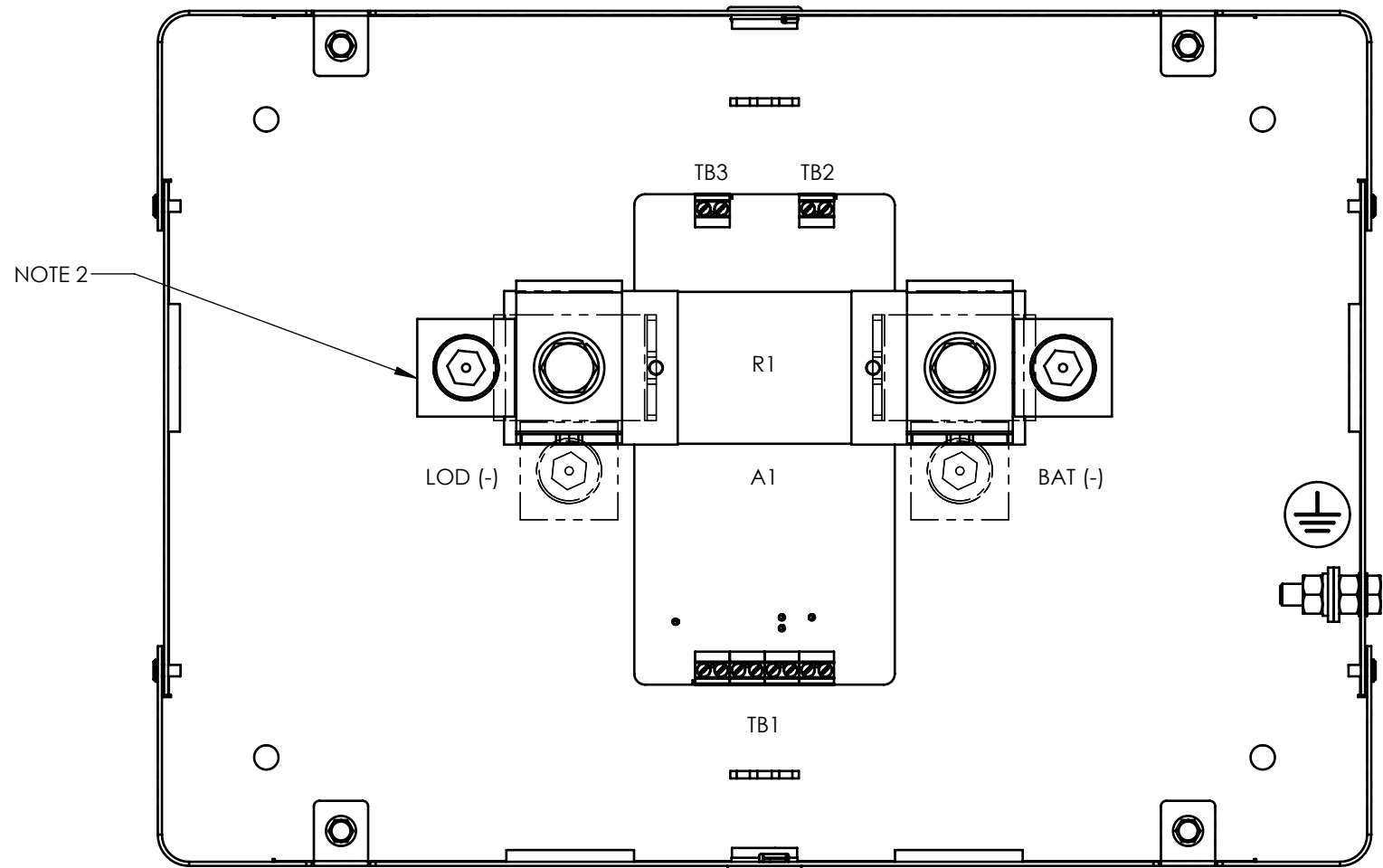
1. FOUR (4) FLUSH MOUNT HOLES ARE PROVIDED ON BACK PANEL OF ENCLOSURE AS SHOWN FOR MOUNTING WITH 1/4" [M6] HARDWARE.
2. DATA NAMEPLATE (WITH RATINGS) MOUNTED ON FRONT PANEL.
 - MODEL No.: EJ5178-00
 - SERIAL No.:
3. HindleHealth+ SHIPPING WEIGHT APPROXIMATELY 10lbs / 4.5kg.

REV. 1	DRN BY MS	CHK BY KB	APP BY KB	DATE 11/9/2022	DRN BY MS	DATE: 9/1/2022	HINDLEPOWER
DESCRIPTION				UPDATED NOTES	CHK BY MCR	DATE: 9/1/2022	
PROPRIETARY AND CONFIDENTIAL NOTICE ANY REPRODUCTION, PARTIAL OR AS A WHOLE OF THIS DOCUMENT WITHOUT THE WRITTEN PERMISSION OF HINDLE POWER, INC IS STRICTLY PROHIBITED.					APP BY KB	DATE: 9/1/2022	SCALE DWG No B 1:4 JE5260-00

NOTES:

1. ALL WIRING SHOULD CONFORM TO NEC, LOCAL, AND SITE REGULATIONS. ONLY USE COPPER (CU) CONDUCTORS.
2. COMPRESSION LUGS CAN BE ADJUSTED 90° FOR BOTTOM OR SIDE CABLE ENTRY, THEN BE LOCKED BACK IN PLACE TO PREVENT ROTATION.
3. SEE USER INSTRUCTIONS (p/n JA5136-00) FOR OTHER OPERATIONAL DETAILS.
4. WIRE PER FIELD INSTRUCTIONS (p/n JD5082-00).

COMPONENT LIST	
SYMBOL	DESCRIPTION
A1	HindleHealth+ CONTROL BOARD
BAT (-)	BATTERY INPUT TERMINAL
LOD (-)	DC LOAD OUTPUT TERMINAL
R1	50MV, 500A DC SHUNT
TB1	COMM CONNECTION
TB2	BATTERY (+) CONNECTION
TB3	EXTERNAL TEMPERATURE CONNECTION



FRONT VIEW

I/O TABLE		
I/O TERMINAL	DESCRIPTION - TYPE	CONNECTION
BAT (-)	INPUT TERMINAL - CU-AL COMPRESSION LUG	ONE (1) #6-350 MCM
LOD (-)	OUTPUT TERMINAL - CU-AL COMPRESSION LUG	ONE (1) #6-350 MCM
TB1	SOLDERLESS COMPRESSION SCREW	#26-14 AWG
TB2	SOLDERLESS COMPRESSION SCREW	#26-14 AWG
TB3	SOLDERLESS COMPRESSION SCREW	#26-14 AWG
GND	CHASSIS GROUND - 1/4"-20 ZPS STUD TERMINAL	1/4" RING LUG

REV. 1	DRN BY MS	CHK BY K/B	APP BY K/B	DATE 11/9/2022	DRN BY MS	DATE: 9/1/2022
DESCRIPTION				UPDATED NOTES	CHK BY MCR	DATE: 9/1/2022
PROPRIETARY AND CONFIDENTIAL NOTICE				ANY REPRODUCTION, PARTIAL OR AS A WHOLE OF THIS DOCUMENT WITHOUT THE WRITTEN PERMISSION OF HINDLE POWER, INC IS STRICTLY PROHIBITED.	APP BY K/B	DATE: 9/1/2022
UNLESS OTHERWISE SPECIFIED ALL DIMENSIONS FOLLOW THE ANSI SYSTEM IPS (INCHES-POUNDS & SECONDS) TOLERANCES ARE: FRAC. ±1/64, DEC. ±0.015, ANG ±.25°						



TITLE HindleHealth+
STYLE-5111 ASSEMBLY COMPONENT INTERNAL LAYOUT

B	SCALE 1:2	DWG No JE5260-00	REV 1	SHEET 2 OF 2
----------	-----------	-------------------------	-------	--------------